

VOLTAGES PRESENT IN THIS CONTROL CAN CAUSE SEVERE OR FATAL INJURIES.
NOTE: EVEN THOUGH SUPPLY POWER TO THIS UNIT HAS BEEN DISCONNECTED, THERE MAY BE VOLTAGES IN THIS CONTROL ORIGINATING FROM OTHER SOURCES.
FOR ALL VOLTAGE POTENTIAL TO BE REMOVED FROM THIS CONTROL, POWER MUST BE REMOVED FROM ALL EXTERNAL CONTROL CIRCUITS CONNECTED TO TERMINALS IN THIS CABINET.

CAUTION
Control Shipped Wired for 460 VAC
Unless otherwise specified - See Note 2

CAUTION
DO NOT OPERATE WITHOUT WATER FLOW
POWER ON WITHOUT WATER FLOW MAY CAUSE DAMAGE TO CONTROL.
TURN POWER OFF WHEN CONTROL IS NOT IN USE.

QTY	DESIG.	PART NO.	DESCRIPTION
1	PCB1	600528	ASSEM. DIAL PLATE, EN1000, CONSISTING OF: ASSEM. DIAL PLATE, EN1000 W/RY SW/CH, CONTROL SW/CH ASSEM., SEQUENCE CONTR. & DISPLAY BD.
1	PCB2	600531-001	SWITCH ASSEM., KEY LOCK, MOMENTARY, SEPT ILLUSTRATED PANEL, DIAL PLATE, EN1000
1	J2-J3	305001	HARNESS ASSEM., CTR. L.B.D. TO TERM. BD.
1	J3	305002	Harness Assem., Power, EN1000-FPX(SCR)
1	PWR. LT.	305001	Lamp, Neon, Red, 130V
1	WELD. LT.	305002	Lamp, Neon, Clear, 230V

QTY	DESIG.	PART NO.	DESCRIPTION
1	T51	335034	Terminal Strip, 10 Pin, (Part of J3 HARNESS)
1	T1	310001	Transformer, Control, (Part of J3 HARNESS)
1	T2	310002	Transformer, Sona, (Part of J3 HARNESS)
2	R70,71	225016	Resistor, Power, Surge, 500 OHM, 100W
1	F1	308010	Fuseholder, SINGLE POLE, 600V
1	F1	307018	Fuse, Control, 6/10A, BBS 6/10.
3	F4,7,8(PCB2)	307022	FUSE, 1 AMP, SLOW BLOW, 2AG (PART OF 410319-001)
1	(R70,71)	325024	Wire Assm., Surge Resistor, 10 Oh., Black
1	PCB2	410319-001	PCB ASSEM., TERMINAL STRIP BD., EN1000
1	PCB5	410326	PCB Assem., RS232 Driver Board
1	J4-J4	322448	Harness Assem., Seq. Ctrl. Bd. to RS232 Driver Bd., 24' LG.
1	J232-J232	322369-008	Harness Assem., RS232 to J232 Customer Connection, 29' LG.
1	(PCB5)	525035	BRACKET, MOUNTING, RS232 DRIVER BOARD
1		510245	Assem., Flat Plate, 11" x 11", EN1000-FPX(SCR)/232
1		700105	Manual, EN1000
1		421183	Logic Diagram, EN1000-Series Control
1		421210-022	Wiring Diagram, EN1000-FPX(SCR)/232, 11 x 11 Flat Plate

Optional Keylock when specified by customer. See Note 8. Pack Key in Poly bag 900148 & attach to inside of Dial Plate w/ Yellow Tape 900118. See Drawing #440450-001 for mounting detail of Flat Plate (FP).

Use one (1) Poly Bag P/N 900148 to Flat Plate using Tape P/N 900118, & include the following in the bag:

- 4 Each #6-32 x 1/4" PHMS, Phil., Black P/N 557004
- 4 Each #6-32 x 1/4" A/F Hex Nut P/N 557005
- 4 Each #6-32 x 1/2" Standoffs P/N 555031
- 4 Each #6-32 x 1/4" PHMS, Phil., Brite P/N 557003
- 1 Each Label, Danger, Hazardous Voltage... P/N 460142/RWA156103C
- 1 Each Label, Voltage and Flash Hazard... P/N 460143/RWA156103A
- 1 Each Label, Caution, Do Not Pinch Wires... P/N 460144/RWA156103D
- 1 Each Label, Caution, Water Hose Burst Hazard... P/N 460145/RWA156103E
- 1 Each Label, Warning, Hazardous Voltage... P/N 460146/RWA156103F
- 1 Each Label, Caution, Do Not Pinch Wires... P/N 460170
- 1 Each Resistor, Power, 2000 Ohm, 10W, (For 575 VAC) P/N 600048
- 1 Each Resistor, Power, 10W, (For 380 VAC) P/N 325225
- 1 Each Jumper, T51, (For 380 VAC)

When Control is wired for either 230/460/575 VAC operation, add quantity one (1) T51 Label P/N 460201 for 380 VAC operation, and quantity one (1) T51 Label P/N 460105 for 230/460/575 VAC operation.

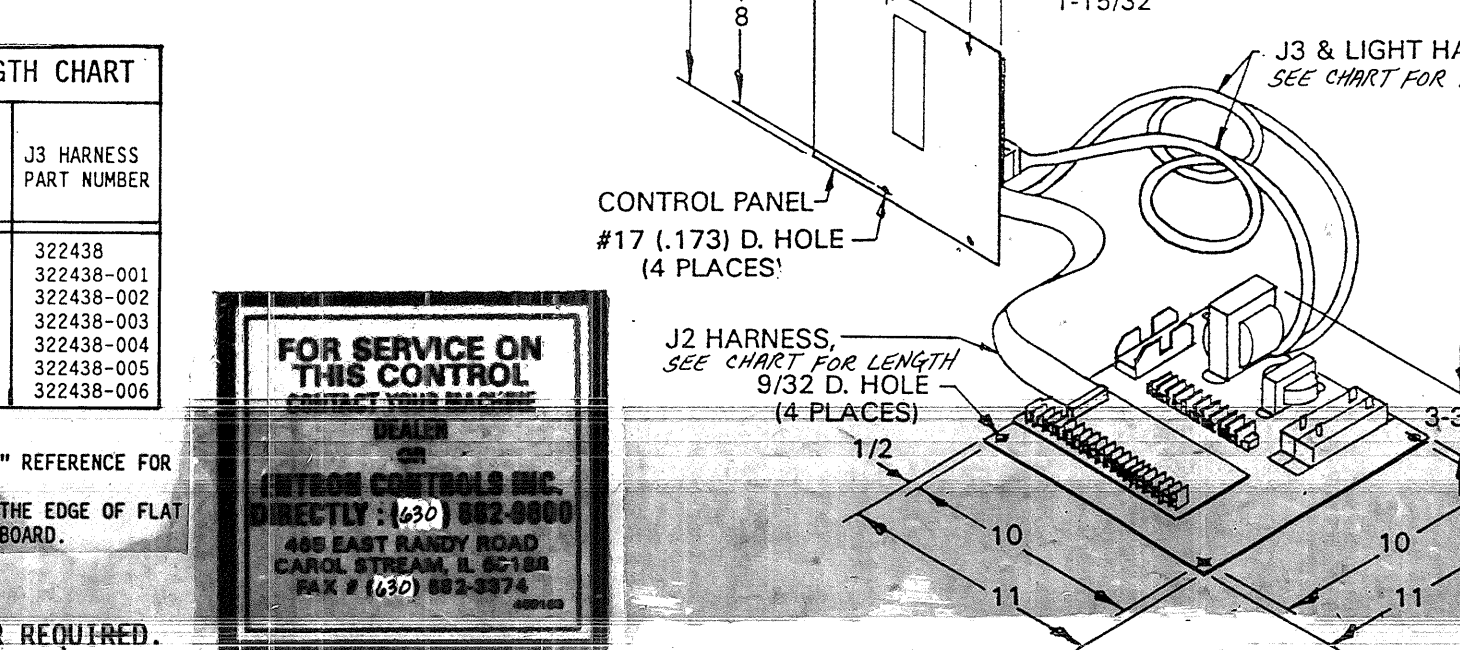
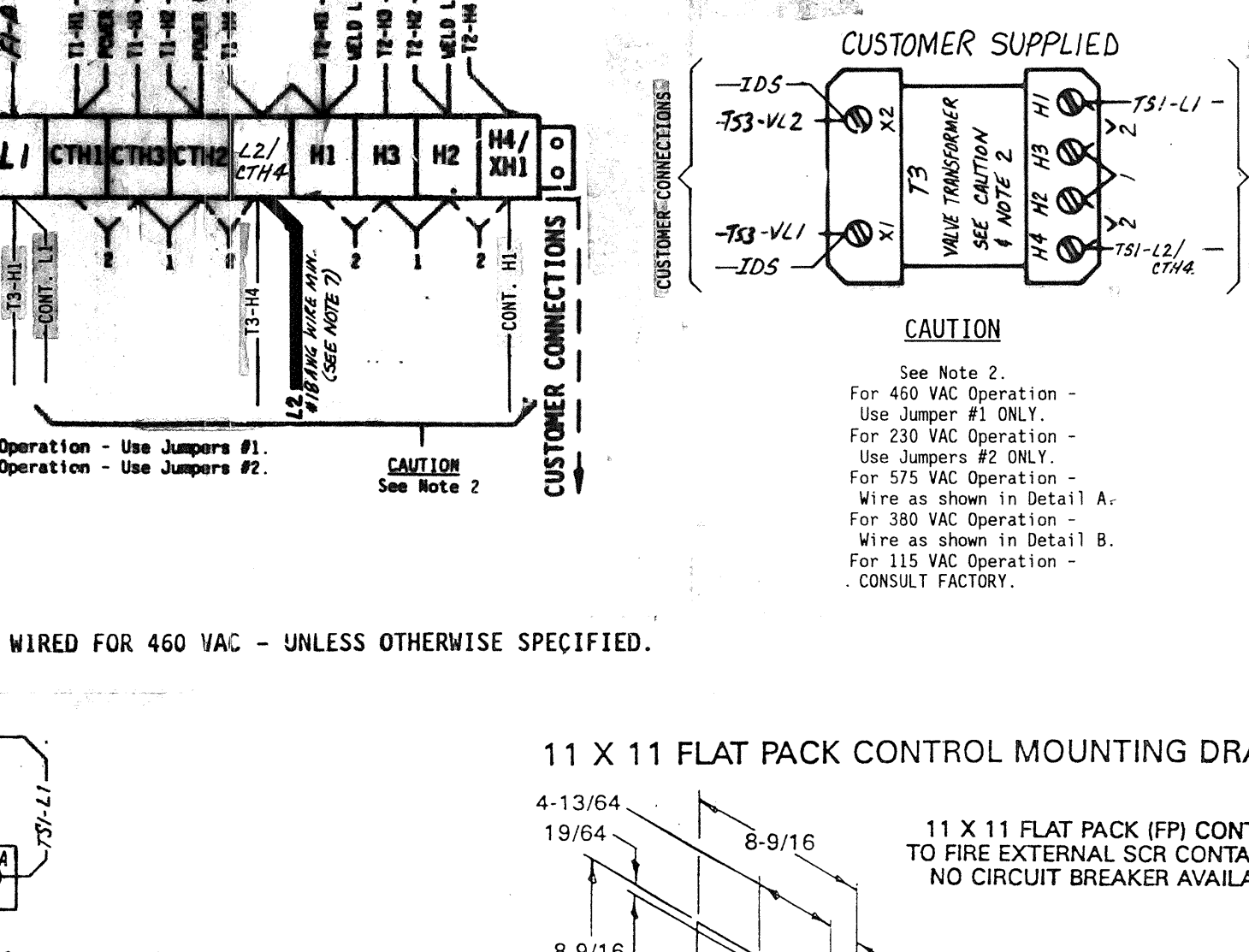
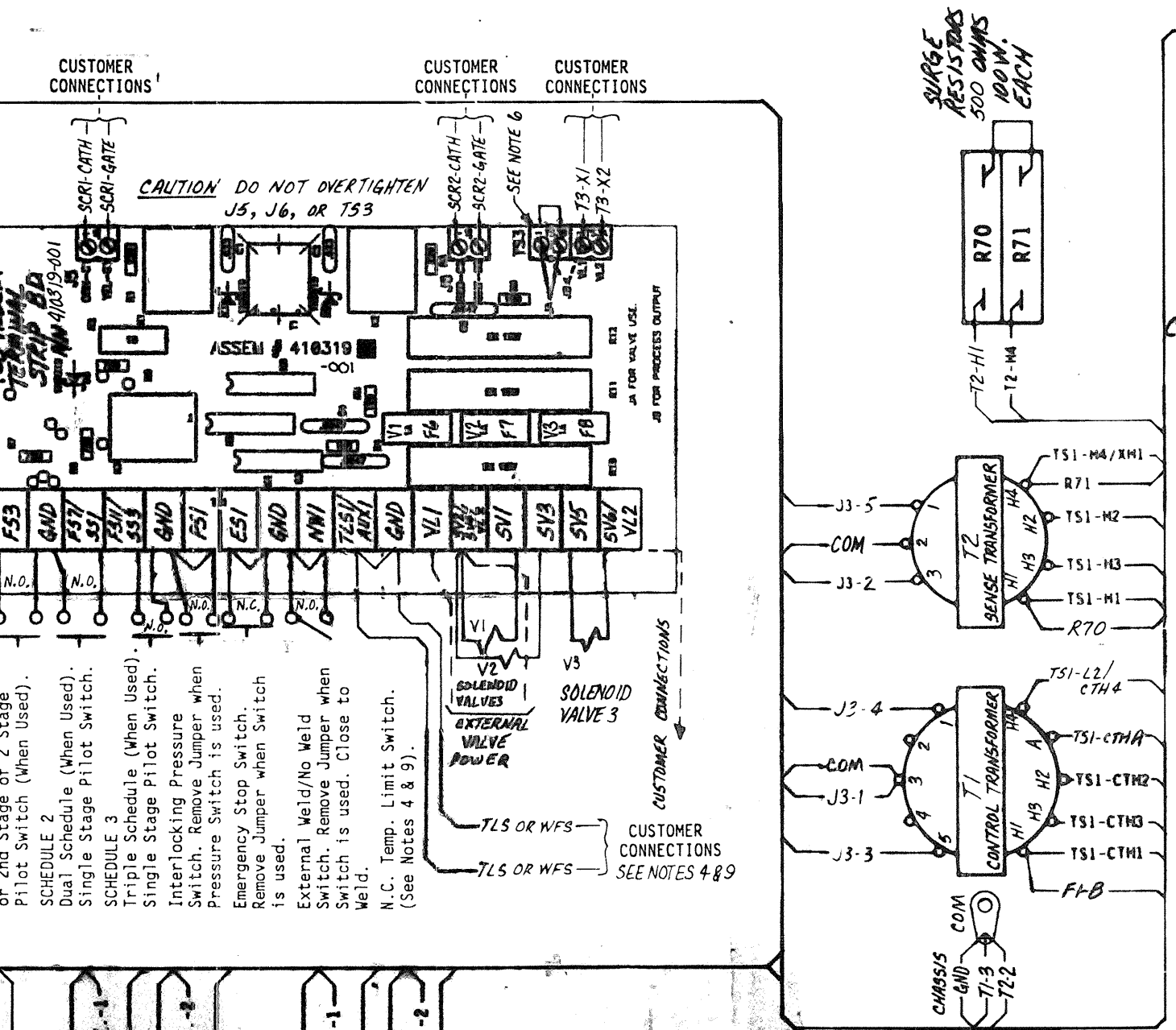
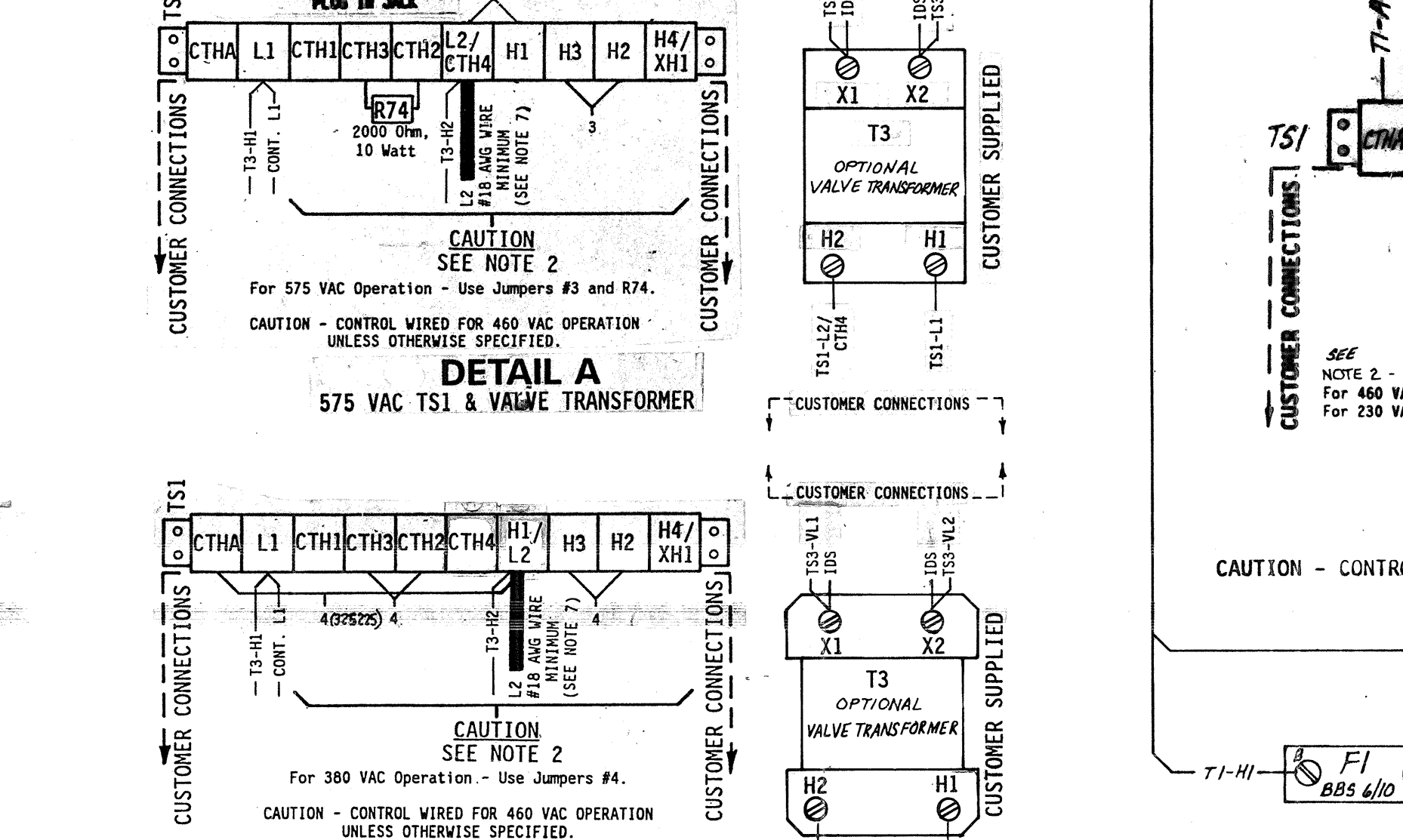
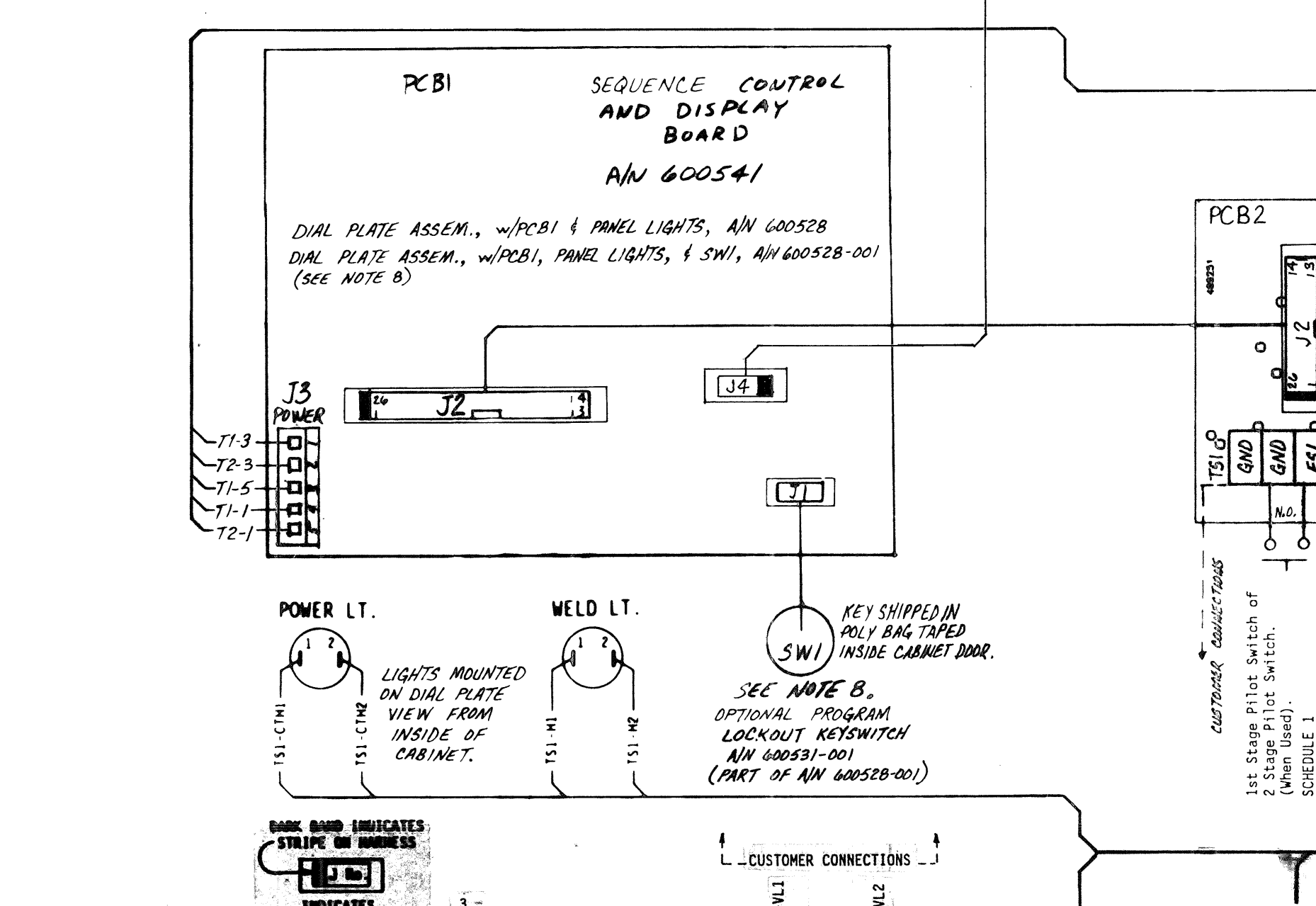
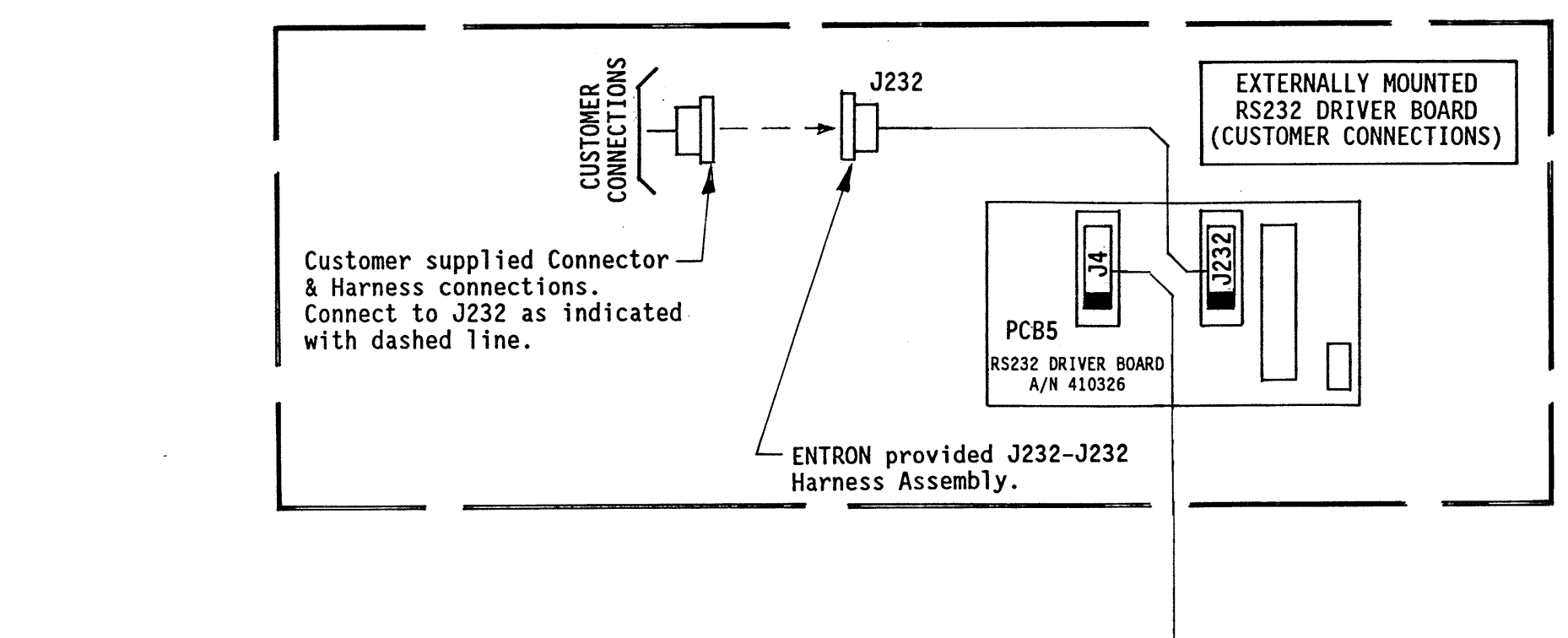
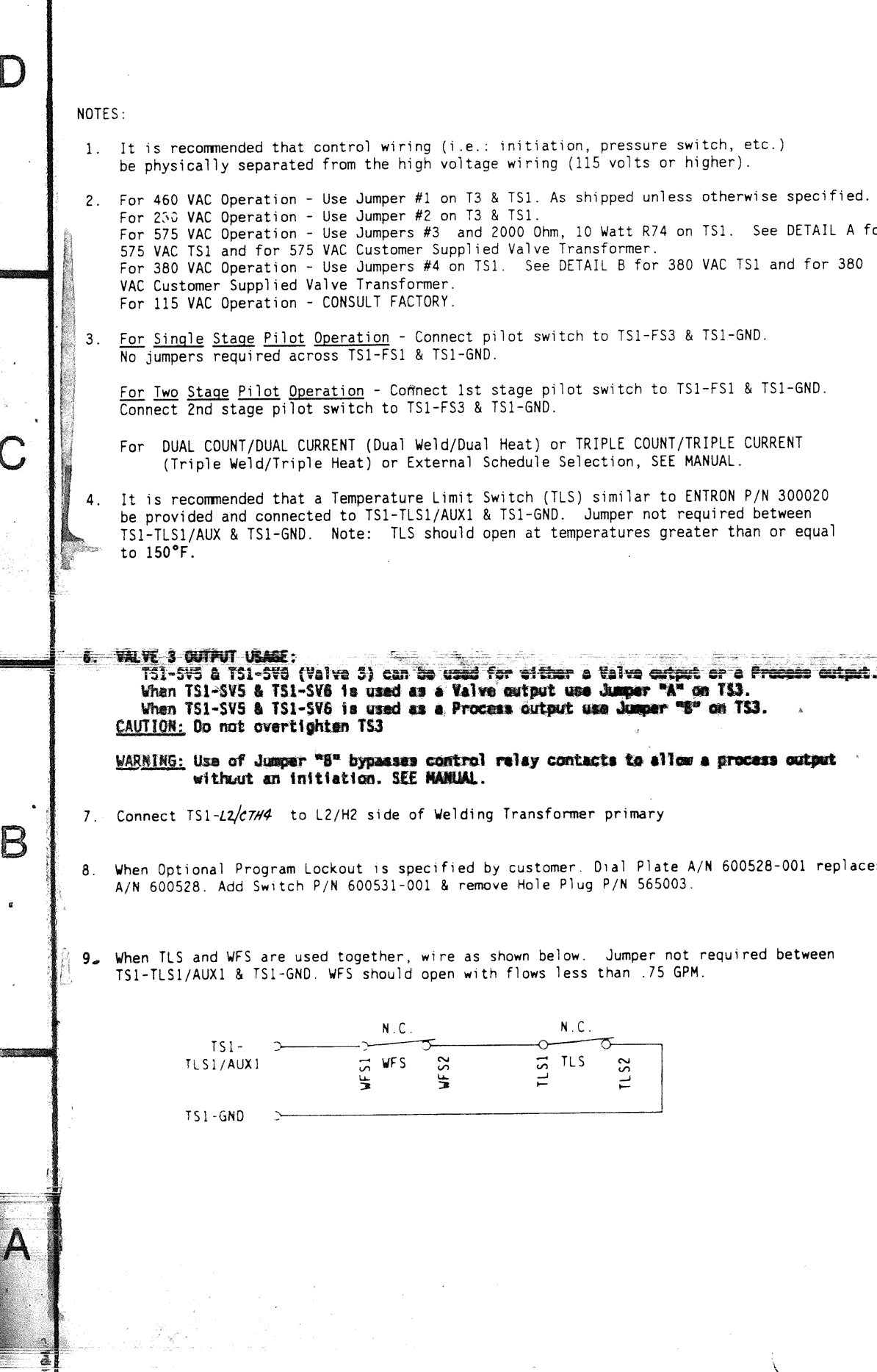
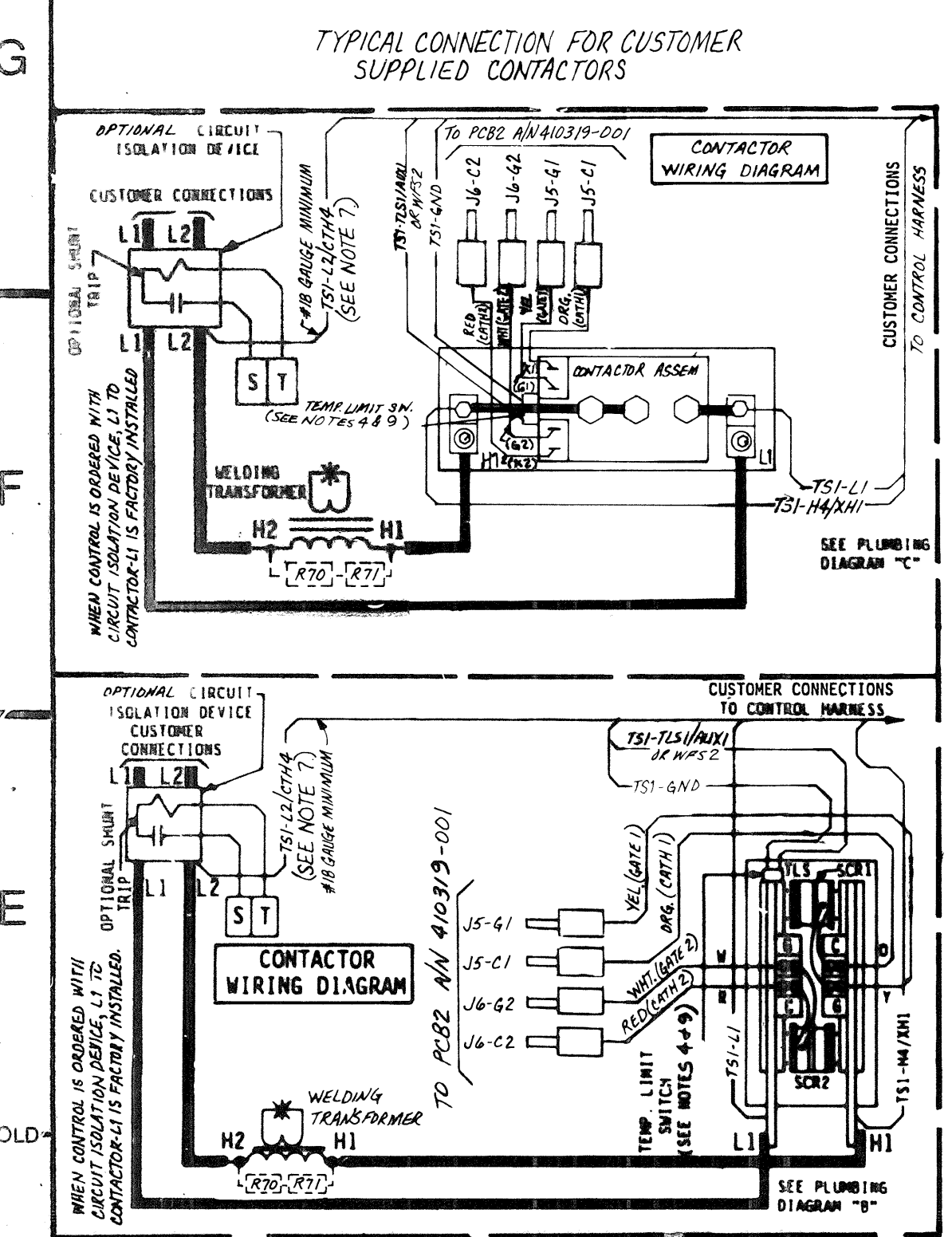
MANUFACTURING INSTRUCTIONS:
See Drawing #600526 for Layout/Assembly of Front Panel.
See Drawing #600554 for Mechanical Assembly Instructions.
See Drawing #440454 for Packing Instructions.

REV	AUTH	DESCRIPTION	DATE
1	JE	12-9-98	DEC

SCALE: DATE: DRAWN BY: CHK'D BY: APPROVED BY:

ENTHON CONTROLS INC.

WIRING DIAGRAM, EN1000-FPX(SCR)/232, 11 x 11 FLAT PLATE W/RED FOR SELECTABLE 230/380/460/575 VAC OPERATION. (For FPX Designation, See Chart)



J2-J2 HARNESS & J3 HARNESS LENGTH CHART

FPX FLAT PLATE DESIGNATION FOR J2-J2 & J3 HARNESS LENGTHS	J2-J2 & J3 HARNESS LENGTHS	J2-J2 HARNESS PART NUMBER	J3 HARNESS PART NUMBER
FP3	3 FEET LONG	322437	322438
FP4	4 FEET LONG	322437-001	322438-001
FP5	5 FEET LONG	322437-002	322438-002
FP6	6 FEET LONG	322437-003	322438-003
FP7	7 FEET LONG	322437-004	322438-004
FP8	8 FEET LONG	322437-005	322438-005
FP9	9 FEET LONG	322437-006	322438-006

X = NUMBER DESIGNATIONS 3 THRU 9 OF THE "FPX" REFERENCE FOR J2-J2 & J3 HARNESS LENGTHS.
NOTE: HARNESS LENGTHS ARE MEASURED FROM THE EDGE OF FLAT PLATE TO SEQUENCE CONTROL DISPLAY BOARD.