

CAUTION - READ MANUAL & ALL NOTES BEFORE INSTALLING OR OPERATING CONTROL. SEE NOTE 1

WARNING: HIGH VOLTAGE

VOLTAGES PRESENT IN THIS CONTROL CAN CAUSE SEVERE OR FATAL INJURIES.
NOTE: EVEN THOUGH SUPPLY POWER TO THIS UNIT HAS BEEN DISCONNECTED, THERE MAY BE VOLTAGES IN THIS CONTROL ORIGINATING FROM OTHER SOURCES.

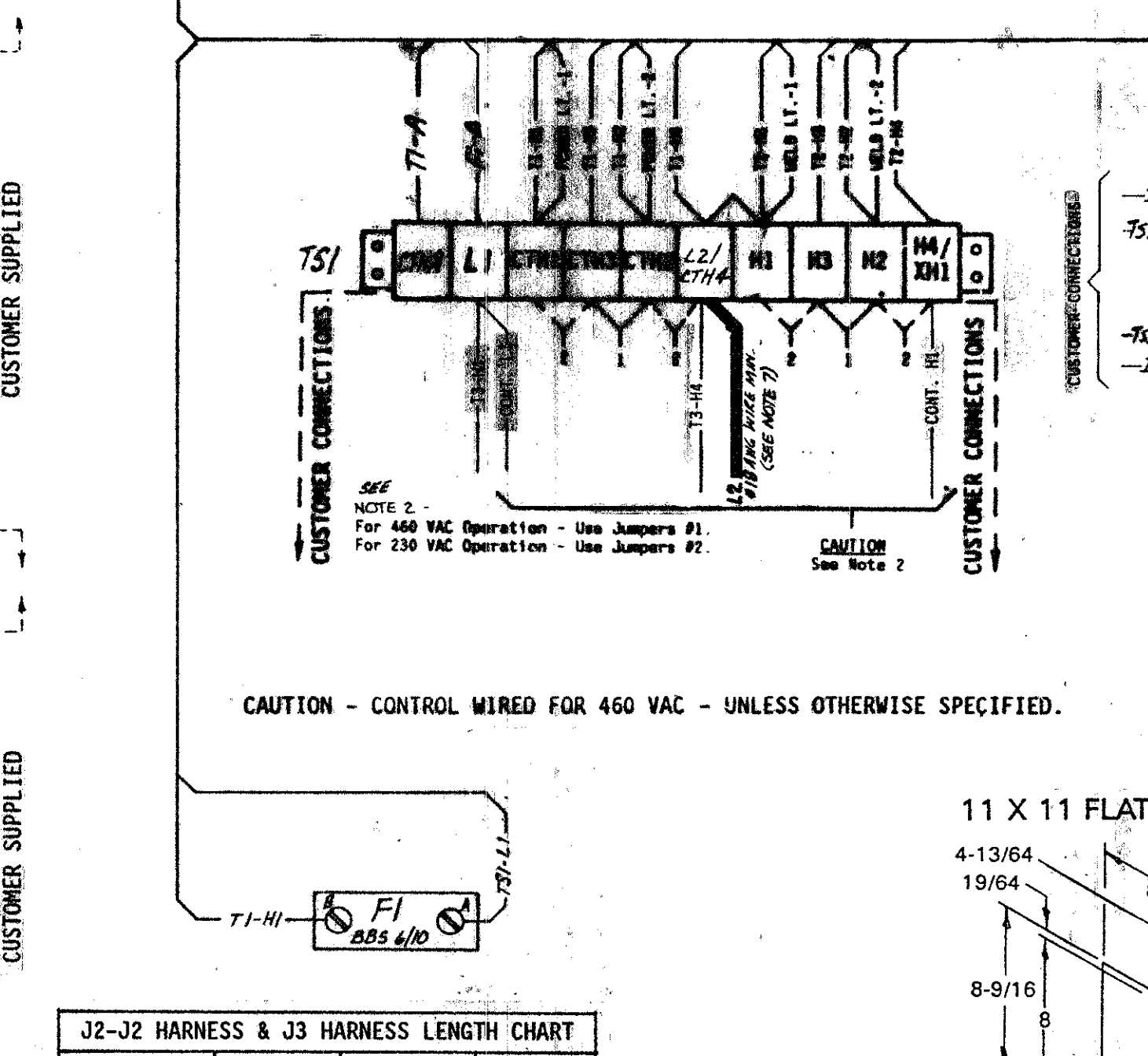
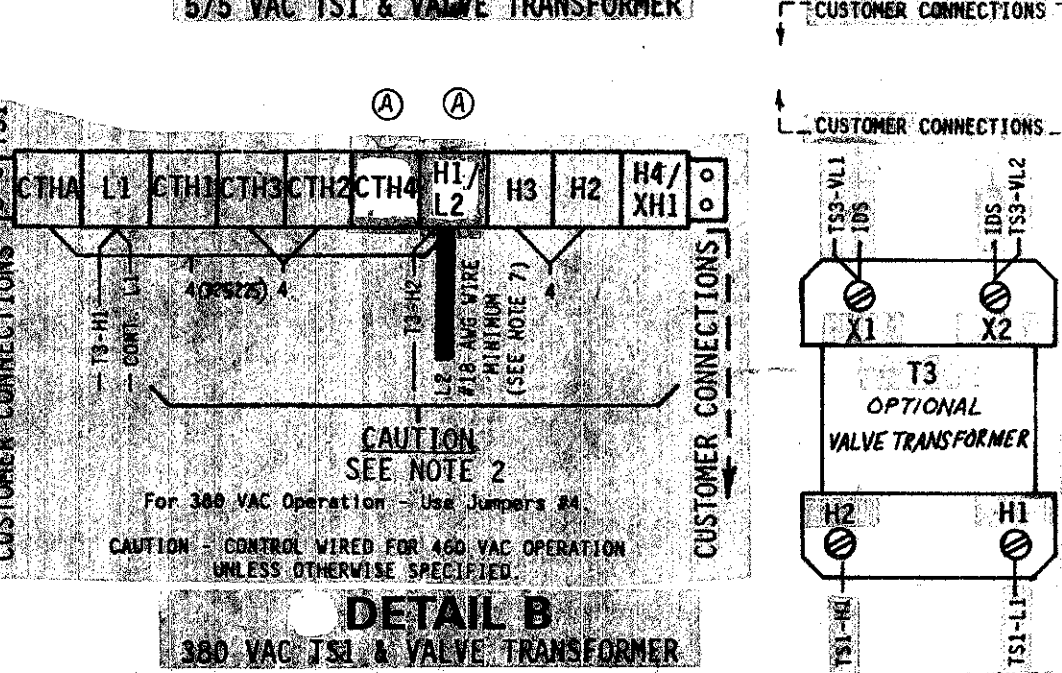
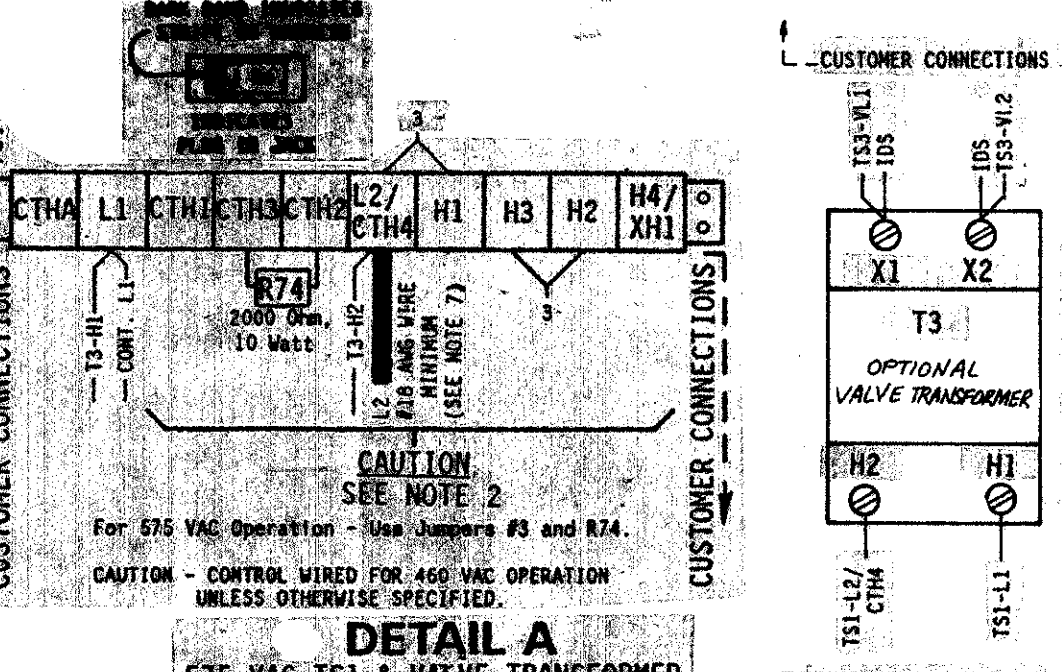
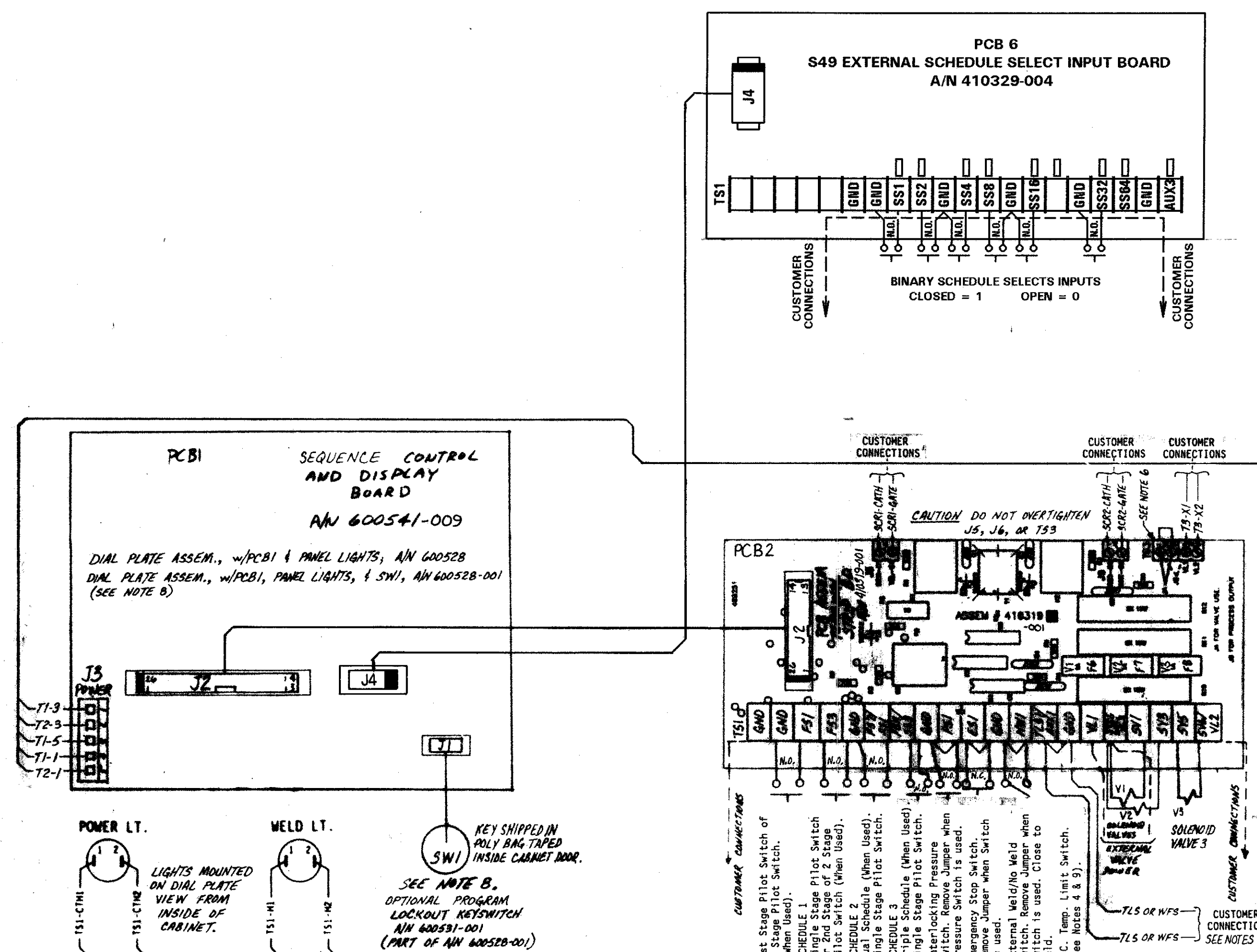
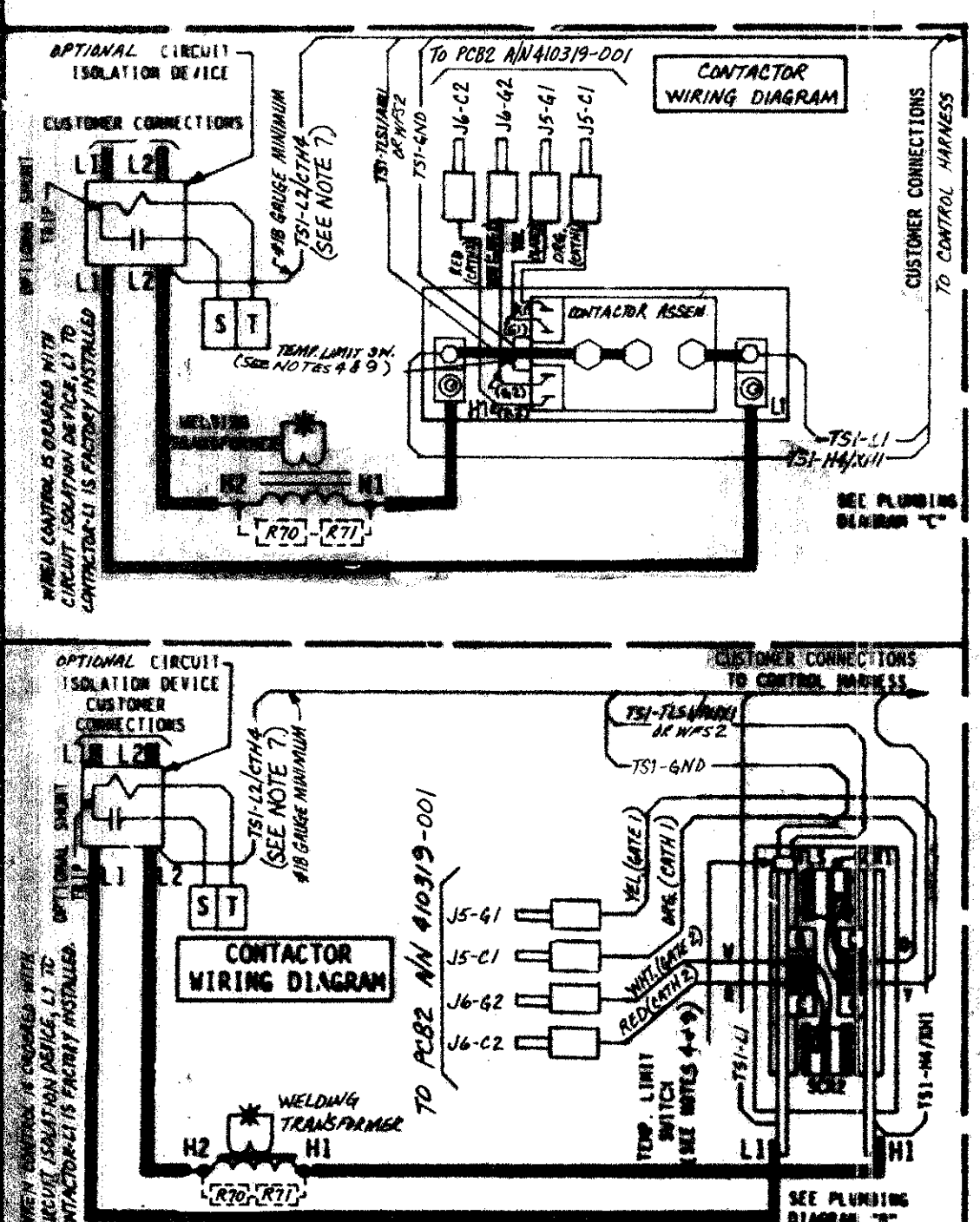
FOR ALL VOLTAGE POTENTIAL TO BE REMOVED FROM THIS CONTROL, POWER MUST BE REMOVED FROM ALL EXTERNAL CONTROL CIRCUITS CONNECTED TO TERMINALS IN THIS CABINET.

CAUTION
Control Shipped Wired for 460 VAC
Unless otherwise specified - See Note 2

CAUTION
DO NOT OPERATE WITHOUT WATER ON
POWER ON WITHOUT WATER FLOW MAY CAUSE DAMAGE TO CONTROL.
TURN POWER OFF WHEN CONTROL IS NOT IN USE.

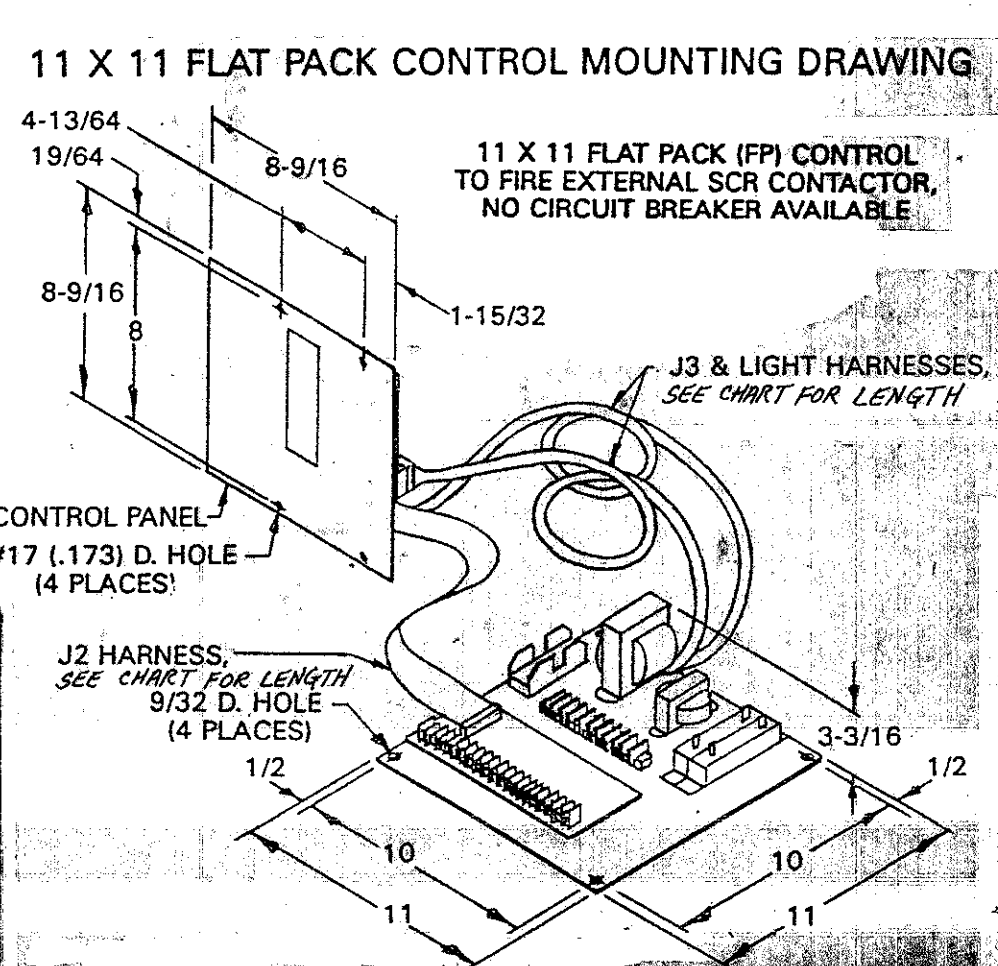
QTY	DESIG	PART NO.	DESCRIPTION
1	J2-J2	SEE CHART	HARNESS ASSEM, CABLED
1	J3	SEE CHART	HARNESS ASSEM, Pump; EN1000-FPX(SCR)
1	J4-J4	322442	HARNESS ASSEM, CTRL. BD.
1	PWR. LT.	300001	Light, Power, Ctrl. Bd.
1	M.D. LT.	300002	Light, Main Display, EN1000

TYPICAL CONNECTION FOR CUSTOMER SUPPLIED CONTACTORS



FPX FLAT PLATE DESIGNATION	J2-J2 & J3 HARNESS LENGTHS	J2-J2 HARNESS PART NUMBER	J3 HARNESS PART NUMBER
FP3	3 FEET LONG	322437	322436
FP4	4 FEET LONG	322437-001	322436-001
FP5	5 FEET LONG	322437-002	322436-002
FP6	6 FEET LONG	322437-003	322436-003
FP7	7 FEET LONG	322437-004	322436-004
FP8	8 FEET LONG	322437-005	322436-005
FP9	9 FEET LONG	322437-006	322436-006
FP10	10 FEET LONG	322437-007	322436-007

ENTRON CONTROLS INC.
380 EAST BROADWAY
CAROL STREAM, IL 60814
TEL: (708) 482-3074



REV	AUTH	DESCRIPTION	DRWN BY	CHK'D BY
1				

REV	AUTH	DESCRIPTION	DRWN BY	CHK'D BY
1				

ENTRON

SCALE: DATE: DRAWN BY: CHK'D BY: APPROVED BY:

TOLERANCE UNLESS SPECIFIED: ANGLES: ± 1/2°; DECIMALS: ± .010; FRACTIONS: ± 1/64

WIRING DIAGRAM, EN1000-FPX(SCR)/S49, 11 X 11 FLAT PLATE, WIRED FOR SELECTABLE 230/380/460/575 VAC OPERATION (FOR FPX DESIGNATION, SEE CHART)

NEXT ASSM/USED ON: DRAWING NUMBER: REV: 421210-030

- NOTES:
- It is recommended that control wiring (i.e., initiation, pressure switch, etc.) be physically separated from the high voltage wiring (115 volts or higher).
 - For 460 VAC Operation - Use Jumper #1 on T3 & T51. As shipped unless otherwise specified. For 230 VAC Operation - Use Jumper #2 on T3 & T51. For 575 VAC Operation - Use Jumpers #3 and 2000 Ohm, 10 Watt R74 on T51. See DETAIL A for 575 VAC T51 and for 575 VAC Customer Supplied Valve Transformer. For 380 VAC Operation - Use Jumpers #4 on T51. See DETAIL B for 380 VAC T51 and for 380 VAC Customer Supplied Valve Transformer. For 115 VAC Operation - CONSULT FACTORY.
 - For Single Stage Pilot Operation - Connect pilot switch to T51-F53 & T51-GND. No jumpers required across T51-F51 & T51-GND.
 - For Two Stage Pilot Operation - Connect 1st stage pilot switch to T51-F51 & T51-GND. Connect 2nd stage pilot switch to T51-F53 & T51-GND.
 - For DUAL COUNT/DUAL CURRENT (Dual Weld/Dual Heat) or TRIPLE COUNT/TRIPLE CURRENT (Triple Weld/Triple Heat) or External Schedule Selection, SEE MANUAL.
 - It is recommended that a Temperature Limit Switch (TLS) similar to ENTRON P/N 330020 be provided and connected to T51-TLS1/AUX1 & T51-GND. Jumper not required between T51-TLS1/AUX & T51-GND. Note: TLS should open at temperatures greater than or equal to 150°F.
 - Connect T51-L2/CTH4 to L2/H2 side of Welding Transformer primary.
 - When Optional Program Lockout is specified by customer, Dial Plate A/N 600528-001 replaces A/N 600528. Add Switch P/N 600531-001 & remove Hole Plug P/N 565003.
 - When TLS and WFS are used together, wire as shown below. Jumper not required between T51-TLS1/AUX1 & T51-GND. WFS should open with flows less than .75 GPM.
 - After October, 1997, this Wiring Diagram #421210-017 for EN1000-FPX(SCR), 11 x 11 Flat Plate Control, replaces Wiring Diagram #421210-007 for EN1000-FPX(SCR), 11 x 11 Flat Plate Control. See chart for "FPX" designation.
 - For SP1000-FPX(SCR), 11 x 11 Flat Plate Control, See Wiring Diagram #421210-001.

MANUFACTURING INSTRUCTIONS:
See Drawing #600526 for Layout/Assembly of Front Panel.
See Drawing #600554 for Mechanical Assembly Instructions.
See Drawing #440454 for Packing Instructions.

421210-030