

CAUTION - READ MANUAL & ALL NOTES BEFORE INSTALLING OR OPERATING CONTROL. SEE NOTE 1.

WARNING: HIGH VOLTAGE

VOLTAGES PRESENT IN THIS CONTROL CAN CAUSE SEVERE OR FATAL INJURIES. NOTE: EVEN THOUGH SUPPLY POWER TO THIS UNIT HAS BEEN DISCONNECTED, THERE MAY BE VOLTAGES IN THIS CONTROL ORIGINATING FROM OTHER SOURCES. FOR ALL VOLTAGE POTENTIAL TO BE REMOVED FROM THIS CONTROL, POWER MUST BE REMOVED FROM ALL EXTERNAL CONTROL CIRCUITS CONNECTED TO TERMINALS IN THIS CABINET.

CAUTION Control Shipped Wired for 380 VAC. Unless otherwise specified - See Note 2.

CAUTION DO NOT OPERATE WITHOUT WATER ON POWER ON WITHOUT WATER FLOW MAY CAUSE DAMAGE TO CONTROL. TURN POWER OFF WHEN CONTROL IS NOT IN USE.

PARTS LIST - CONTROL SECTION 421268-001 E

Table with columns: QTY, DESIG, PART NO, DESCRIPTION. Lists various components like Dial Plate, Transformer, Lamp, and Harness.

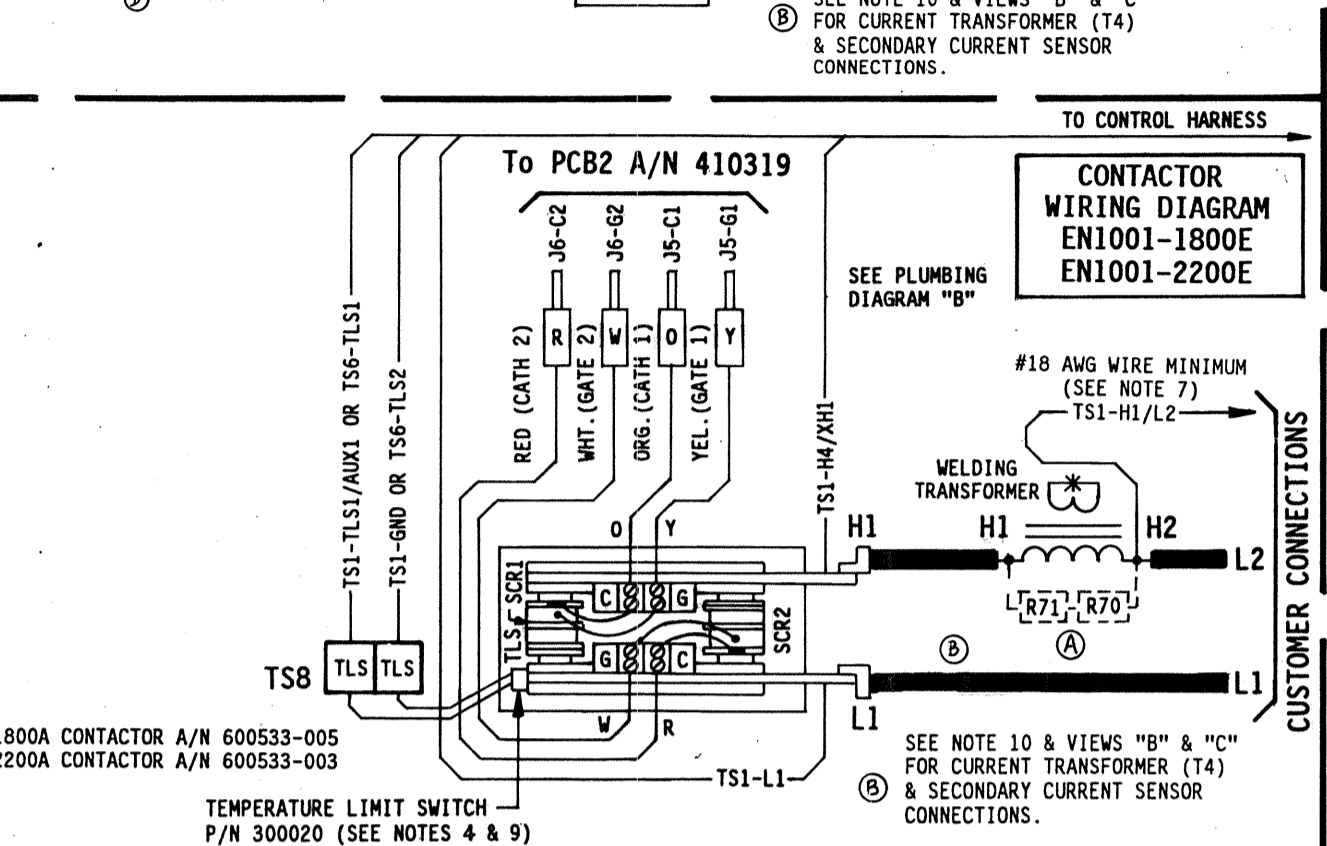
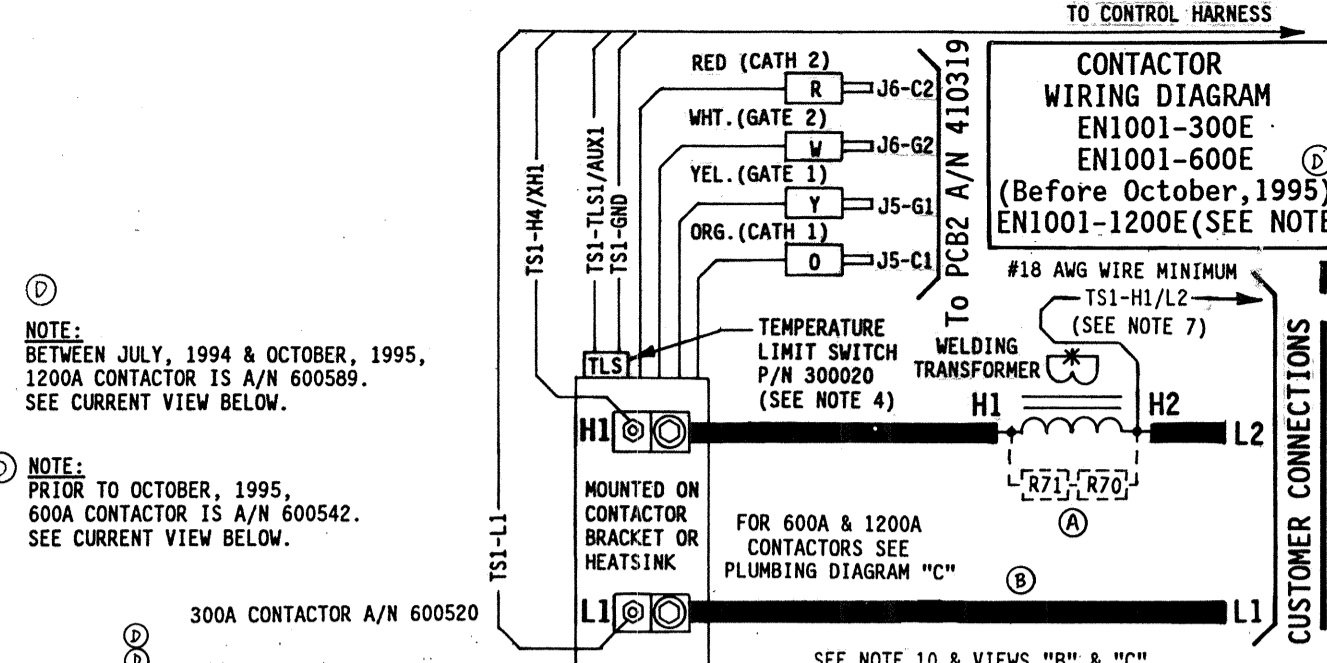
PARTS LIST - CONTACTOR SECTION

Table with columns: QTY, DESIG, PART NO, DESCRIPTION. Lists various contactor components like Terminal Strip, Resistor, Transformer, Fuse, and Solenoid.

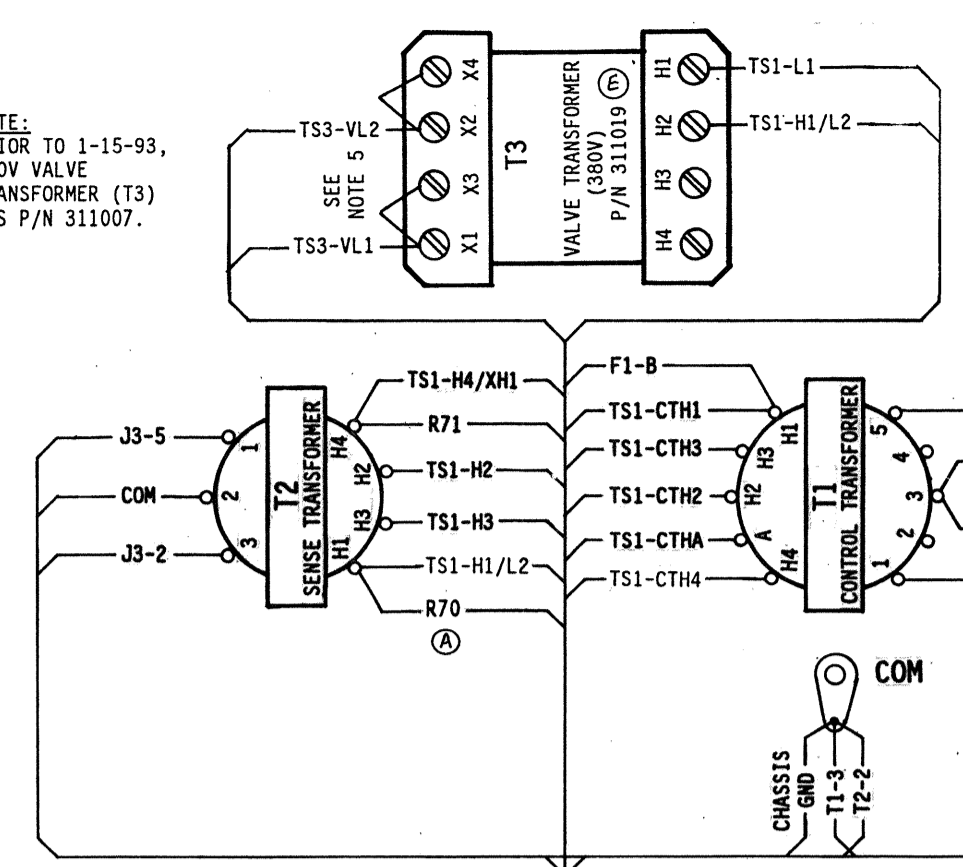
Optional Keypad when specified by customer. See Note 8. Pack Key in Poly bag 900148 & attach to Door w/Yellow Tape 900118. Optional when specified by customer. See Notes 4 & 9. Optional Water Flow Switch Assembly. An additional inches (") of hose, P/N 900045 and two (2) hose clamps, P/N 566010, are to be supplied. See Note 9. See Drawing #440449 for Customer Mounting & Knockout Detail "E" Cabinet.

MANUFACTURING INSTRUCTIONS: See Drawing #440445 for Packing Instructions "E" Cabinet. See Drawing #440446 for Label Locations "E" Cabinet. See Drawing #600550, #600550-01, #600550-02, or #600550-03 FOR MECHANICAL ASSEMBLY INSTRUCTIONS. See Drawing #440457 for Current Transformer Assembly. See Drawing #440458 for Secondary Current Sensor Assembly.

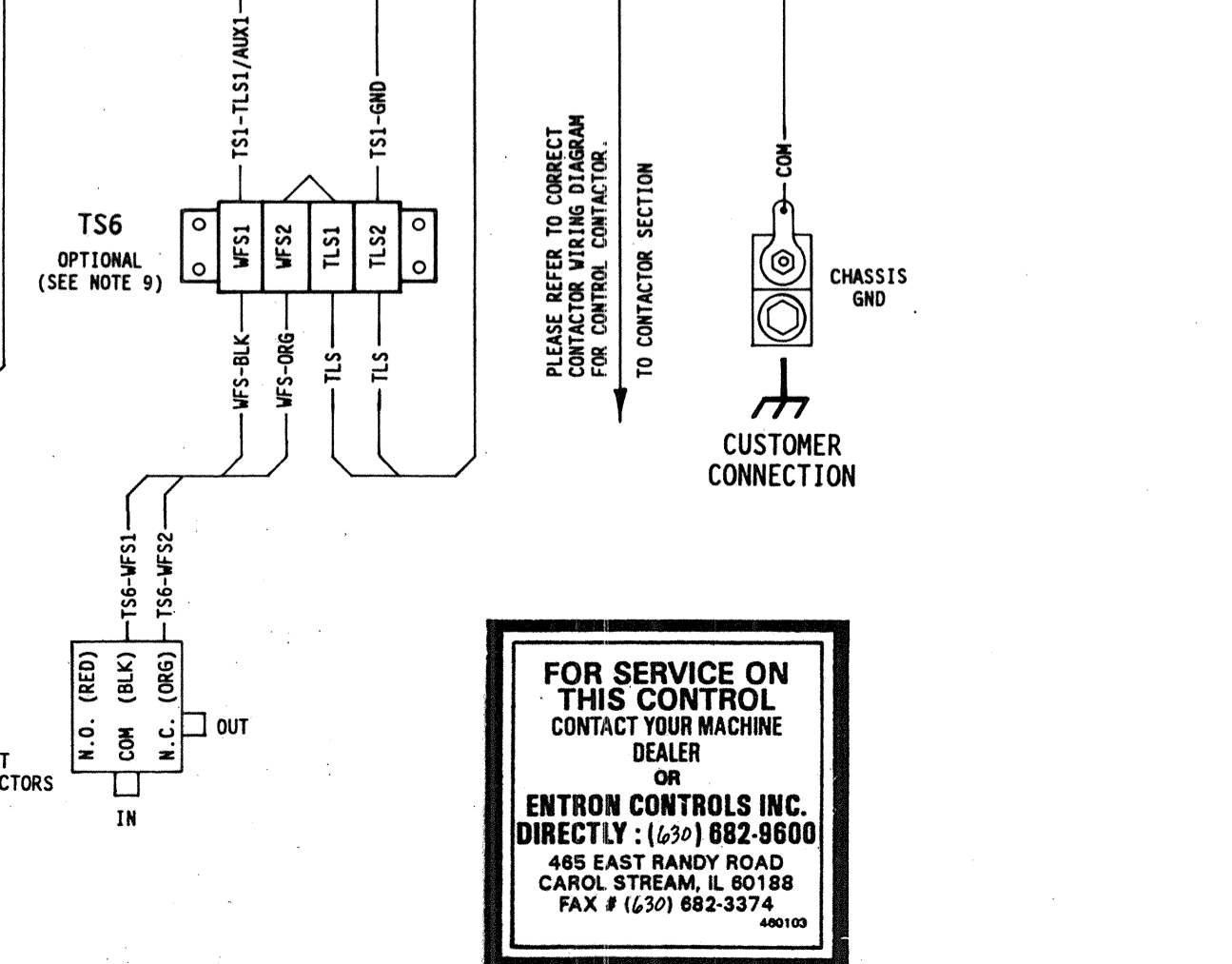
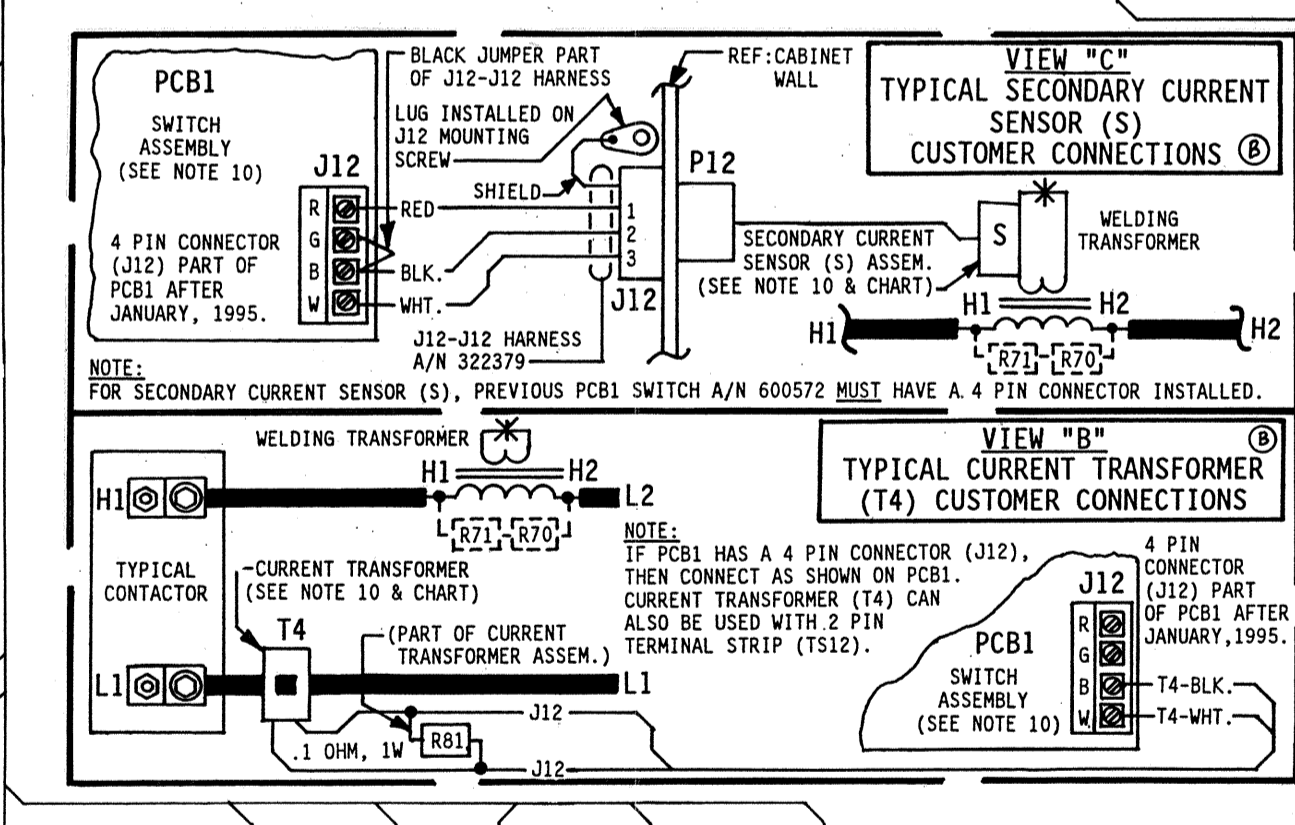
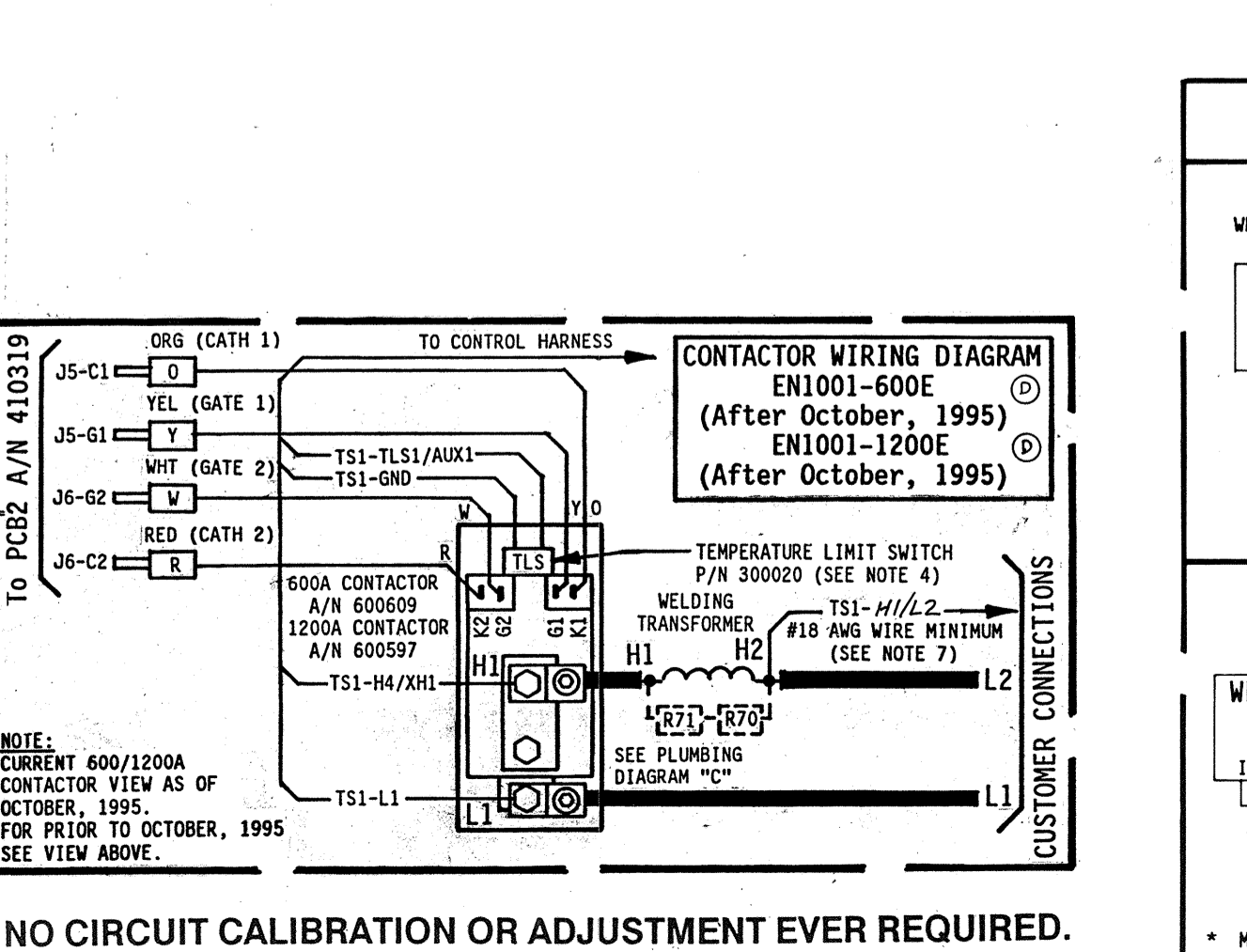
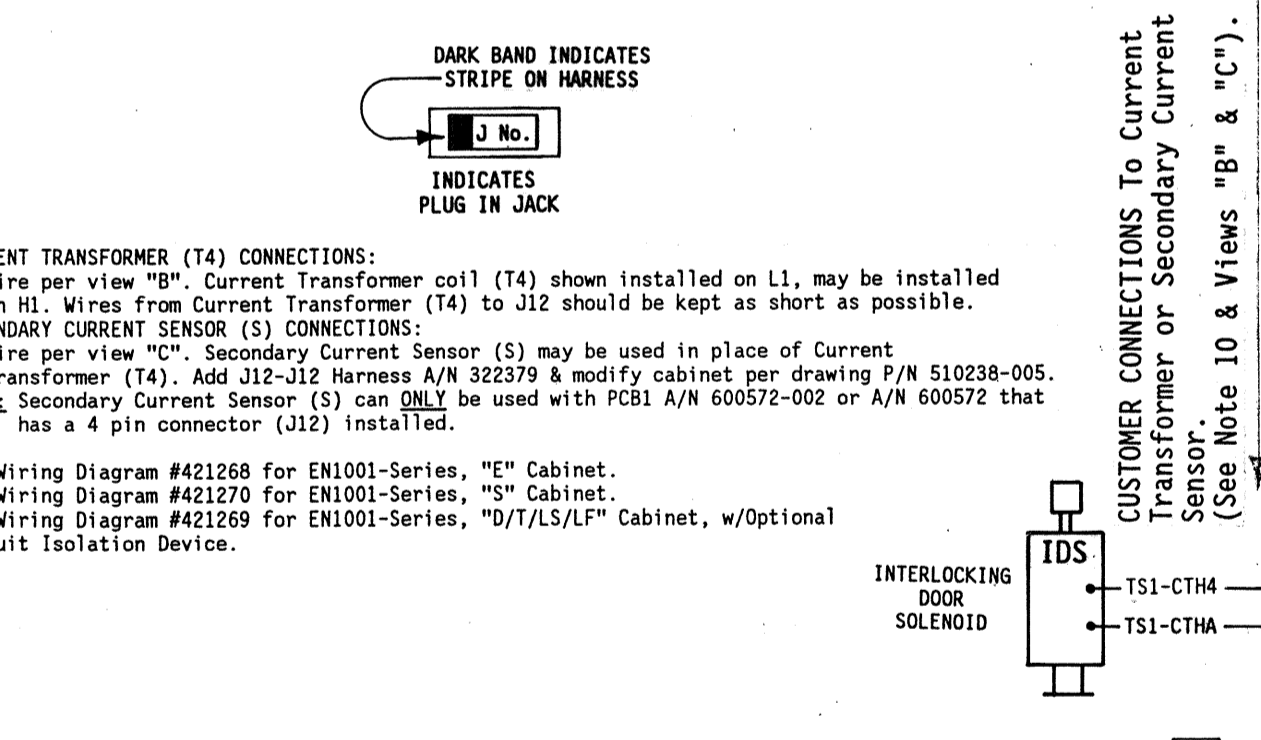
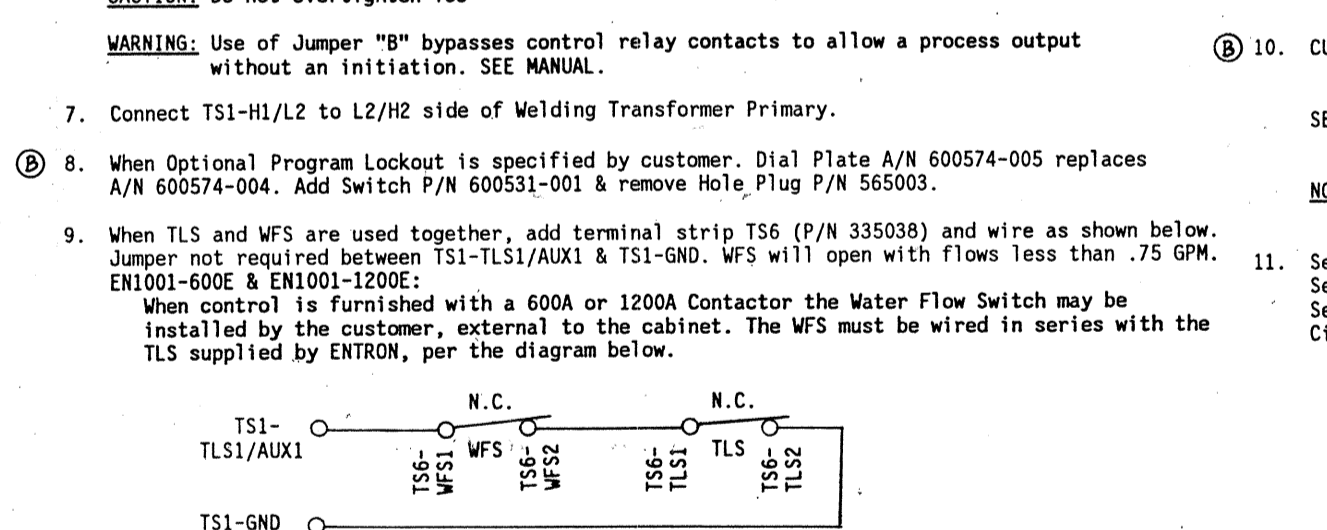
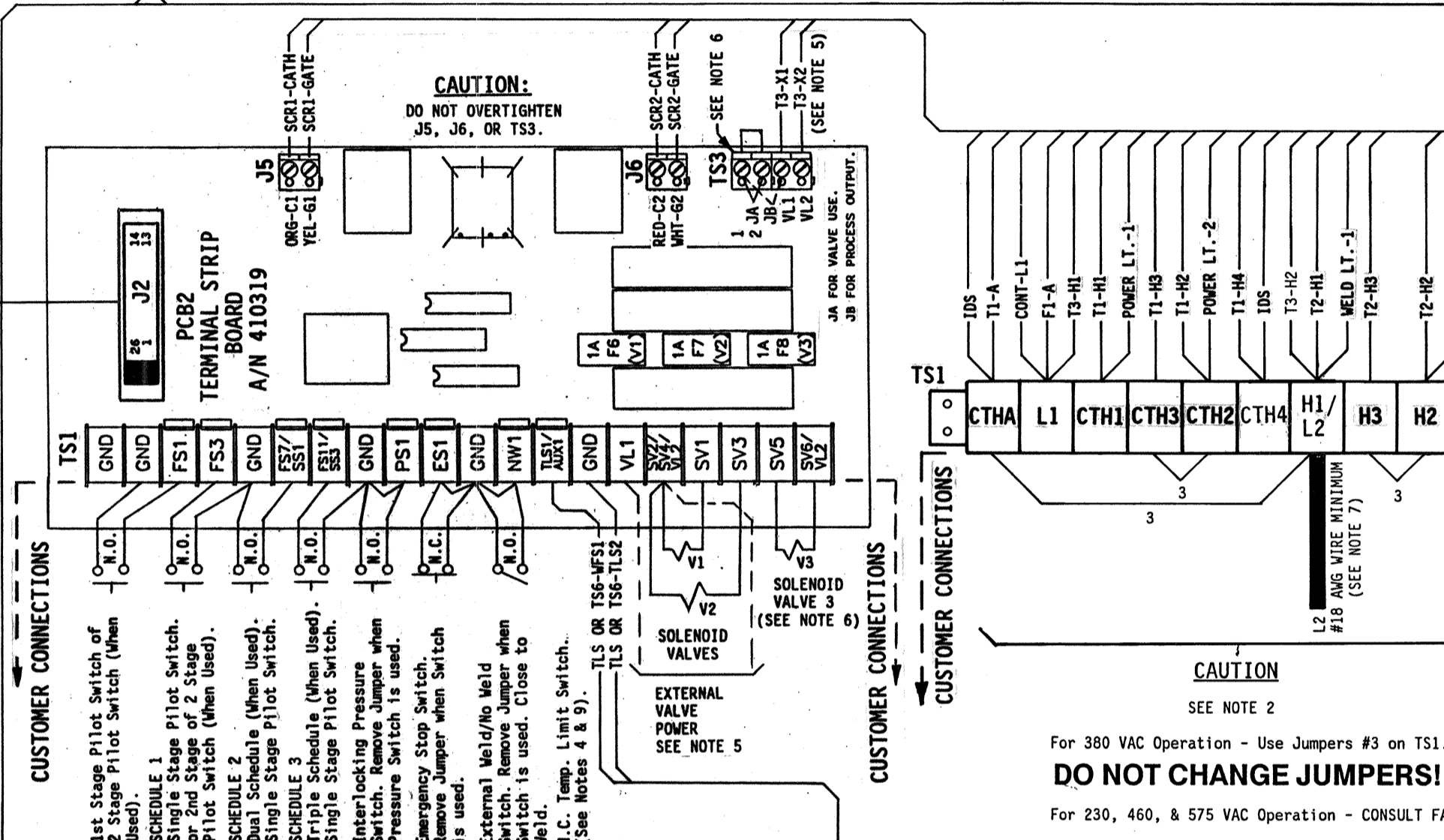
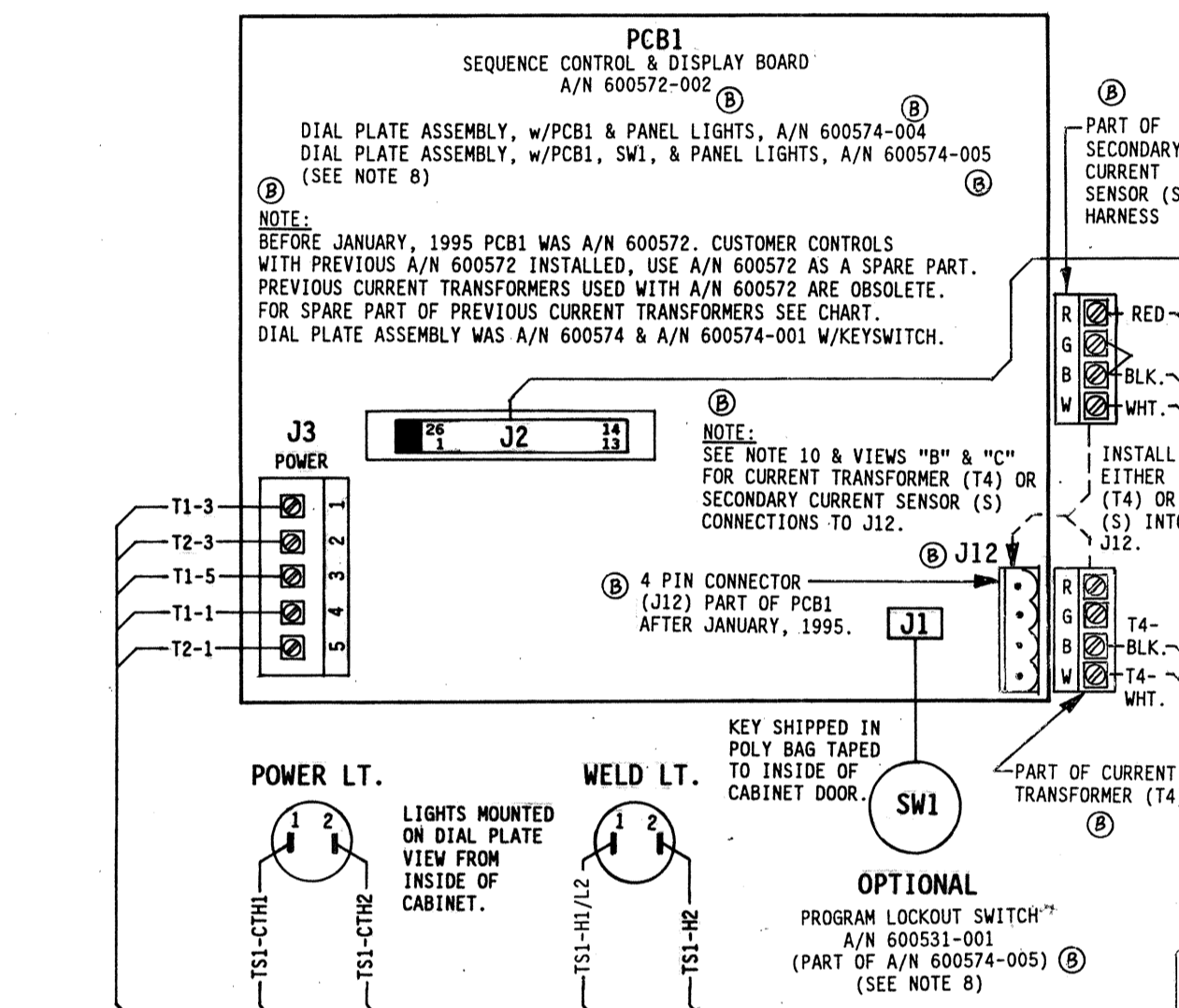
Revision table with columns: REV, AUTH, DESCRIPTION, DATE, SCALE, DATE, DRAWN BY, CHK'D BY, APPROVED BY. Includes ENTRON CONTROLS INC logo and drawing number 421268-001 E.



CURRENT SENSING COIL/SENSOR APPLICATION CHART. Table with columns: COIL/SENSOR MODEL NUMBER, CURRENT TRANSFORMER OR SECONDARY CURRENT SENSOR PART NUMBER, CONTACTOR SIZE (300A, 600A, 1200A, 1800A, 2200A).



- NOTES: 1. It is recommended that control wiring... 2. For 380 VAC Operation - Use Jumpers #3 on TS1. DO NOT CHANGE JUMPERS! For 230, 460, & 575 VAC Operation - CONSULT FACTORY. 3. For Single Stage Pilot Operation... 4. EN1001-SERIES, "E" Cabinet: ENTRON supplies Temperature Limit Switch (TLS) P/N 300020 and provides connections to TS1-TLS1/AUX1 & TS1-GND.



FOR SERVICE ON THIS CONTROL CONTACT YOUR MACHINE DEALER ENTRON CONTROLS INC. DIRECTLY (630) 882-9600 465 EAST RANDY ROAD CAROL STREAM, IL 60188 FAX # (630) 882-3374