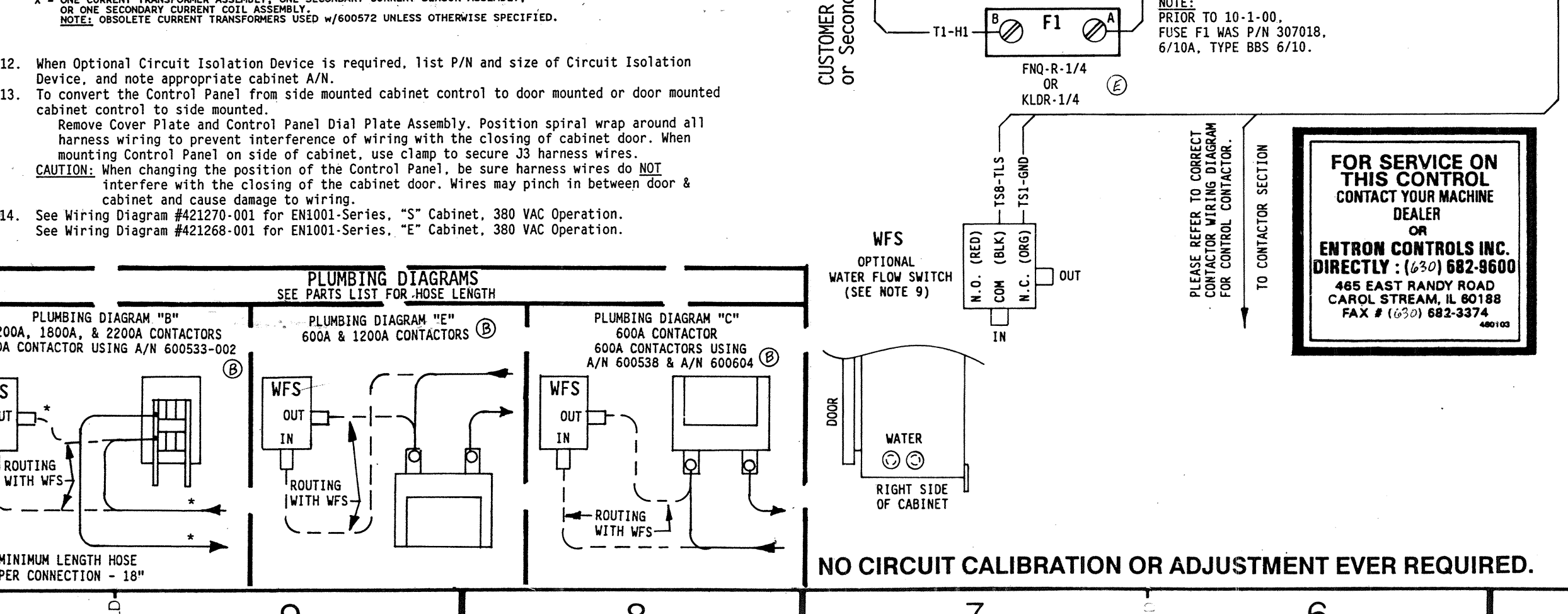


CURRENT SENSING COIL/SENSOR APPLICATION CHART

COLL/SENSOR MODEL NUMBER	CURRENT TRANSFORMER OR SECONDARY CURRENT SENSOR	300A CONT.	600A CONT.	1200A CONT.	1800A CONT.	2200A CONT.
PS - 20015	#600575-001 OBSOLETE (USED w/600572-002)	X	X	X	X	X
PS - 20015	#600575-002 OBSOLETE (USED w/600572-002)	X	X	X	X	X
PS - 20015	#600576-001 OBSOLETE	X	X	X	X	X
PS - 20015	#600576-002 OBSOLETE (USED w/600572-002)	X	X	X	X	X
PS - 20015	#600576-003 OBSOLETE	X	X	X	X	X
PS - 20015	#600576-004 OBSOLETE (USED w/600572-002)	X	X	X	X	X
PS - 20015	#600576-005 OBSOLETE	X	X	X	X	X
PS - 20015	#600576-006 OBSOLETE	X	X	X	X	X
PS - 20015	#600576-007 OBSOLETE	X	X	X	X	X
PS - 20015	#600576-008 OBSOLETE	X	X	X	X	X
PS - 20015	#600576-009 OBSOLETE	X	X	X	X	X
PS - 20015	#600576-010 OBSOLETE	X	X	X	X	X
PS - 20015	#600576-011 OBSOLETE	X	X	X	X	X
PS - 20015	#600576-012 OBSOLETE	X	X	X	X	X
PS - 20015	#600576-013 OBSOLETE	X	X	X	X	X
PS - 20015	#600576-014 OBSOLETE	X	X	X	X	X
PS - 20015	#600576-015 OBSOLETE	X	X	X	X	X
PS - 20015	#600576-016 OBSOLETE	X	X	X	X	X
PS - 20015	#600576-017 OBSOLETE	X	X	X	X	X
PS - 20015	#600576-018 OBSOLETE	X	X	X	X	X
PS - 20015	#600576-019 OBSOLETE	X	X	X	X	X
PS - 20015	#600576-020 OBSOLETE	X	X	X	X	X
PS - 20015	#600576-021 OBSOLETE	X	X	X	X	X
PS - 20015	#600576-022 OBSOLETE	X	X	X	X	X
PS - 20015	#600576-023 OBSOLETE	X	X	X	X	X
PS - 20015	#600576-024 OBSOLETE	X	X	X	X	X
PS - 20015	#600576-025 OBSOLETE	X	X	X	X	X
PS - 20015	#600576-026 OBSOLETE	X	X	X	X	X
PS - 20015	#600576-027 OBSOLETE	X	X	X	X	X
PS - 20015	#600576-028 OBSOLETE	X	X	X	X	X
PS - 20015	#600576-029 OBSOLETE	X	X	X	X	X
PS - 20015	#600576-030 OBSOLETE	X	X	X	X	X
PS - 20015	#600576-031 OBSOLETE	X	X	X	X	X
PS - 20015	#600576-032 OBSOLETE	X	X	X	X	X
PS - 20015	#600576-033 OBSOLETE	X	X	X	X	X
PS - 20015	#600576-034 OBSOLETE	X	X	X	X	X
PS - 20015	#600576-035 OBSOLETE	X	X	X	X	X
PS - 20015	#600576-036 OBSOLETE	X	X	X	X	X
PS - 20015	#600576-037 OBSOLETE	X	X	X	X	X
PS - 20015	#600576-038 OBSOLETE	X	X	X	X	X
PS - 20015	#600576-039 OBSOLETE	X	X	X	X	X
PS - 20015	#600576-040 OBSOLETE	X	X	X	X	X
PS - 20015	#600576-041 OBSOLETE	X	X	X	X	X
PS - 20015	#600576-042 OBSOLETE	X	X	X	X	X
PS - 20015	#600576-043 OBSOLETE	X	X	X	X	X
PS - 20015	#600576-044 OBSOLETE	X	X	X	X	X
PS - 20015	#600576-045 OBSOLETE	X	X	X	X	X
PS - 20015	#600576-046 OBSOLETE	X	X	X	X	X
PS - 20015	#600576-047 OBSOLETE	X	X	X	X	X
PS - 20015	#600576-048 OBSOLETE	X	X	X	X	X
PS - 20015	#600576-049 OBSOLETE	X	X	X	X	X
PS - 20015	#600576-050 OBSOLETE	X	X	X	X	X



WARNING: HIGH VOLTAGE

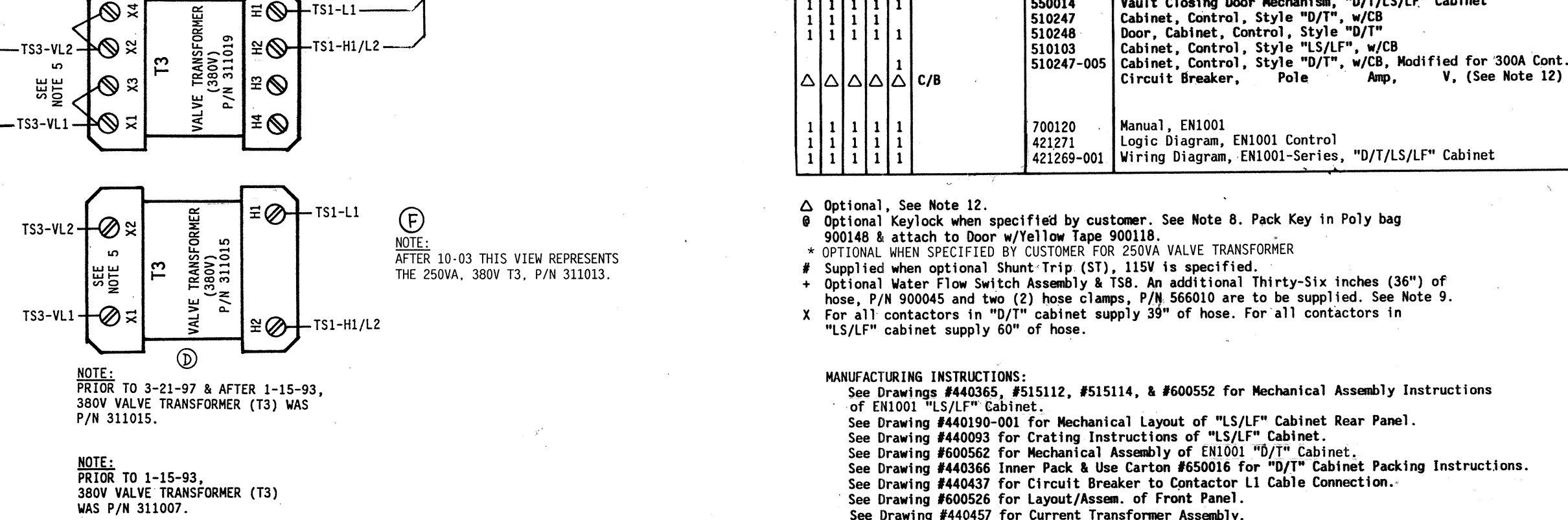
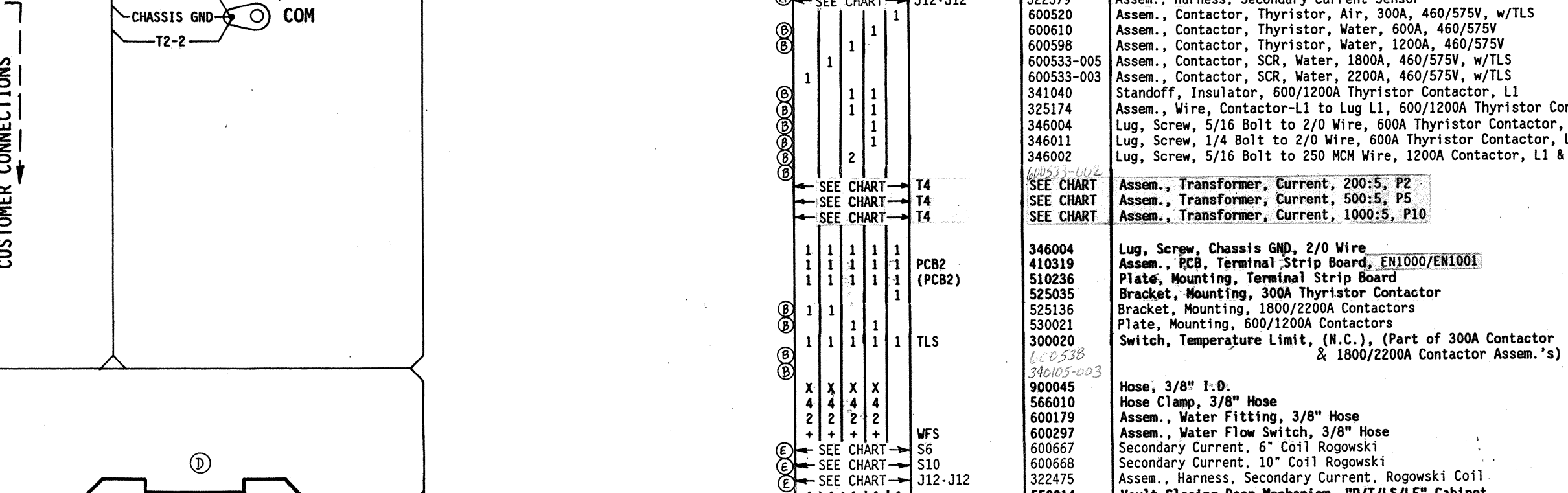
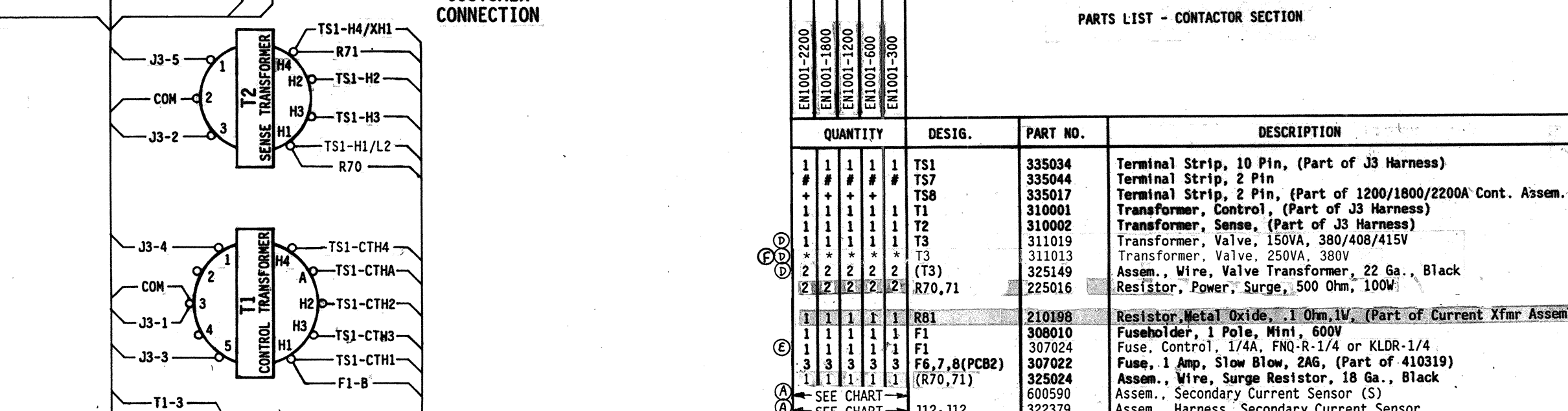
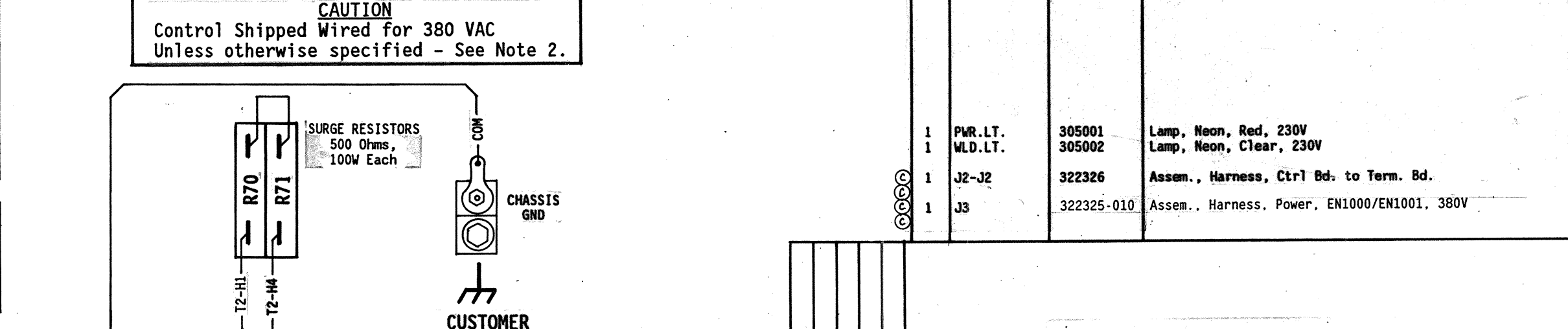
VOLTAGES PRESENT IN THIS CONTROL CAN CAUSE SEVERE OR FATAL INJURIES. NOTE: EVEN THOUGH SUPPLY POWER TO THIS UNIT HAS BEEN DISCONNECTED, THERE MAY BE VOLTAGES IN THIS CONTROL ORIGINATING FROM OTHER SOURCES. FOR ALL VOLTAGE POTENTIAL TO BE REMOVED FROM THIS CONTROL, POWER MUST BE REMOVED FROM ALL EXTERNAL CONTROL CIRCUITS CONNECTED TO TERMINALS IN THIS CABINET.

CAUTION

DO NOT OPERATE WITHOUT WATER ON

POWER ON WITHOUT WATER FLOW MAY CAUSE DAMAGE TO CONTROL. TURN POWER OFF WHEN CONTROL IS NOT IN USE.

Control Shipped Wired for 380 VAC Unless otherwise specified - See Note 2.



ENTRON CONTROLS INC.

421269-001

REV.	DATE	DESCRIPTION	CHK'D BY	DATE
1	10/28/94	ORIGINAL RELEASE		
2	12/26/96	REVISED		
3	12/26/96	REVISED		
4	12/26/96	REVISED		
5	12/26/96	REVISED		
6	12/26/96	REVISED		
7	12/26/96	REVISED		
8	12/26/96	REVISED		
9	12/26/96	REVISED		
10	12/26/96	REVISED		
11	12/26/96	REVISED		
12	12/26/96	REVISED		
13	12/26/96	REVISED		
14	12/26/96	REVISED		
15	12/26/96	REVISED		
16	12/26/96	REVISED		
17	12/26/96	REVISED		
18	12/26/96	REVISED		
19	12/26/96	REVISED		
20	12/26/96	REVISED		
21	12/26/96	REVISED		
22	12/26/96	REVISED		
23	12/26/96	REVISED		
24	12/26/96	REVISED		
25	12/26/96	REVISED		
26	12/26/96	REVISED		
27	12/26/96	REVISED		
28	12/26/96	REVISED		
29	12/26/96	REVISED		
30	12/26/96	REVISED		
31	12/26/96	REVISED		
32	12/26/96	REVISED		
33	12/26/96	REVISED		
34	12/26/96	REVISED		
35	12/26/96	REVISED		
36	12/26/96	REVISED		
37	12/26/96	REVISED		
38	12/26/96	REVISED		
39	12/26/96	REVISED		
40	12/26/96	REVISED		
41	12/26/96	REVISED		
42	12/26/96	REVISED		
43	12/26/96	REVISED		
44	12/26/96	REVISED		
45	12/26/96	REVISED		
46	12/26/96	REVISED		
47	12/26/96	REVISED		
48	12/26/96	REVISED		
49	12/26/96	REVISED		
50	12/26/96	REVISED		
51	12/26/96	REVISED		
52	12/26/96	REVISED		
53	12/26/96	REVISED		
54	12/26/96	REVISED		
55	12/26/96	REVISED		
56	12/26/96	REVISED		
57	12/26/96	REVISED		
58	12/26/96	REVISED		
59	12/26/96	REVISED		
60	12/26/96	REVISED		
61	12/26/96	REVISED		
62	12/26/96	REVISED		
63	12/26/96	REVISED		
64	12/26/96	REVISED		
65	12/26/96	REVISED		
66	12/26/96	REVISED		
67	12/26/96	REVISED		
68	12/26/96	REVISED		
69	12/26/96	REVISED		
70	12/26/96	REVISED		
71	12/26/96	REVISED		
72	12/26/96	REVISED		
73	12/26/96	REVISED		
74	12/26/96	REVISED		
75	12/26/96	REVISED		
76	12/26/96	REVISED		
77	12/26/96	REVISED		
78	12/26/96	REVISED		
79	12/26/96	REVISED		
80	12/26/96	REVISED		
81	12/26/96	REVISED		
82	12/26/96	REVISED		
83	12/26/96	REVISED		
84	12/26/96	REVISED		
85	12/26/96	REVISED		
86	12/26/96	REVISED		
87	12/26/96	REVISED		
88	12/26/96	REVISED		
89	12/26/96	REVISED		
90	12/26/96	REVISED		
91	12/26/96	REVISED		
92	12/26/96	REVISED		
93	12/26/96	REVISED		
94	12/26/96	REVISED		
95	12/26/96	REVISED		
96	12/26/96	REVISED		
97	12/26/96	REVISED		
98	12/26/96	REVISED		
99	12/26/96	REVISED		
100	12/26/96	REVISED		