

NOTICE FOR SERVICE ON THIS CONTROL Dealer Of ENTRON CONTROLS INC. DIRECTION (636) 682-9900 465 EAST RANDY ROAD CARLISLE, PA 17015 FAX F (636) 682-3374

DANGER HAZARDOUS VOLTAGE FROM ONE OR MORE SOURCES Turn off all voltage sources before touching any components. Electrical shock or death will cause severe injury or death.

Table with 4 columns: QTY., DESIG., PART NO., DESCRIPTION. Lists parts like Assem., Dial Plate, w/Sw. Assem., EN1001, and Lamp, Neon, Red, 230V.

Table with 4 columns: QTY., DESIG., PART NO., DESCRIPTION. Lists parts like Terminal Strip, 10 Pin, and Resistor, Power, 2000 Ohm, 1W.

Optionals, See Note 12. Lists optional parts like Door w/Yellow Tape 900118 and Crating Instructions of EN1001.

Table with 4 columns: REV, AUTH, DATE, DESCRIPTION, DRAWN BY, CHK'D BY, DATE. Includes ENTRON CONTROLS INC. logo.

Table with 4 columns: SCALE, DATE, DRAWN BY, CHK'D BY, APPROVED BY. Includes ENTRON CONTROLS INC. logo and drawing details.

CAUTION Control Shipped Wired for 460 VAC Operation unless otherwise specified - See Note 2.

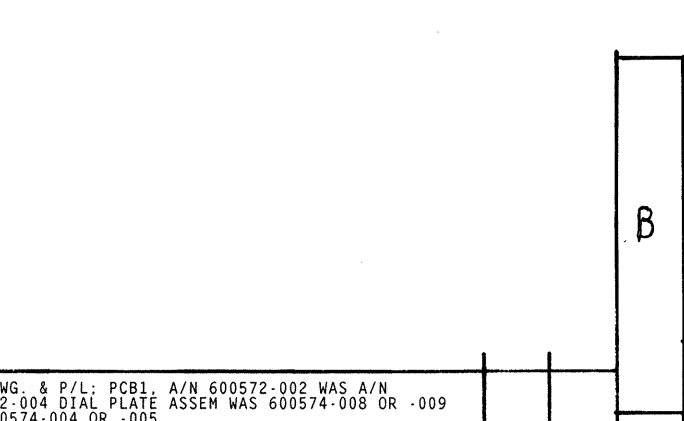
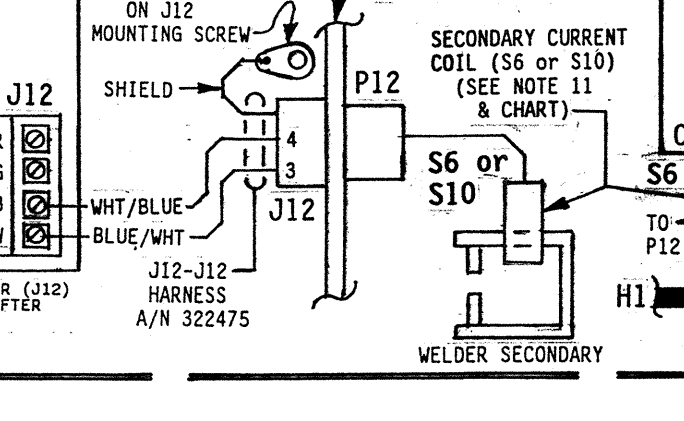
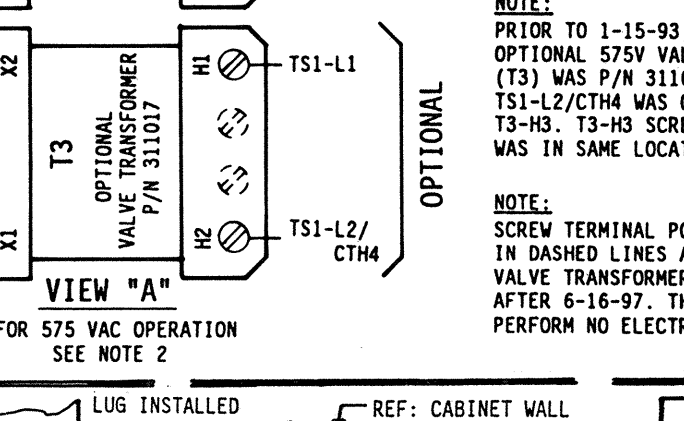
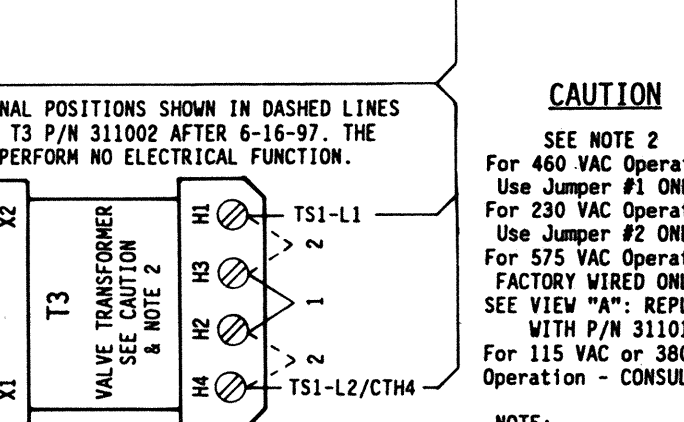
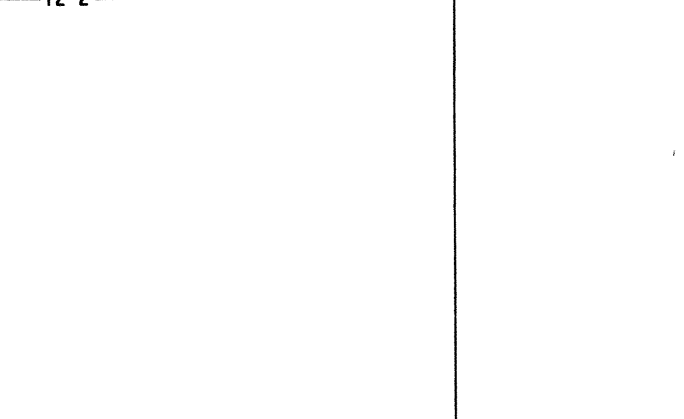
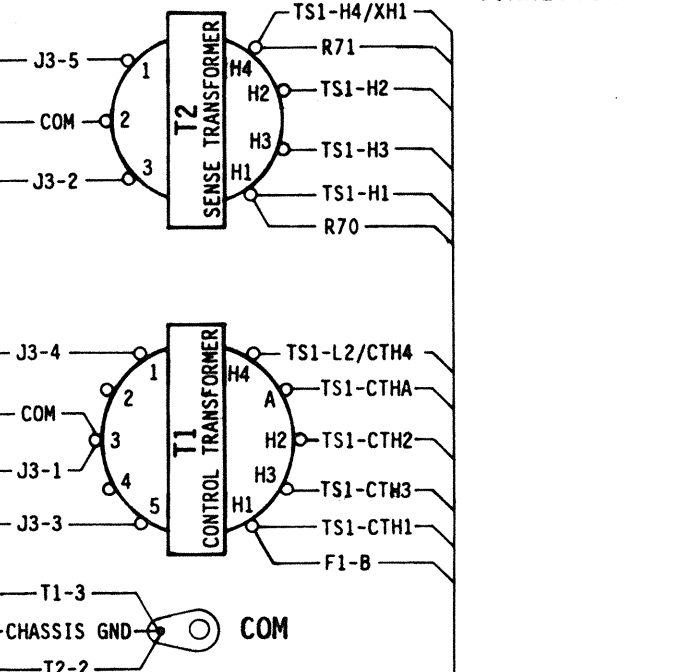
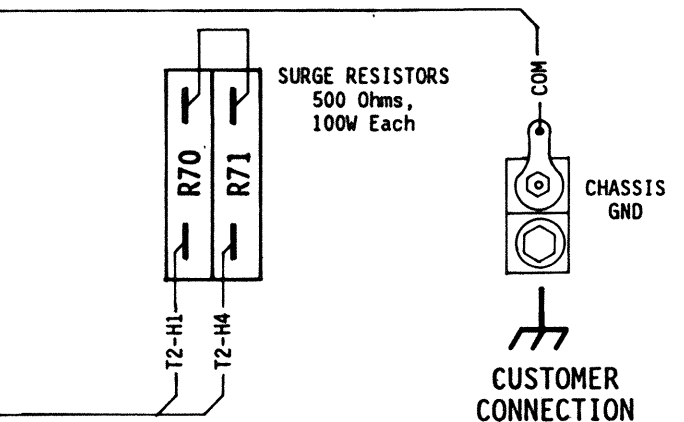
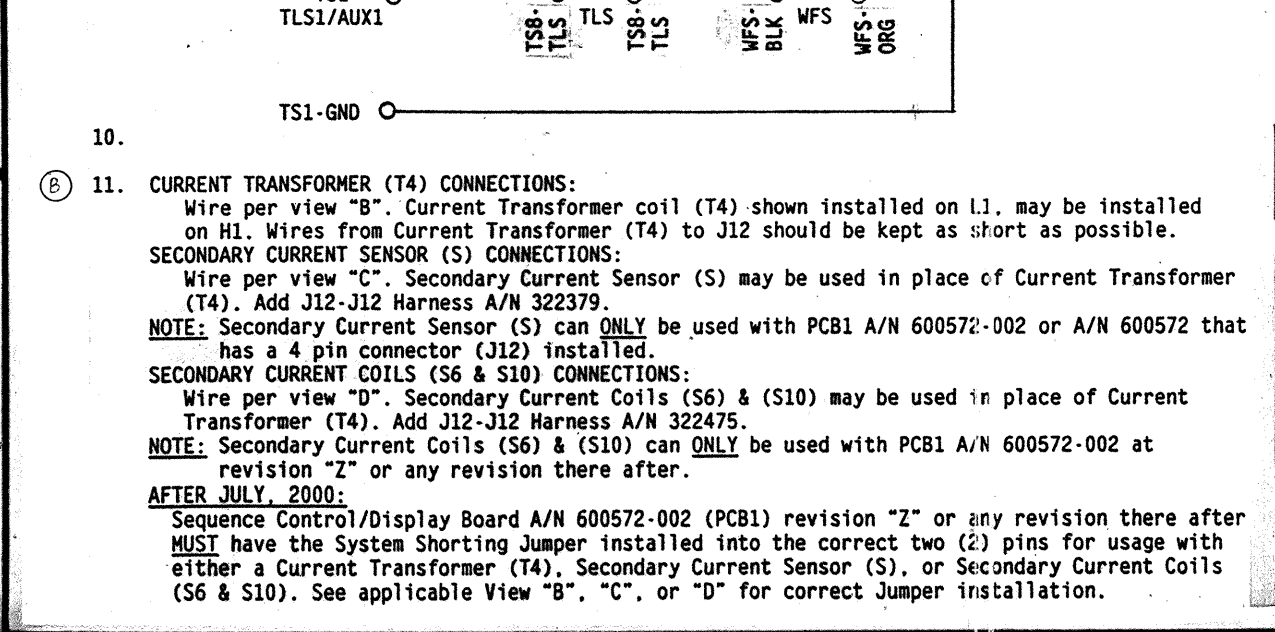
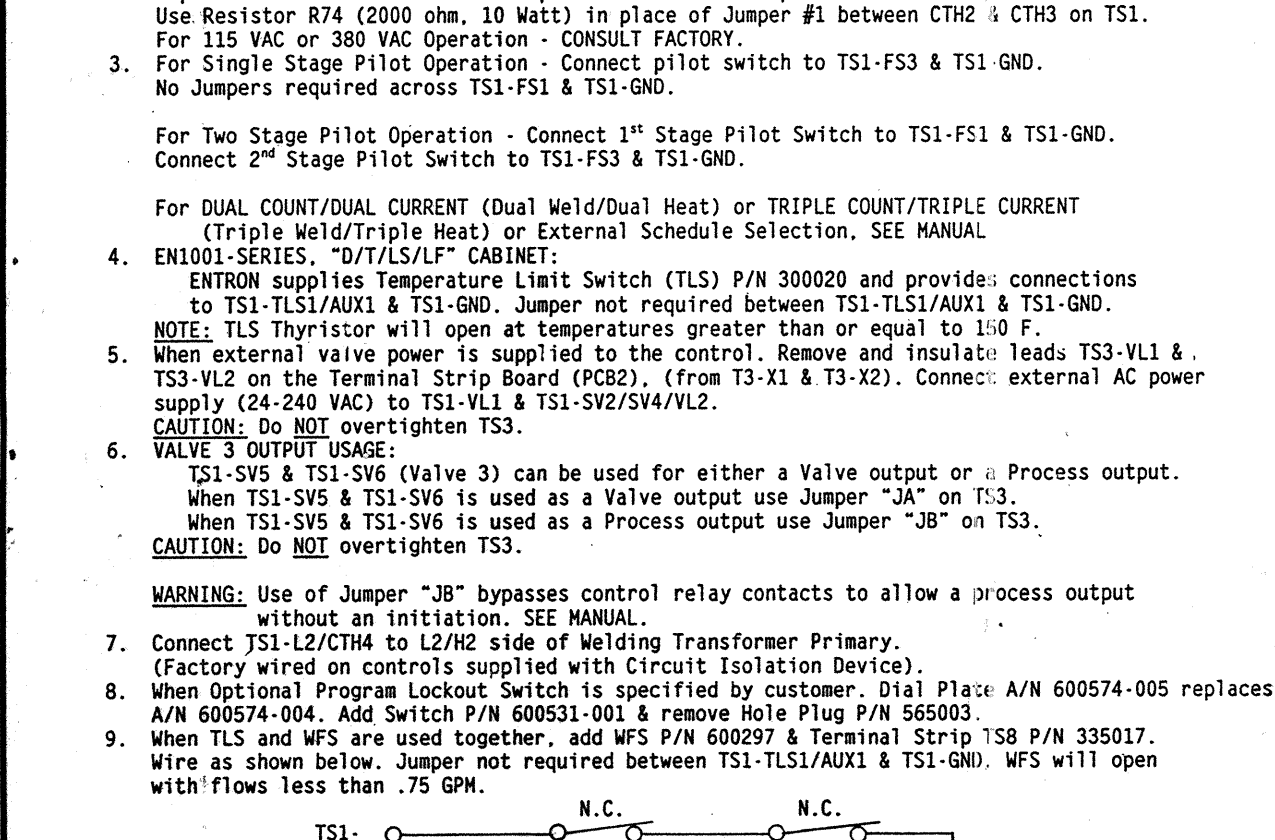
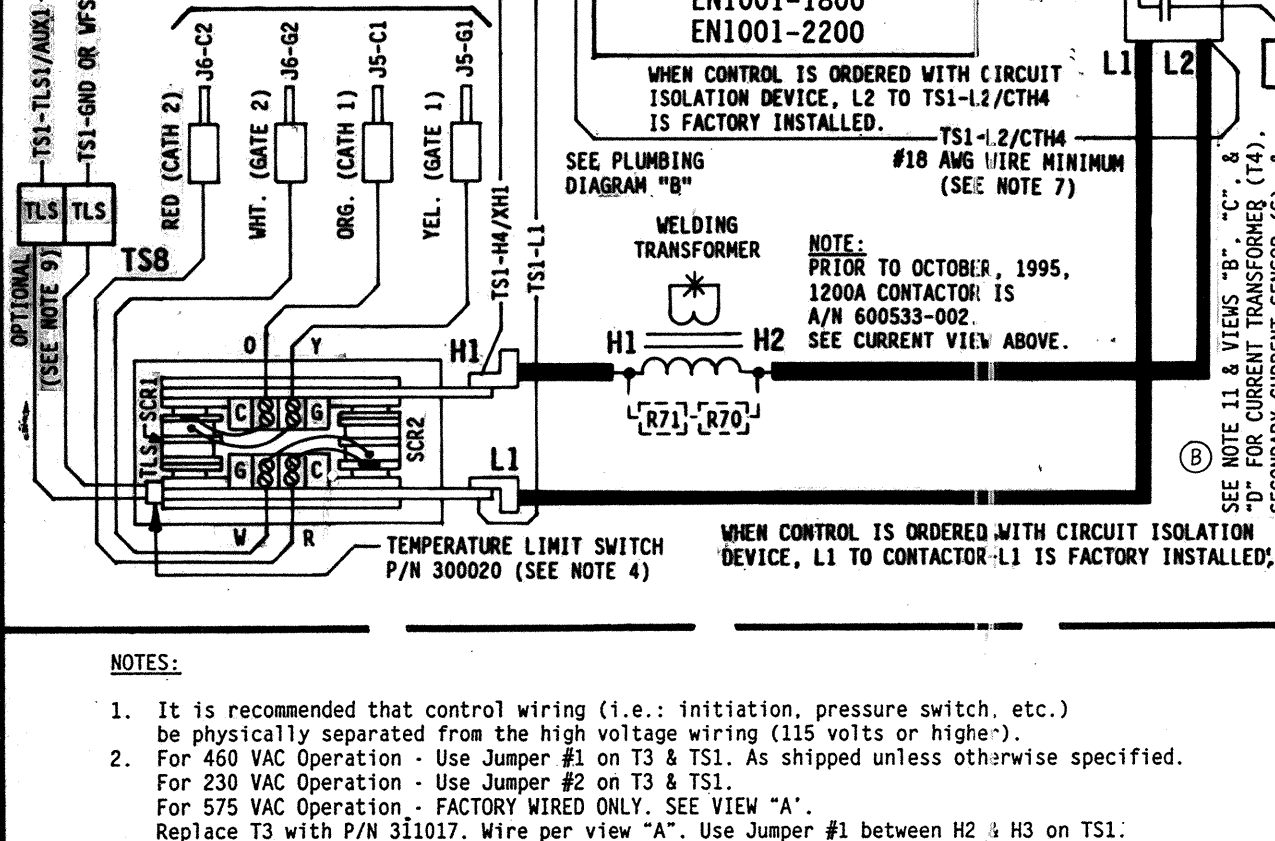
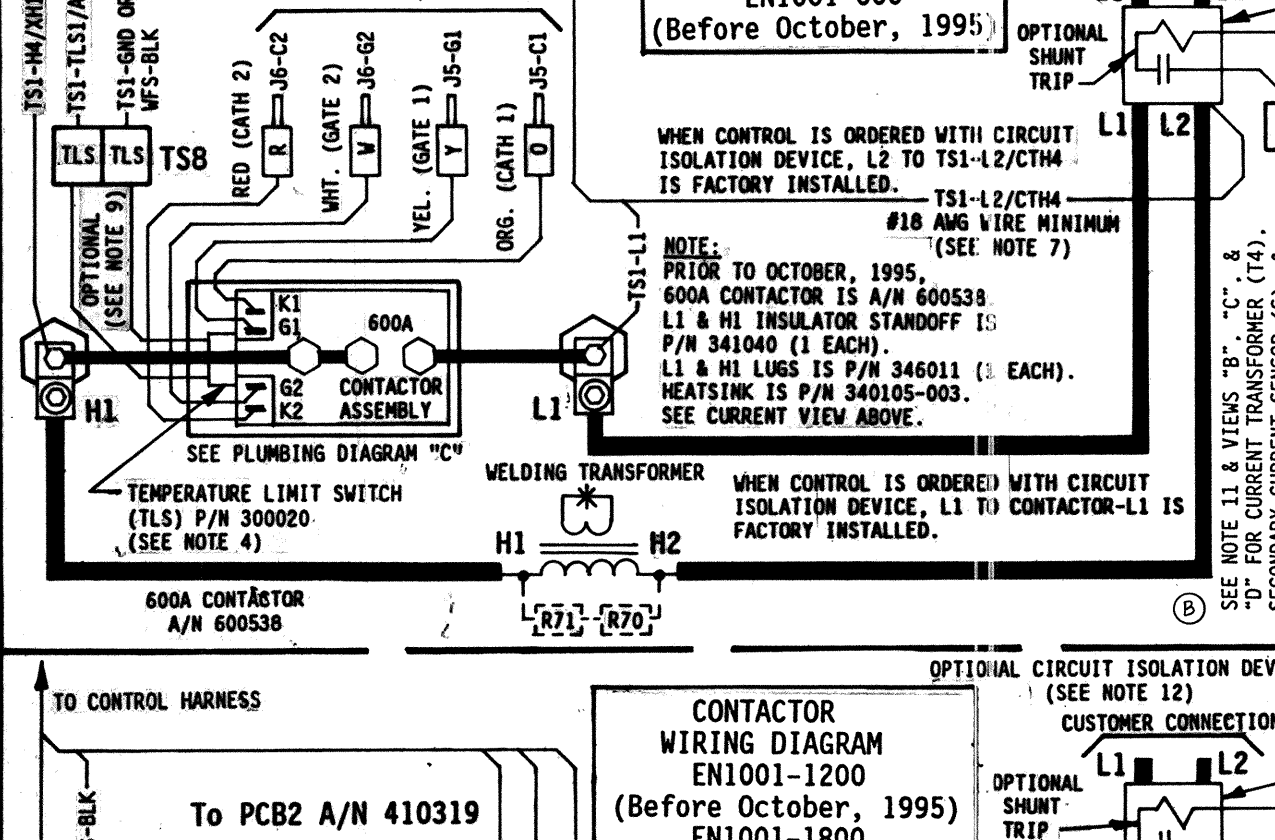
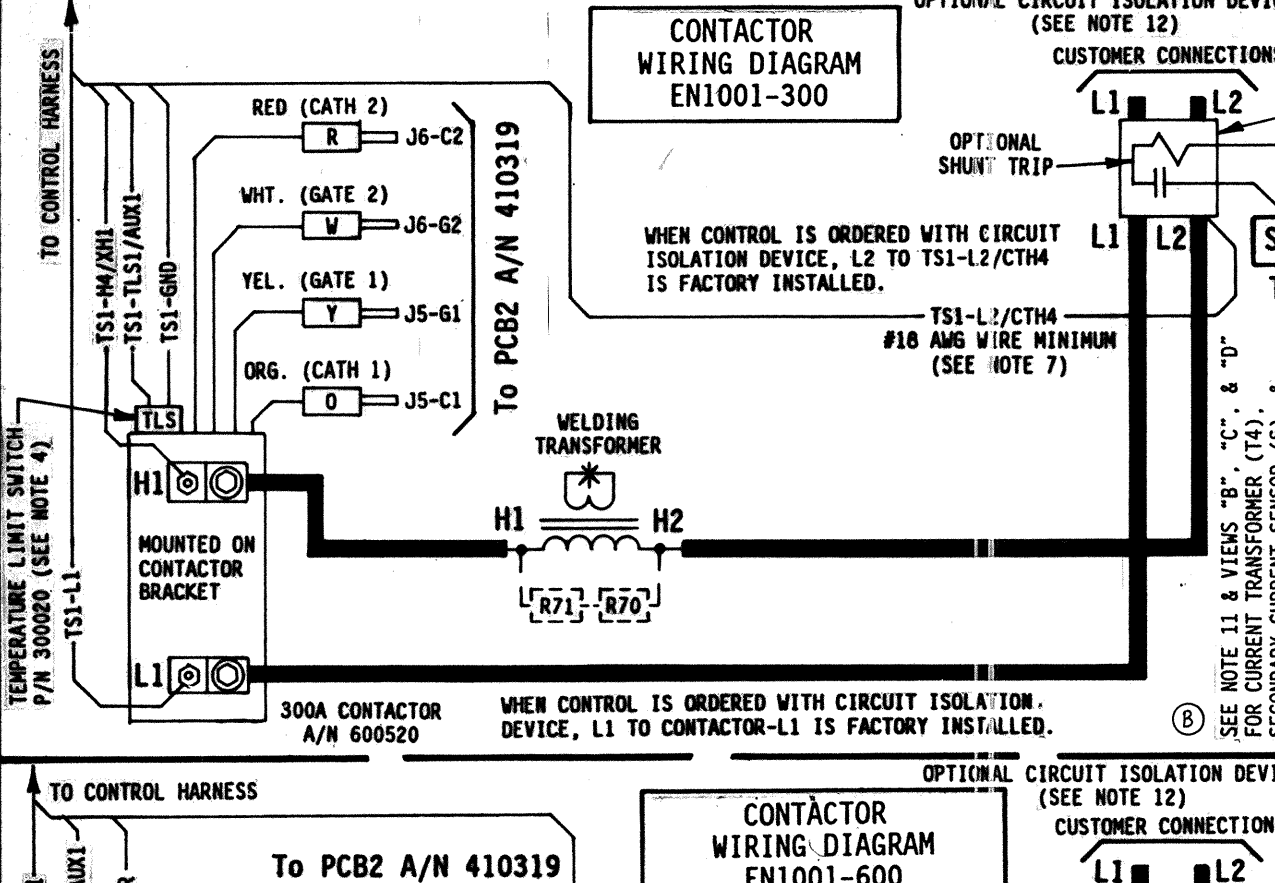
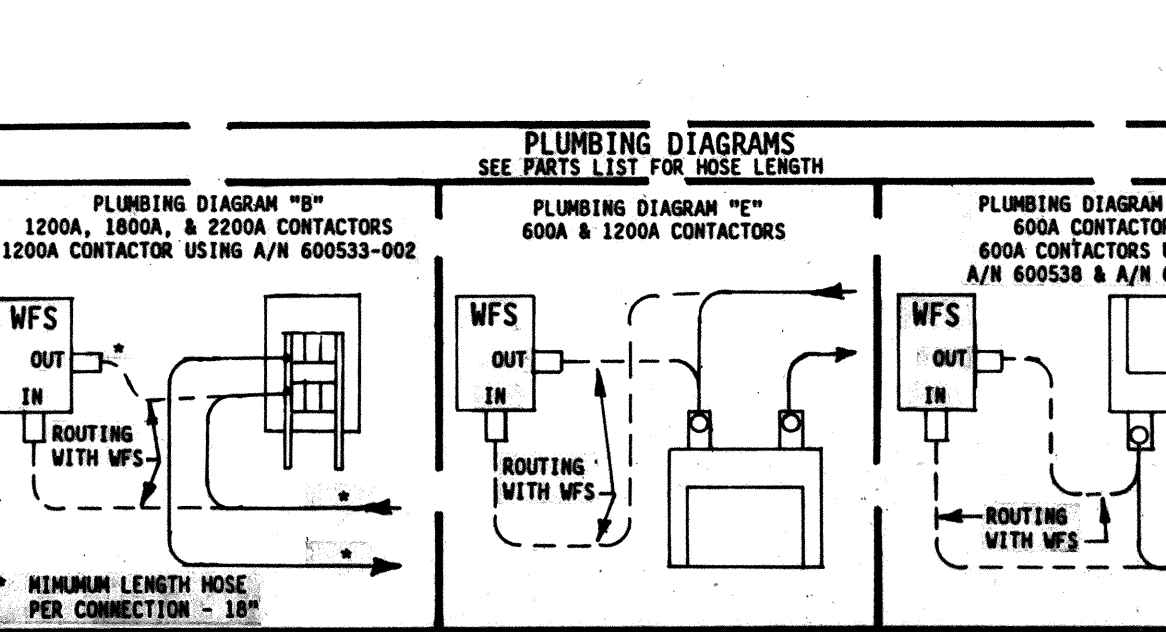
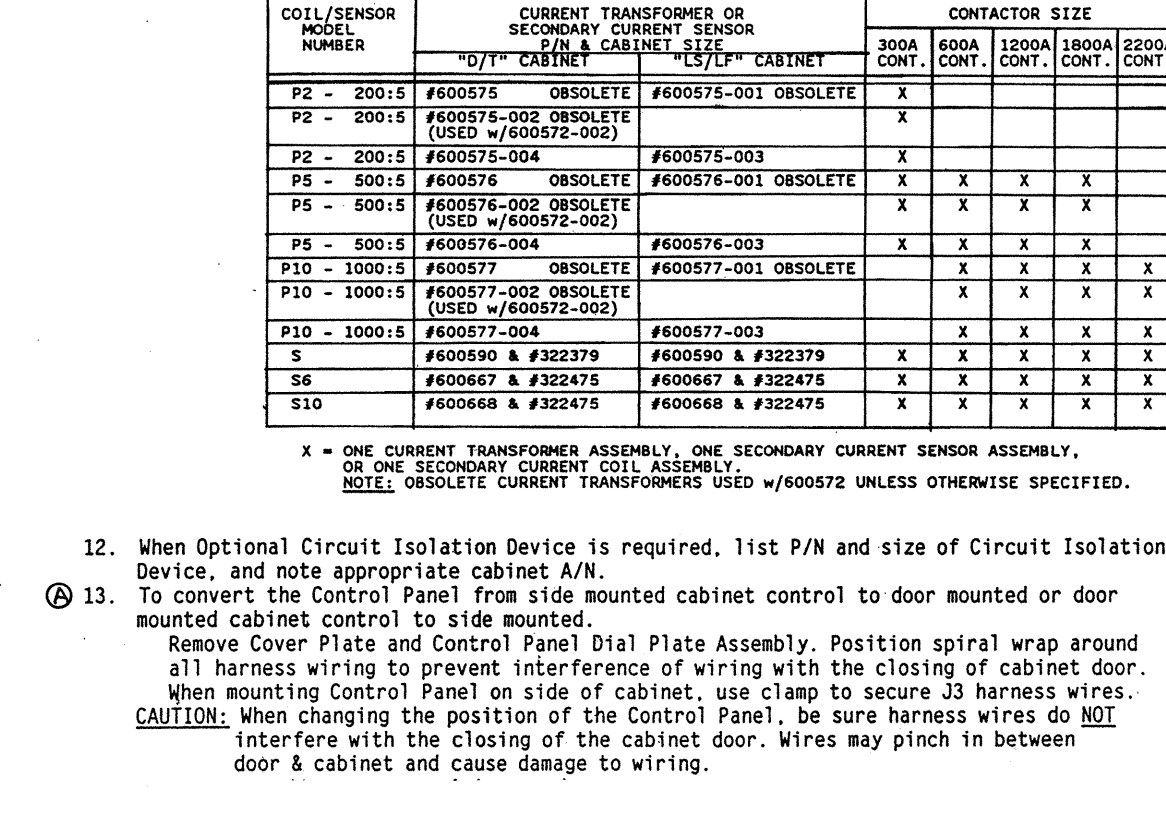
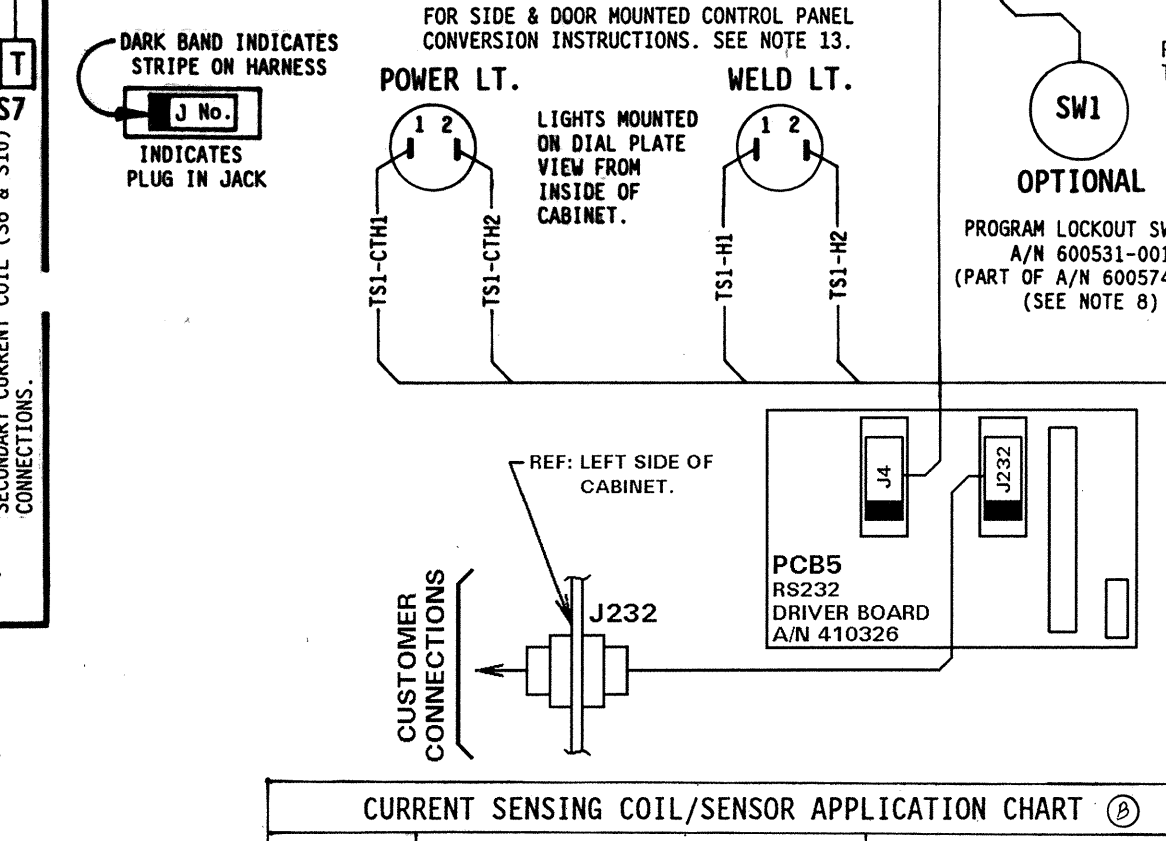
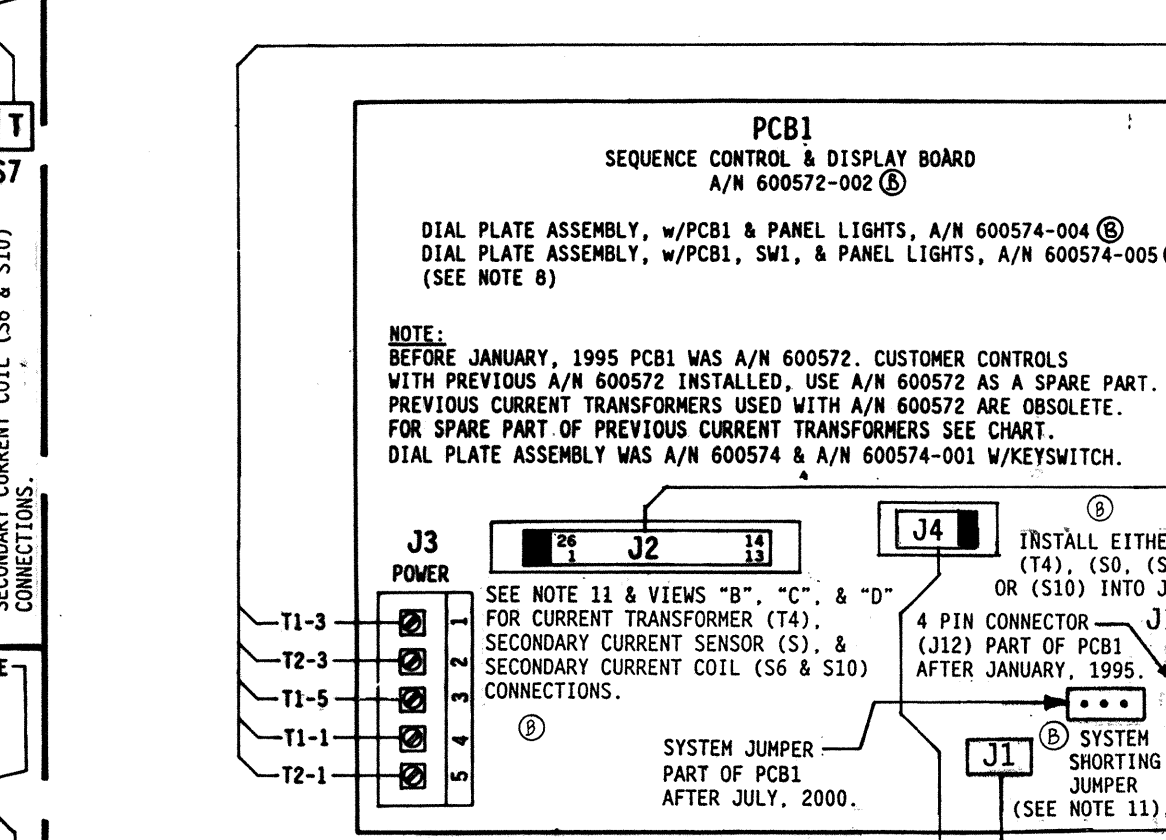
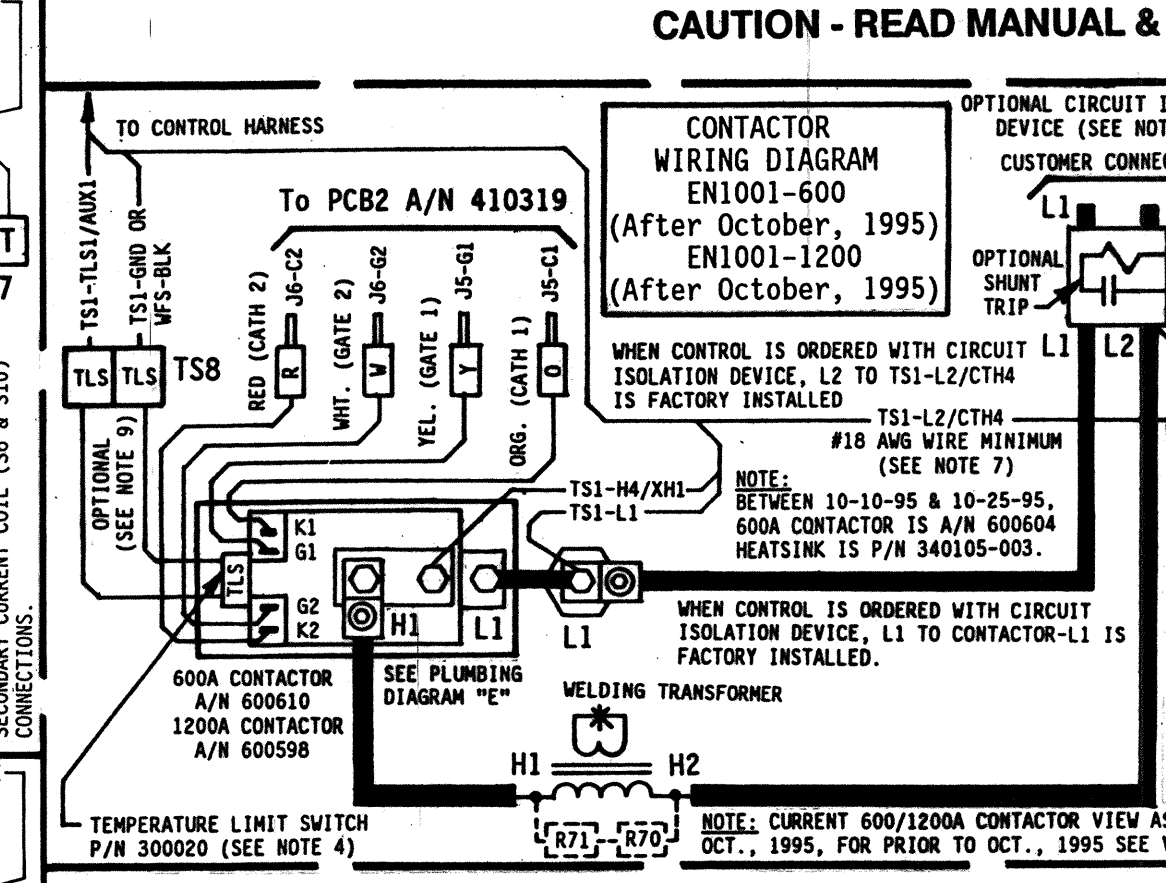
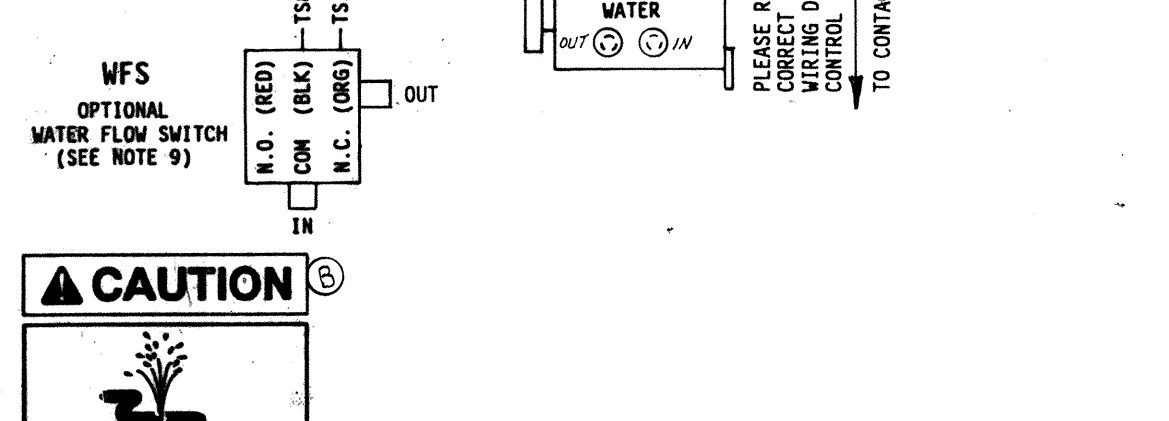
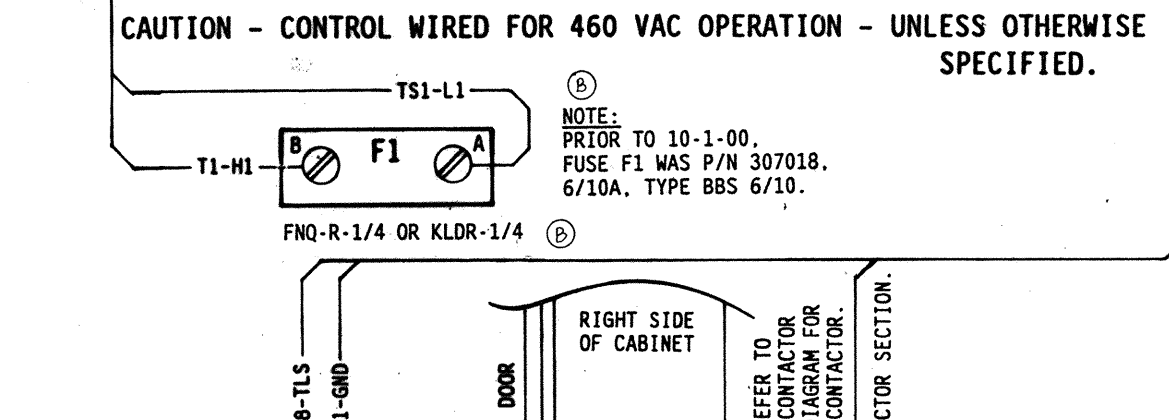
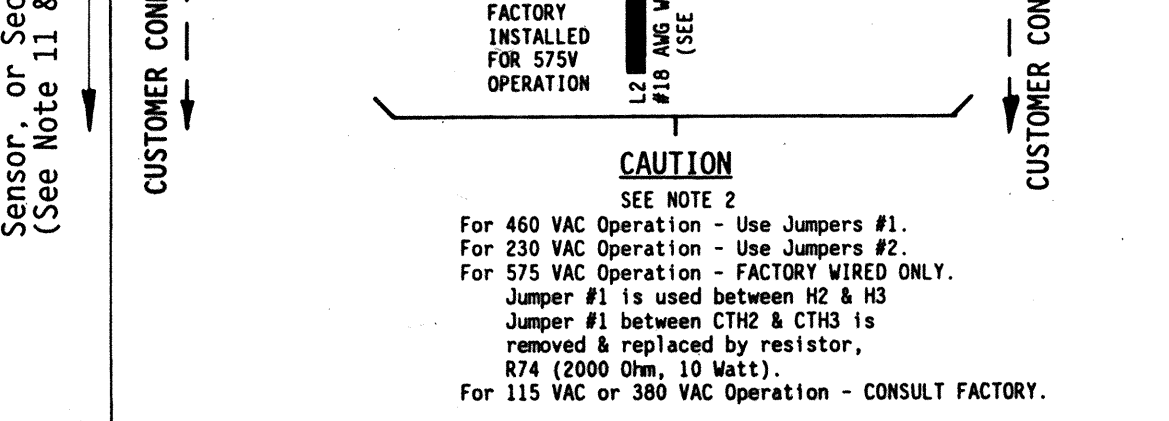
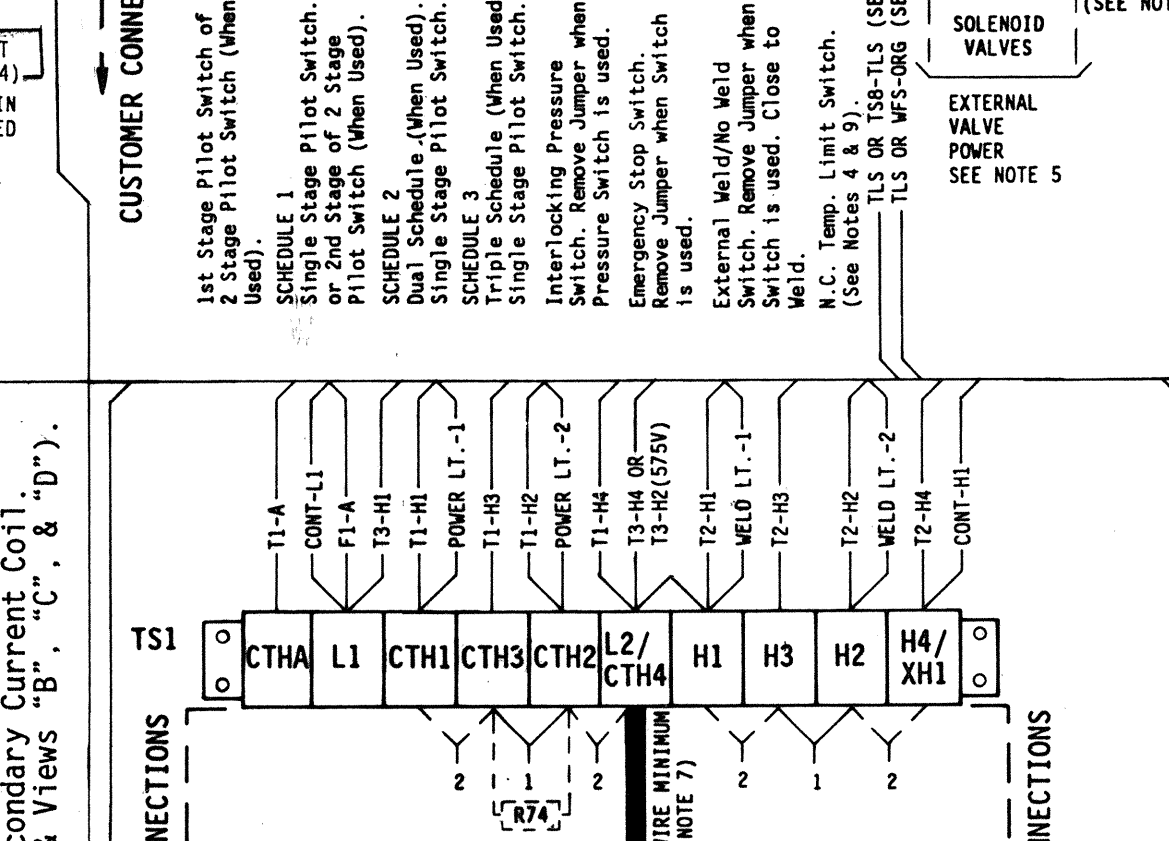
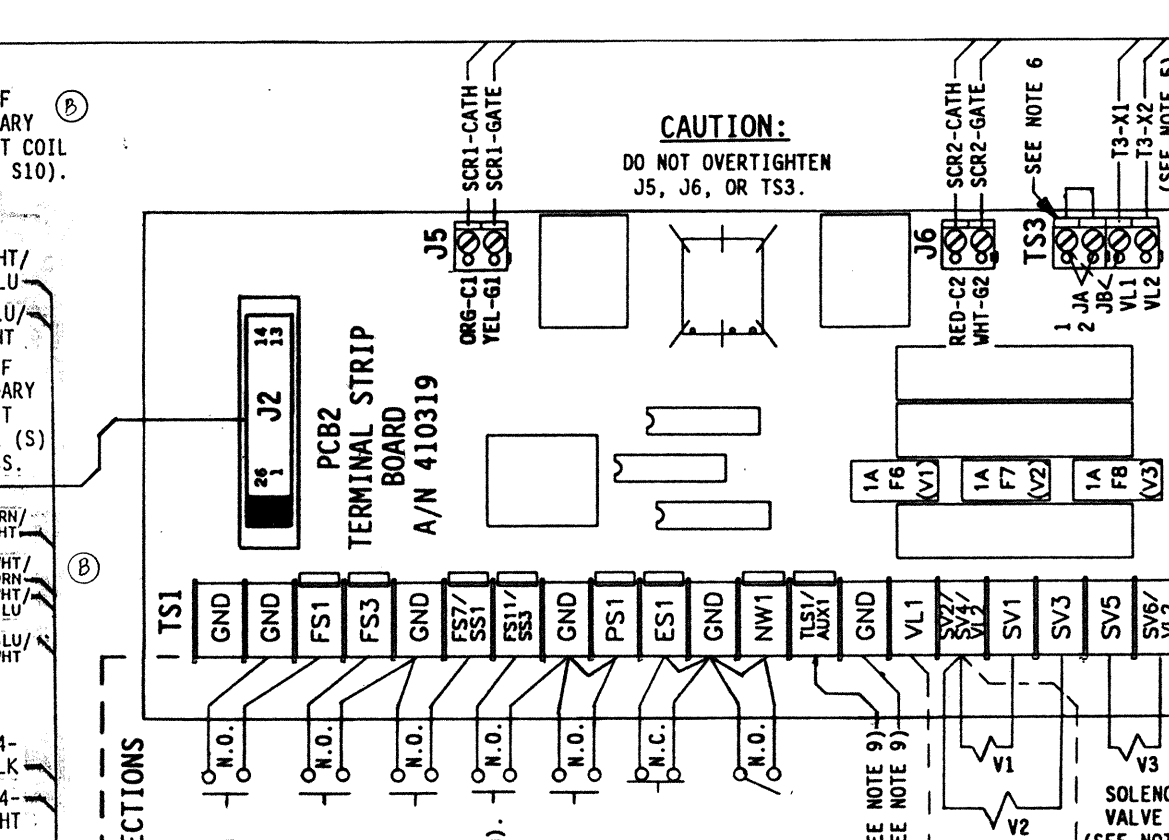
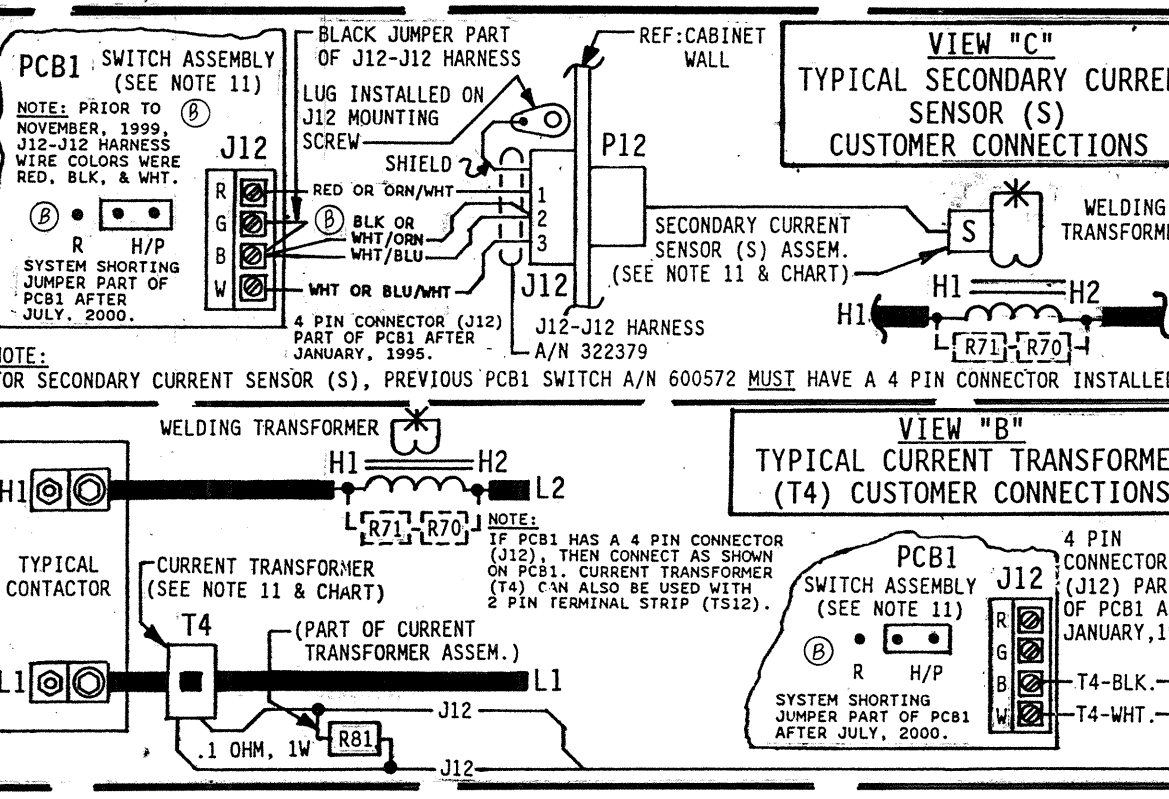


Table with 4 columns: REV, AUTH, DATE, DESCRIPTION. Lists revisions for PCB1 switch assembly.

CAUTION - READ MANUAL & ALL NOTES BEFORE INSTALLING OR OPERATING CONTROL. SEE NOTE 1. NO CIRCUIT CALIBRATION OR ADJUSTMENT EVER REQUIRED.



NOTES: 1. It is recommended that control wiring (i.e.: initiation, pressure switch, etc.) be physically separated from the high voltage wiring (115 volts or higher). 2. For 460 VAC Operation - Use Jumper #1 on T3 & TS1. As shipped unless otherwise specified. 3. For 230 VAC Operation - Use Jumper #2 on T3 & TS1. 4. For 575 VAC Operation - Factory wired only. See View "A". 5. For 115 VAC or 380 VAC Operation - Consult Factory. 6. For Single Stage Pilot Operation - Connect pilot switch to TS1-F53 & TS1-GND. 7. For Two Stage Pilot Operation - Connect 1st Stage Pilot Switch to TS1-F51 & TS1-GND. 8. For Dual Count/Dual Current (Dual Weld/Dual Heat) or TRIPLE COUNT/TRIPLE CURRENT (Triple Weld/Triple Heat) or External Schedule Selection, See MANUAL. 9. EN1001-SERIES, "D/T/LS/LF" CABINET: ENTRON supplies Temperature Limit Switch (TLS) P/N 300020 and provides connections to TS1-TLS1/AUX1 & TS1-GND. 10. When external valve power is supplied to the control, remove and insulate leads TS3-VL1 & TS3-VL2 on the Terminal Strip Board (TSB). 11. When TS1-SV5 & TS1-SV6 is used as a Valve output use Jumper "JA" on T3. 12. When TS1-SV5 & TS1-SV6 is used as a Process output use Jumper "JB" on TS3. 13. When optional Circuit Isolation Device is required, list P/N and size of Circuit Isolation Device, and note appropriate cabinet A/N. 14. To convert the Control Panel from side mounted cabinet control to door mounted or door mounted cabinet control to side mounted. 15. Connect J31-L2/CTH4 to L2/H2 side of Welding Transformer Primary. 16. When optional Program Lockout Switch is specified by customer, Dial Plate A/N 600574-005 replaces A/N 600574-004. 17. Add Switch P/N 600531-001 & remove Hole Plug P/N 565003. 18. When TLS and WFS are used together, add WFS P/N 600297 & Terminal Strip TSB P/N 335017. 19. Wire as shown below. Jumper not required between TS1-TLS1/AUX1 & TS1-GND. WFS will open with flows less than .75 GPM. 20. Current Transformer (T4) CONNECTIONS: Wire per view "B". Secondary Current Transformer coil (T4) shown installed on L1, may be installed on H1. Wires from Current Transformer (T4) to J12 should be kept as short as possible. 21. Secondary Current Sensor (S) CONNECTIONS: Wire per view "C". Secondary Current Sensor (S) may be used in place of Current Transformer (T4). Add J12-J12 Harness A/N 322475. 22. Secondary Current Coils (S6 & S10) CONNECTIONS: Wire per view "D". Secondary Current Coils (S6 & S10) may be used in place of Current Transformer (T4). Add J12-J12 Harness A/N 322475. 23. Secondary Current Coils (S6 & S10) may be used with PCB1 A/N 600572-002 at revision "Z" or any revision there after. 24. Sequence Control/Display Board A/N 600572-002 (PCB1) revision "Z" or any revision there after MUST have the System Shorting Jumper installed into the correct two (2) pins for usage with either a Current Transformer (T4), Secondary Current Sensor (S), or Secondary Current Coils (S6 & S10). See applicable View "B", "C", or "D" for correct Jumper installation. 25. Minimum length hose per connection - 18".