

CURRENT SENSING COIL/SENSOR APPLICATION CHART. Table with columns: COIL/SENSING MODEL NUMBER, CURRENT TRANSFORMER OR SECONDARY CURRENT SENSOR PART NUMBER, CONTACTOR SIZE, EXTERNAL FIRING SCR.

HAZARDOUS VOLTAGE FROM ONE OR MORE SOURCES. Turn off all voltage sources before touching any components.

CAUTION Control Shipped Wired for 460 VAC Operation Unless otherwise specified - See Note 2.

CAUTION WATER HOSE BURST HAZARD. Cooling water must be flowing when power is on. Water hose can burst and damage controls.

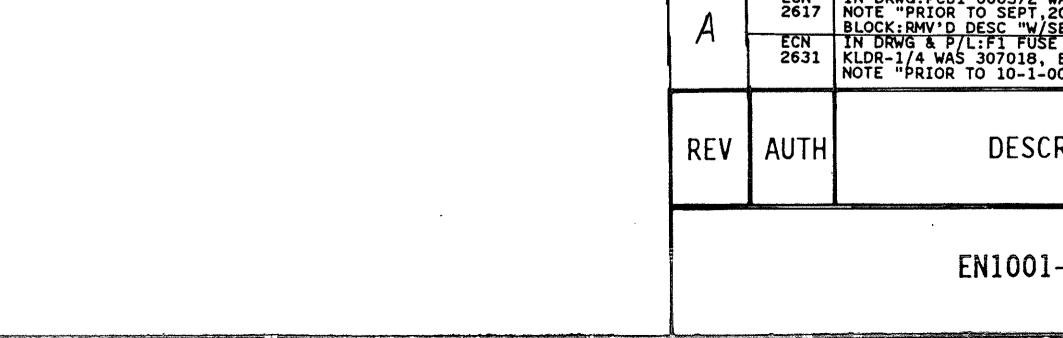
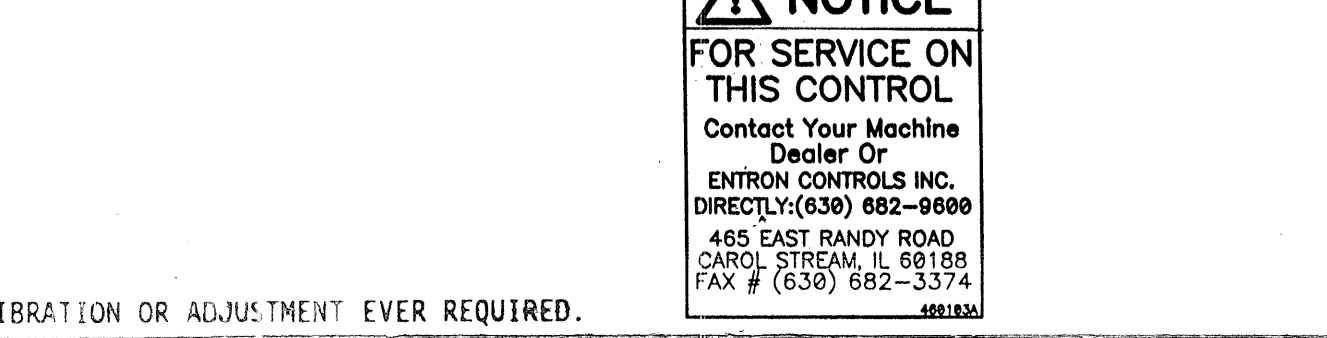
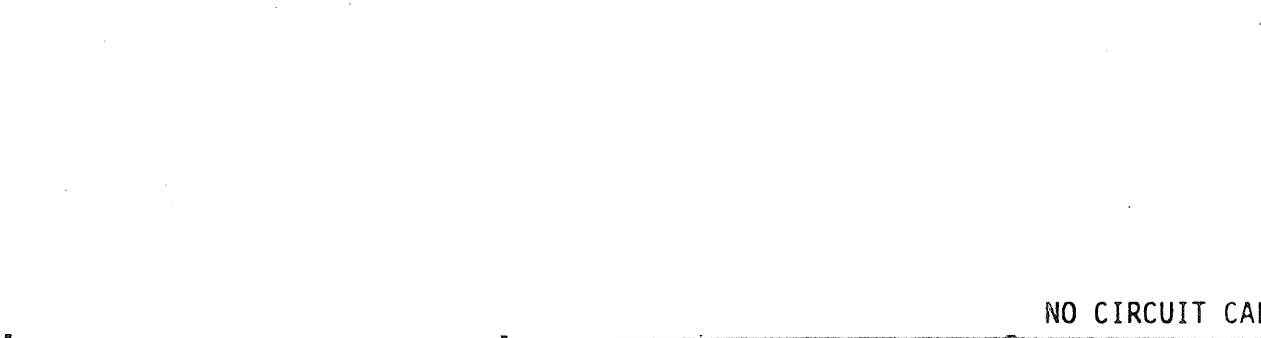
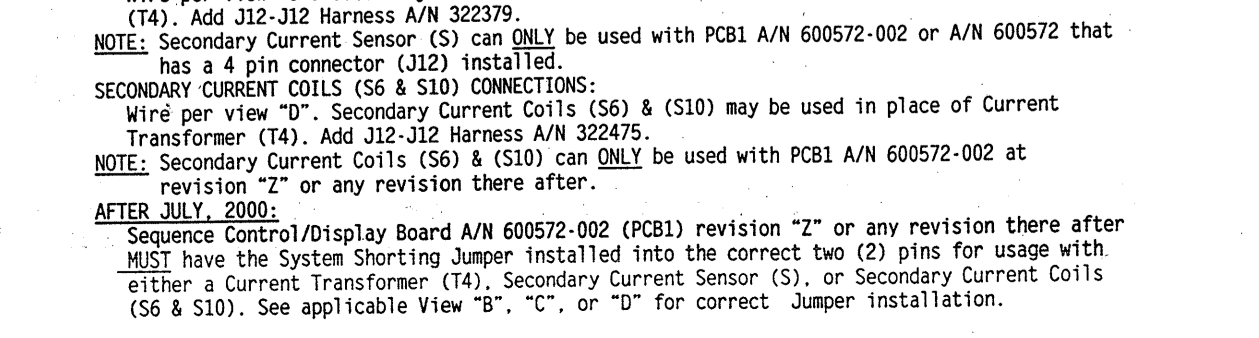
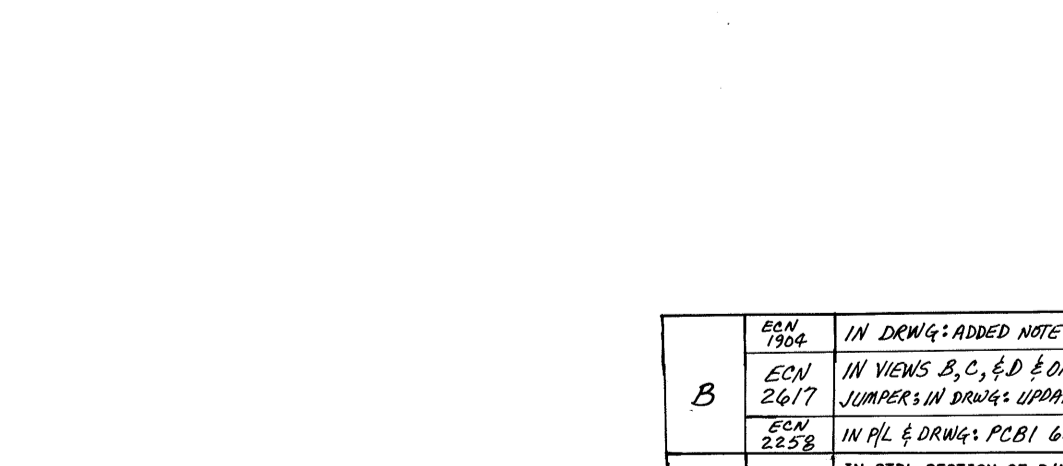
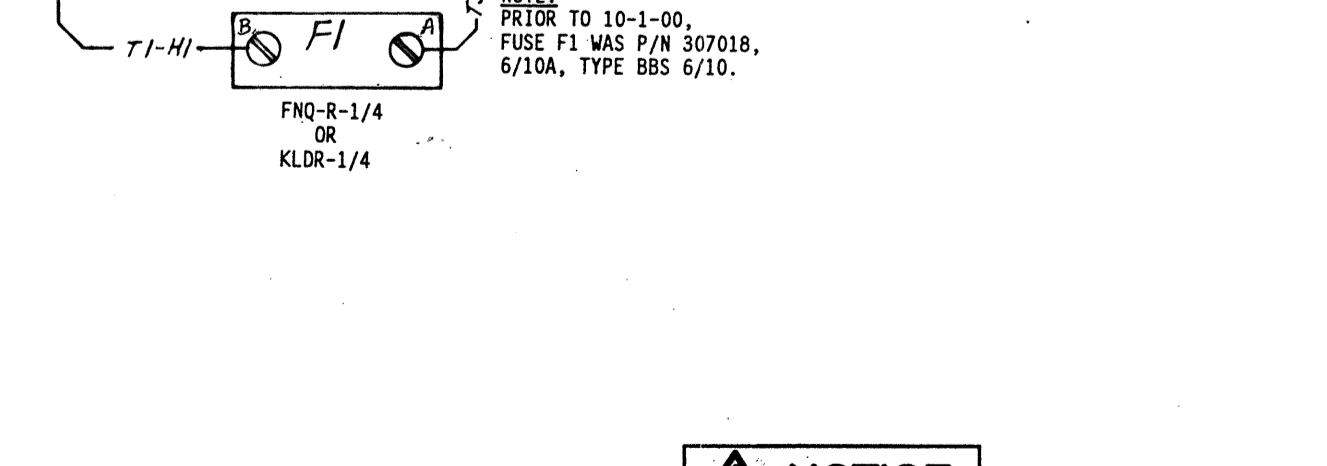
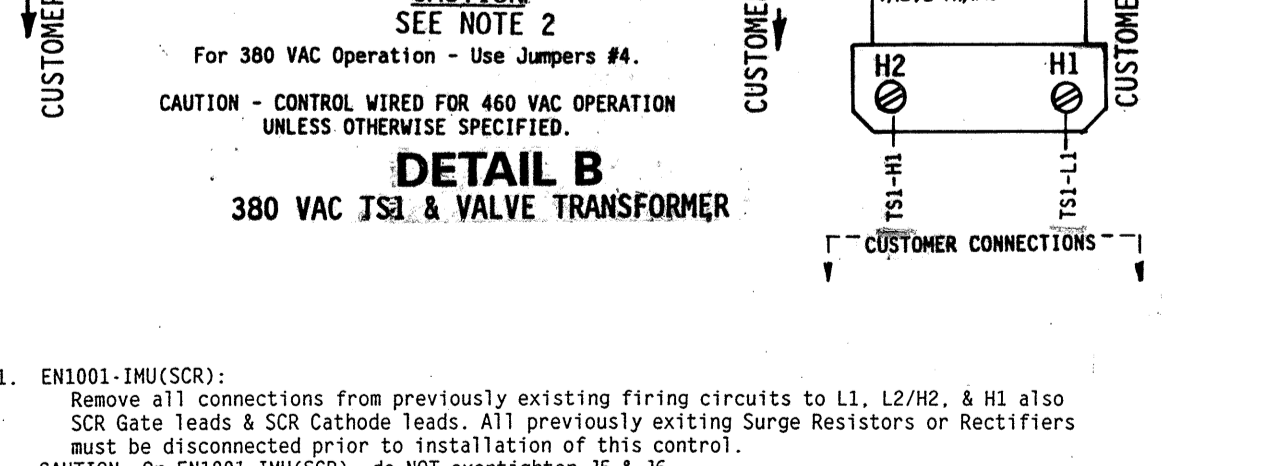
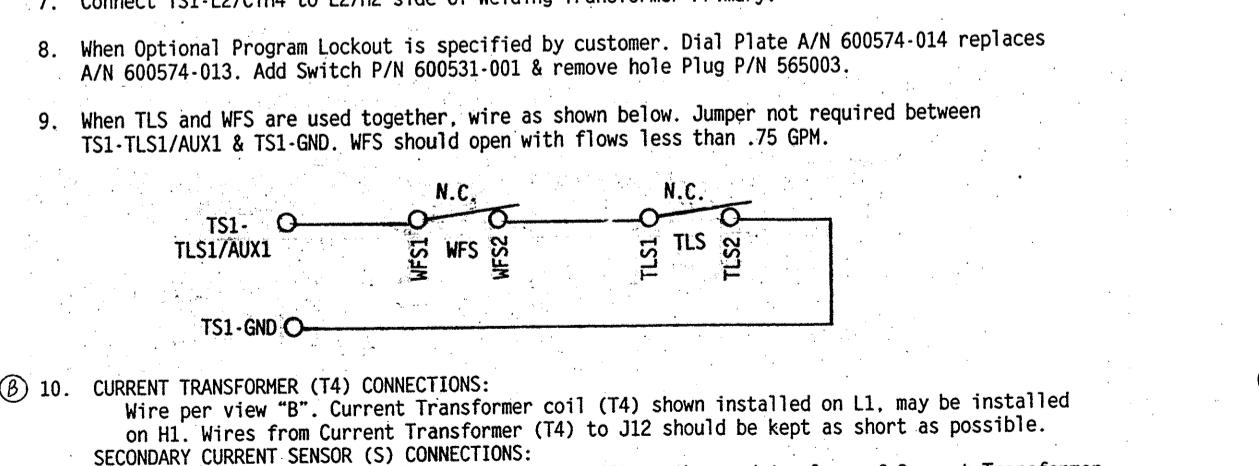
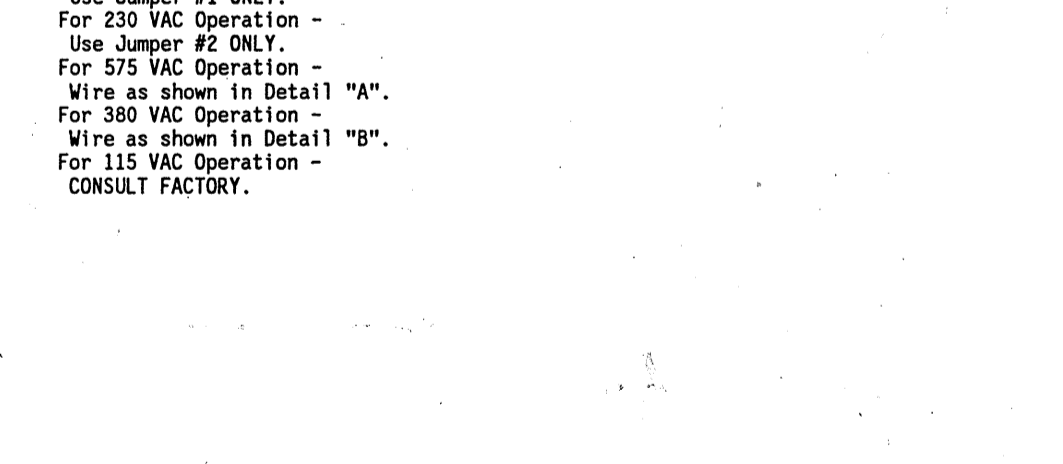
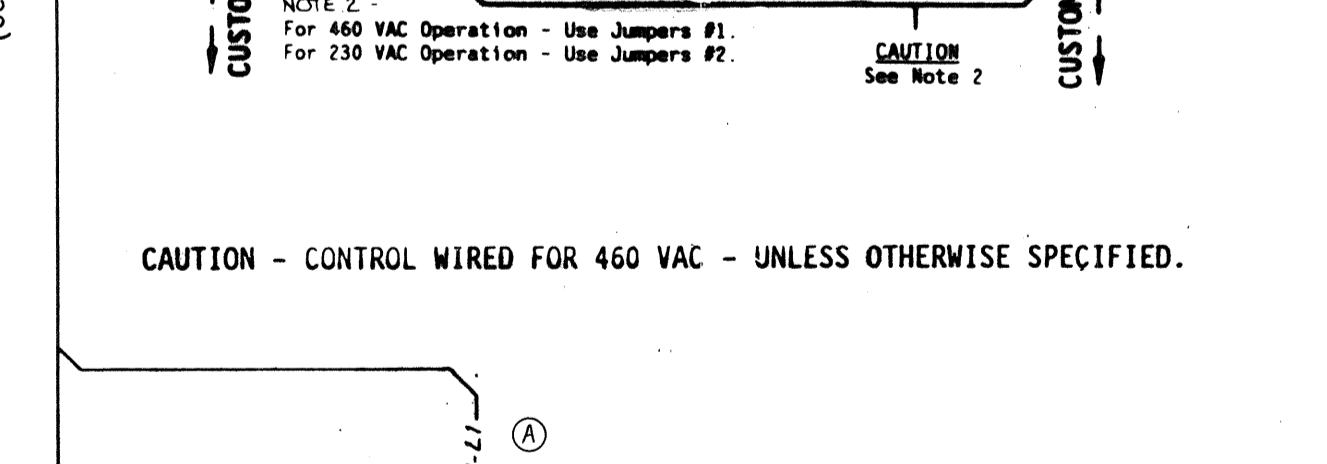
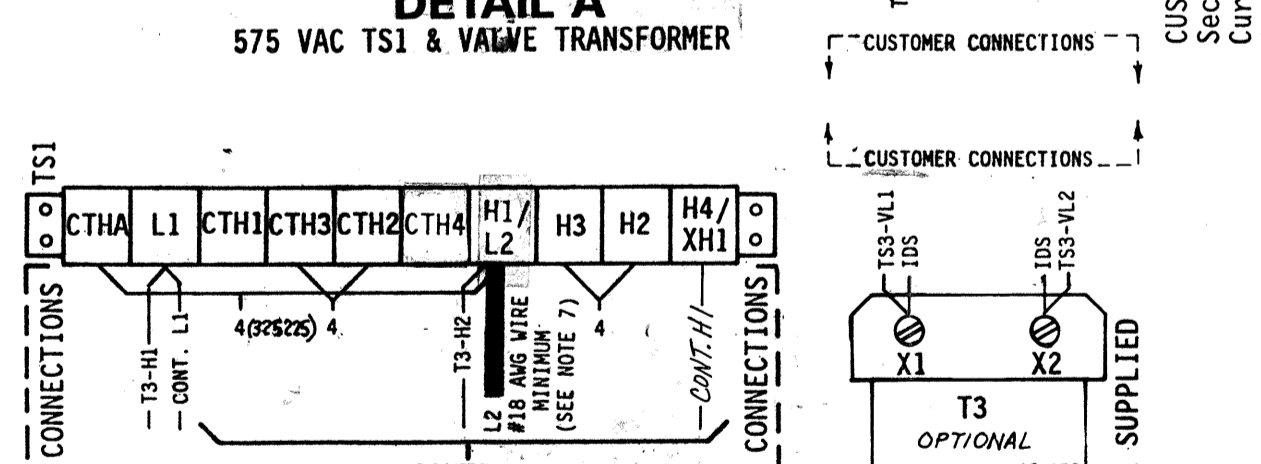
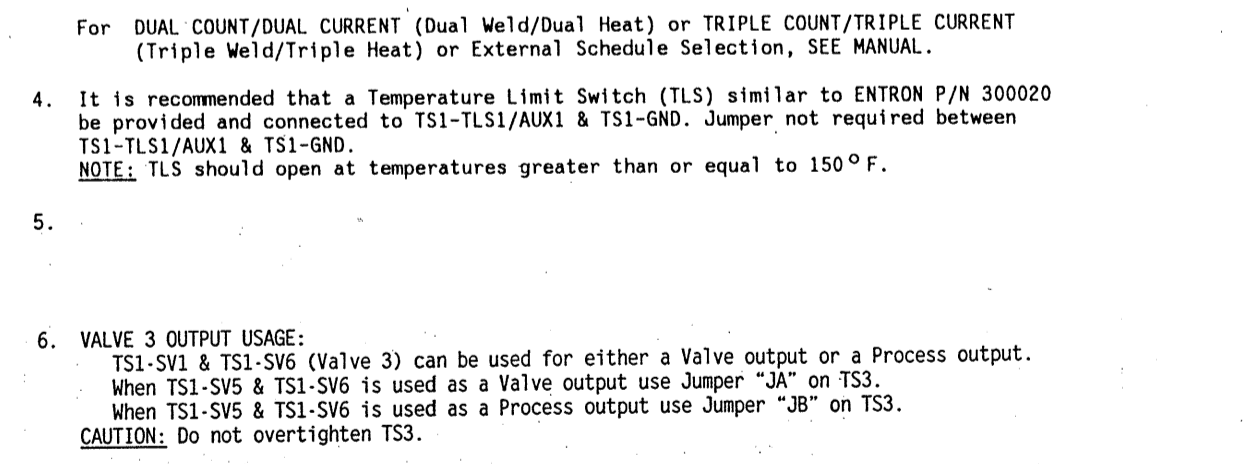
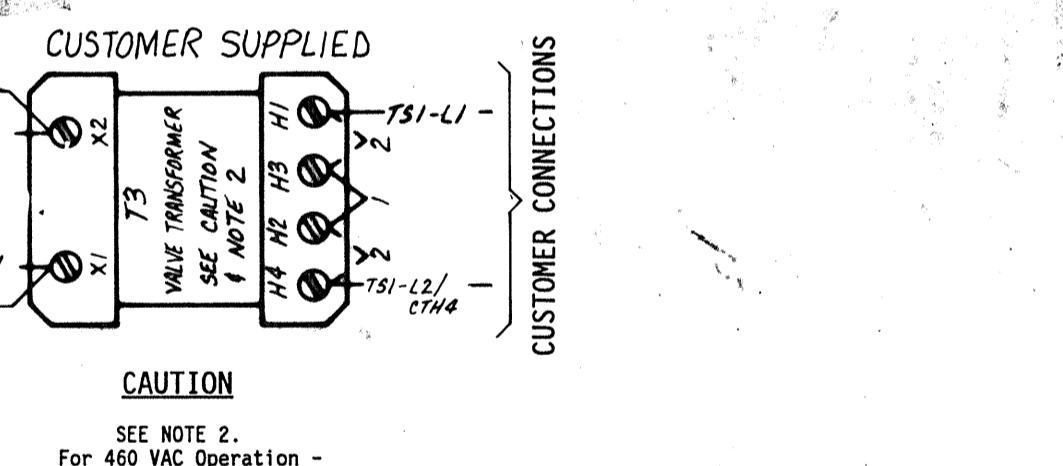
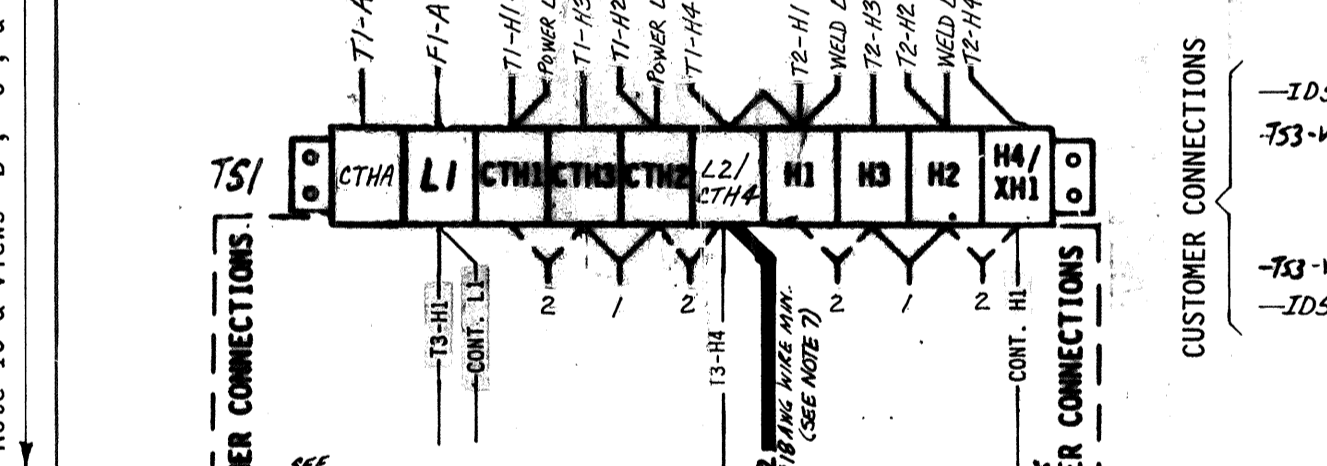
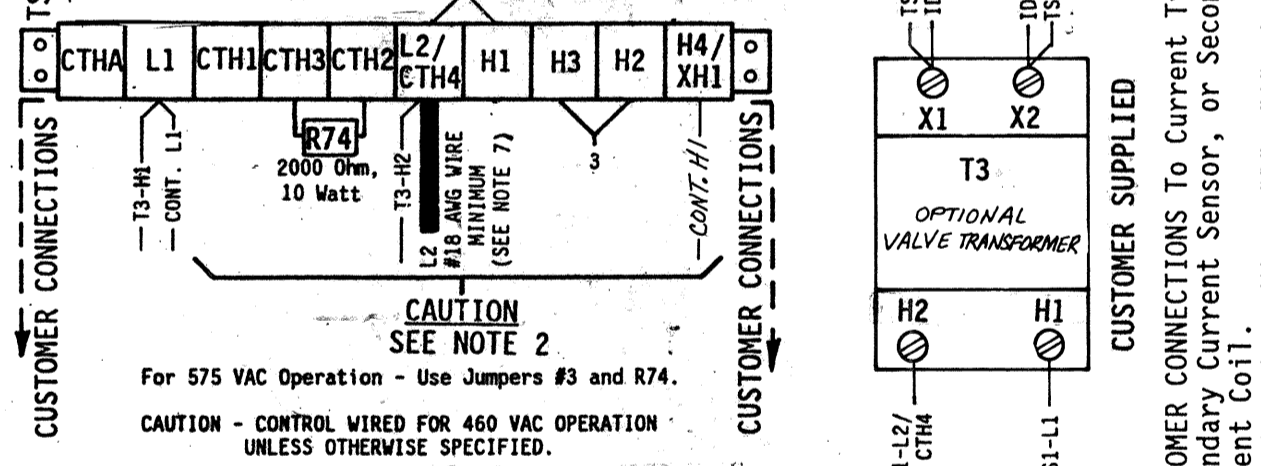
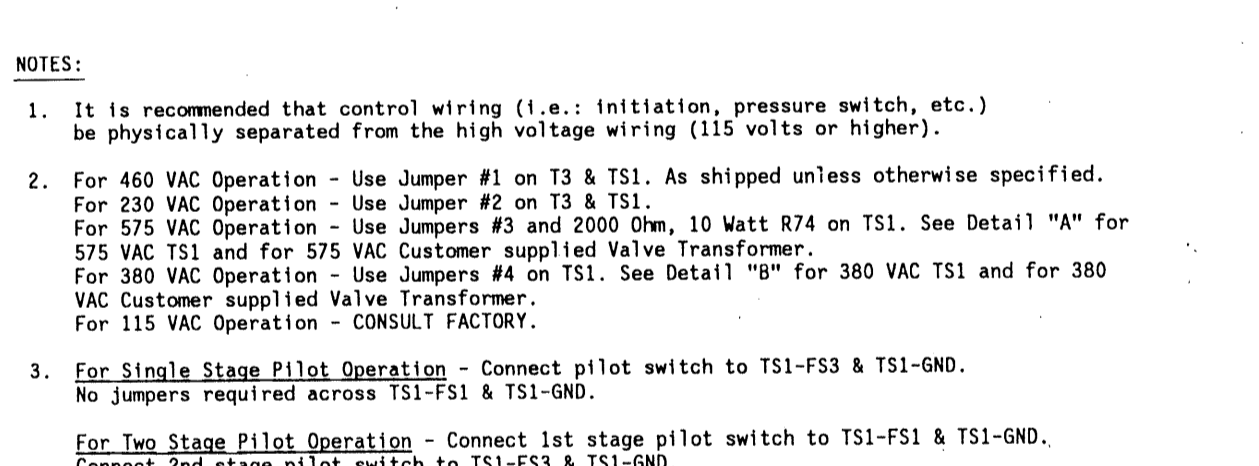
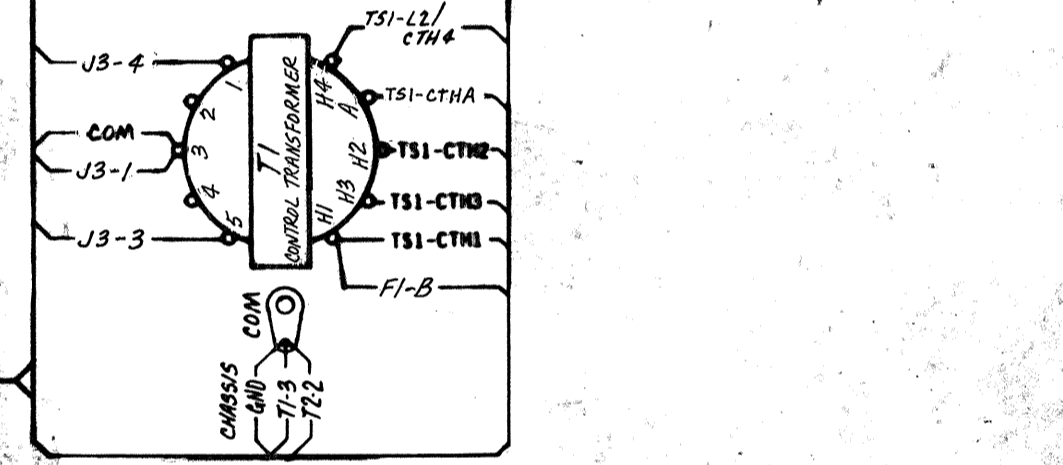
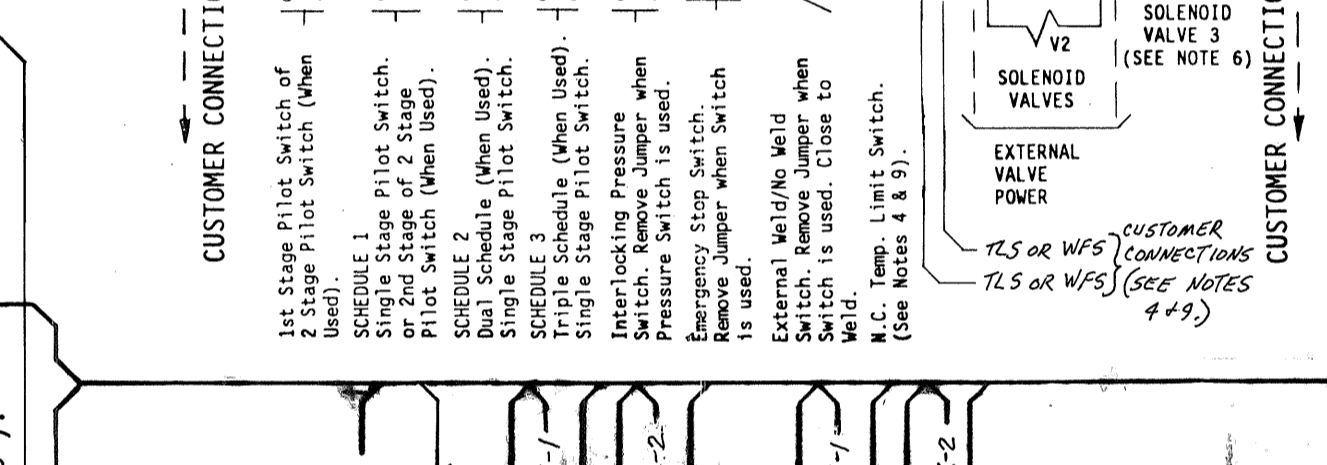
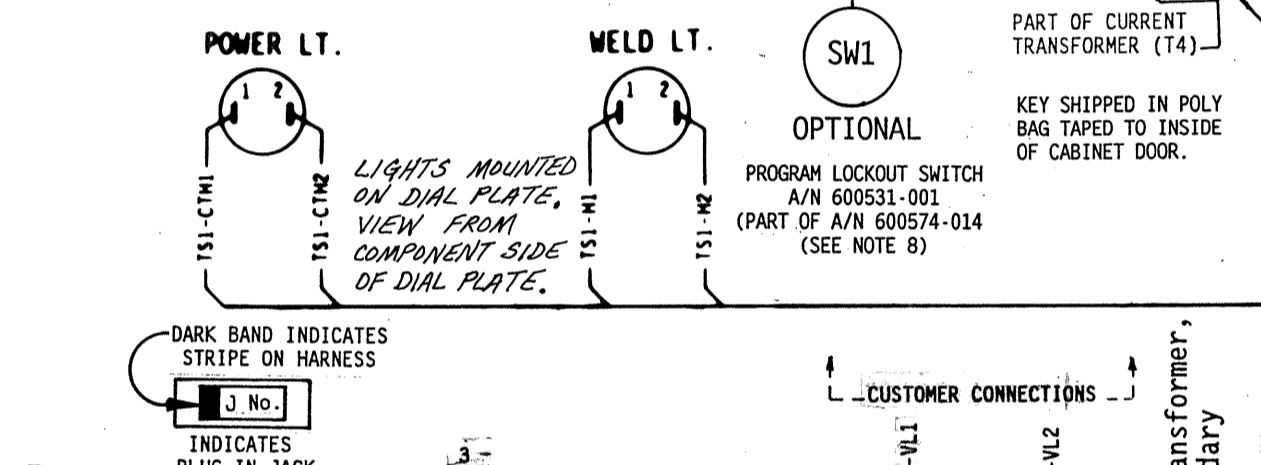
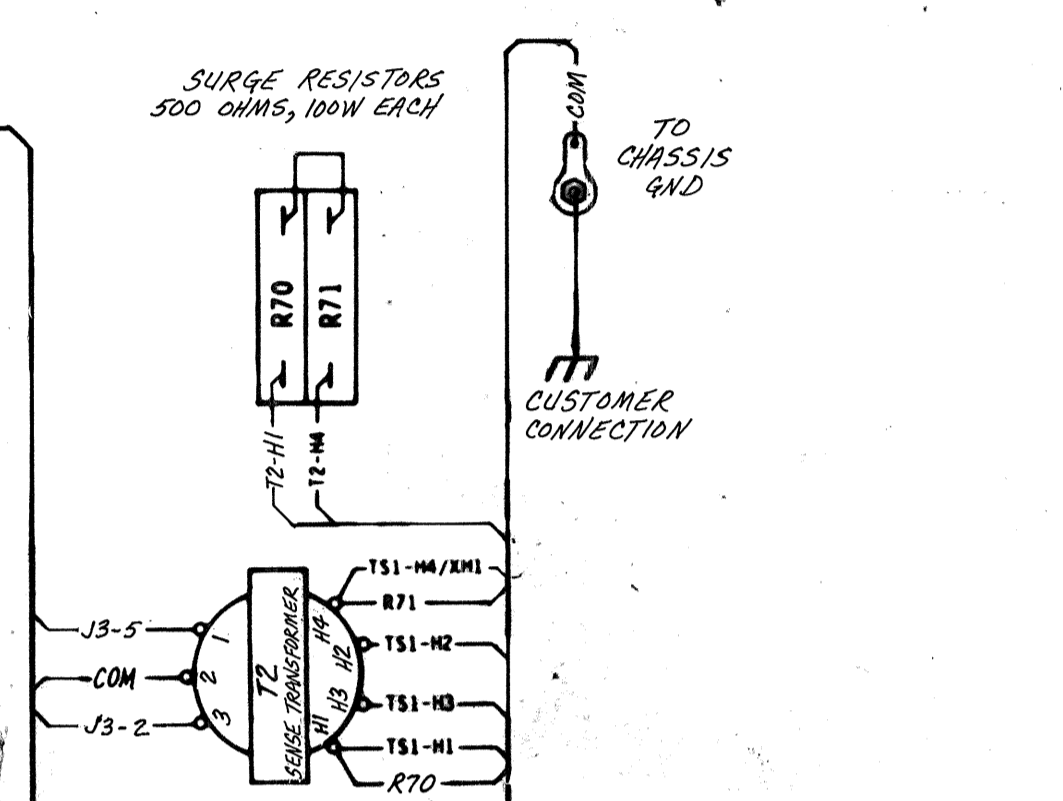
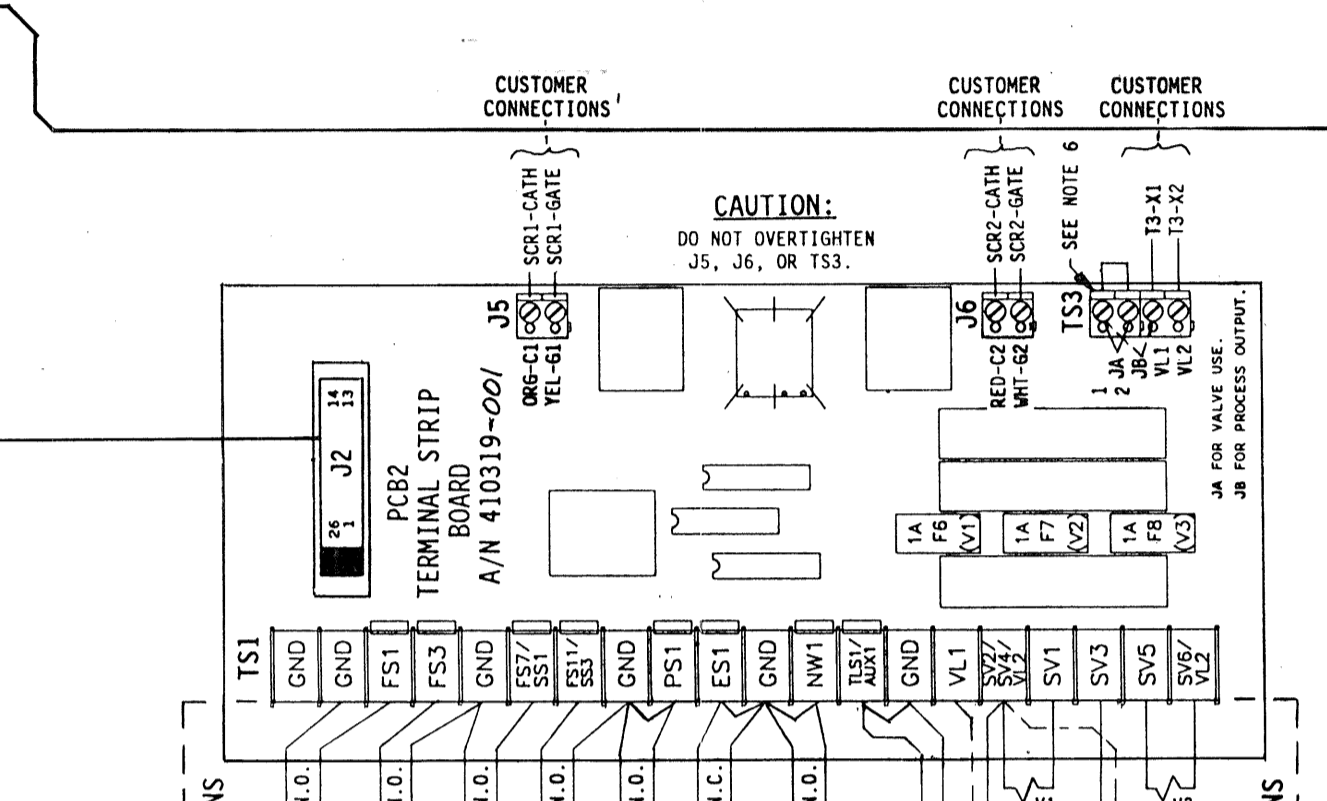
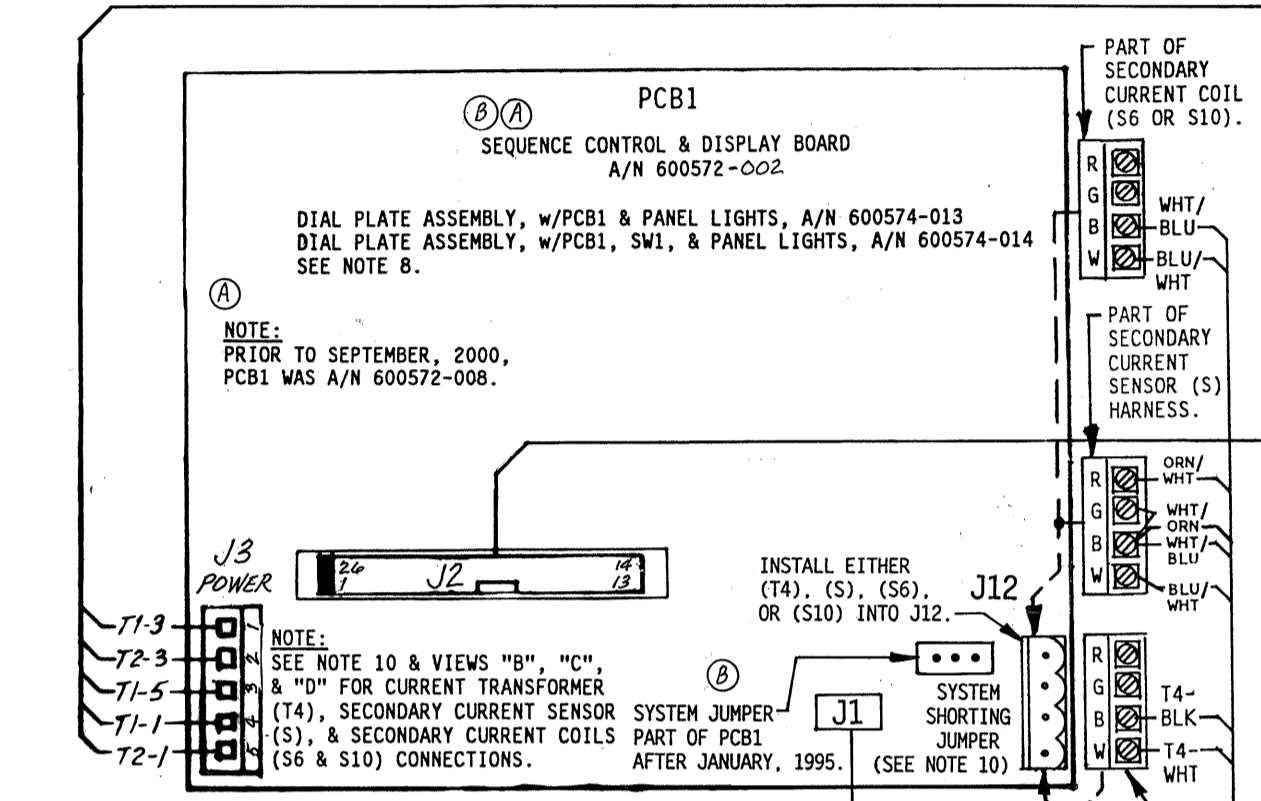
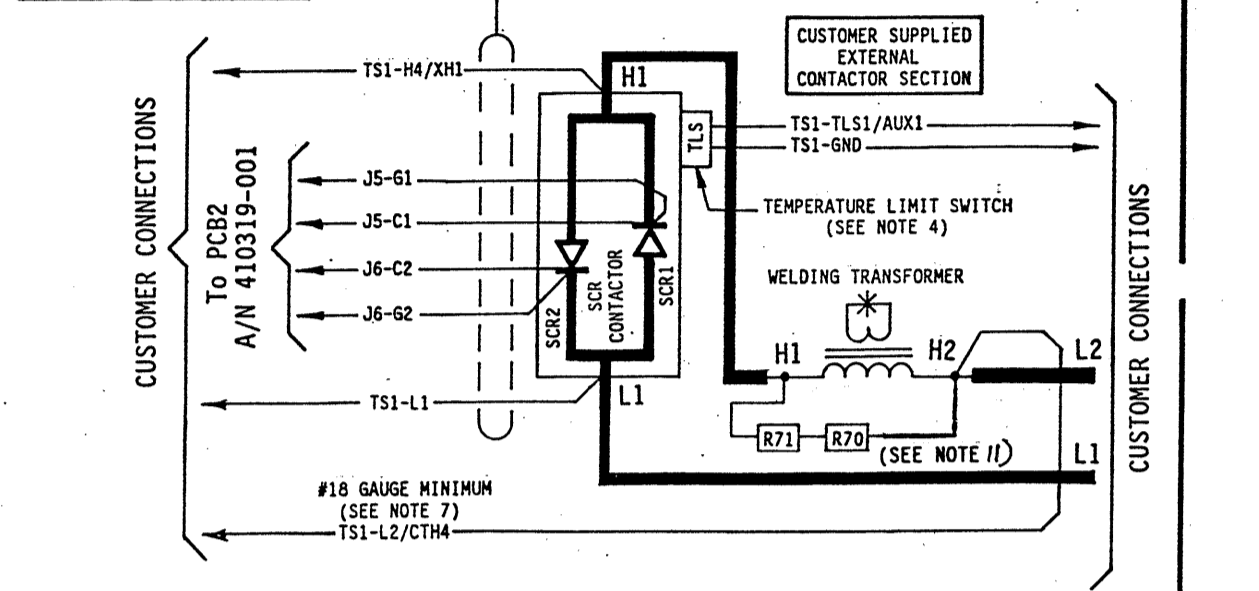
PARTS LIST - CONTROL SECTION. Table with columns: QTY., DESIG., PART NO., DESCRIPTION. Lists components like PCB1 SW1, J2-J3, and PWR.LT.

PARTS LIST - CONTACTOR SECTION

PARTS LIST - CONTACTOR SECTION. Table with columns: QTY., DESIG., PART NO., DESCRIPTION. Lists components like TS1, T1, T2, R70, R71, R81, F1, F11, F12, PCB2, T4, J12-J16, S6, S10, J12-J16.

TYPICAL CONNECTIONS FOR CUSTOMER SUPPLIED CONTACTORS.

PCB2 MOUNTED ON INTEGRATED MODULE UNIT PLATE EN1001-IMU(SCR)



Optional keylock when specified by customer. See Note 6. Pack Key in Poly Bag P/N 900148 & attach to inside of Dial Plate w/Yellow Tape P/N 900118. See Current Sensing Coil/Sensor Application Chart. See Drawing #440450-004 for mounting detail of Integrated Modular Unit (IMU). Tape one (1) Poly Bag P/N 900148 to Integrated Modular Unit (IMU) using Tape P/N 900118, & include the following in the bag: 4 Each #6-32 x 1/4" PHMS, Phil., Black. P/N 557004.

MANUFACTURING INSTRUCTIONS: See Drawing #600526 for Layout/Assembly of Front Panel. See Drawing #600674 for Mechanical Assembly Instructions. See Drawing #440480 for Packing Instructions. See Drawing #440457 for Current Transformer Assembly. See Drawing #440458 for Secondary Current Sensor Assembly.

Table with columns: REV, AUTH, DESCRIPTION, DRWN BY, DATE, CHKD BY, DATE. Includes revision history and drawing information.

NOTICE FOR SERVICE ON THIS CONTROL. Contact Your Machine Dealer Or ENTRON CONTROLS INC. DIRECTLY: (630) 682-9000. 485 EAST RANDY ROAD CAROL STREAM, IL 60188 FAX # (630) 682-3374.