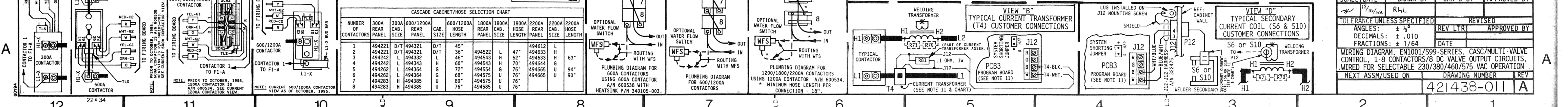
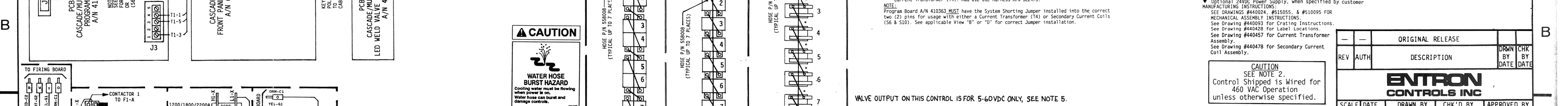
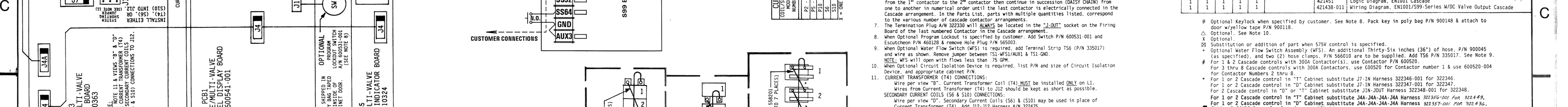
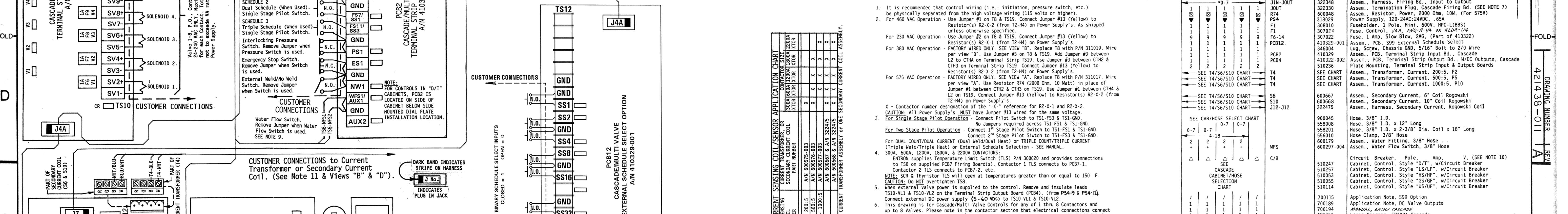
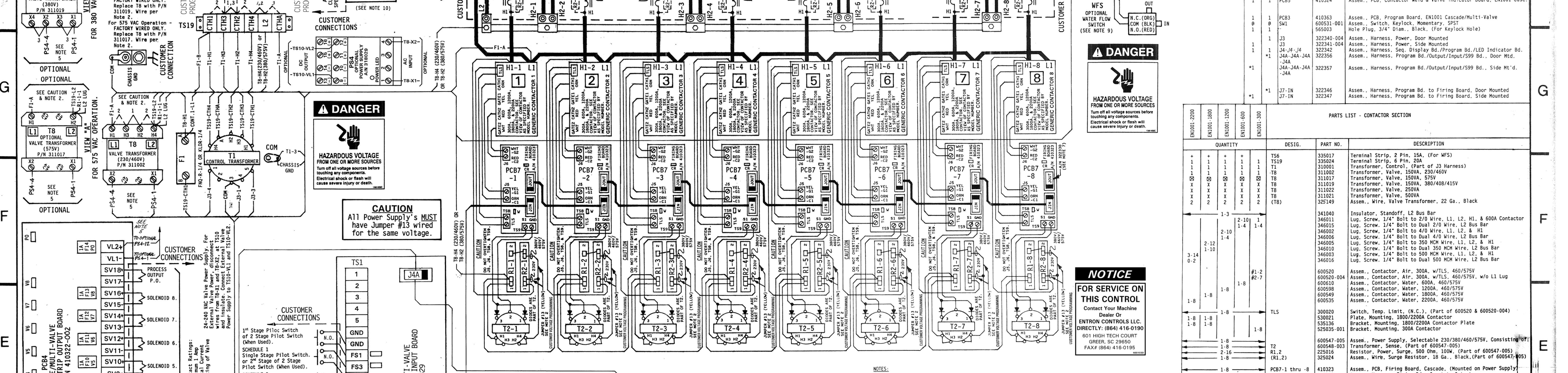


CAUTION - READ MANUAL & ALL NOTES BEFORE INSTALLING OR OPERATING CONTROL - SEE NOTE 1. NO CIRCUIT CALIBRATION OR ADJUSTMENT EVER REQUIRED.



421438-011 A

QUANTITY	DESIG.	PART NO.	DESCRIPTION	
1	PCB1	600685	Assem. Dial Plate, EN1001 Cascade, Consisting of:	
1	1	600541-001	Assem. Switch, Front Panel Display Board	
1	1	515096	Illustrated Panel, EN1001 Cascade/Multi-Valve	
1	1	515096	Display Window, Panel, Red Filter, Cont. Valve, EN1001 Cascade	
1	1	515104	Display Window, Panel, Red Filter, LED, EN1001 Cascade	
1	1	410324	Assem. PCB, Contactor Weld & Valve Indicator Casc.	
1	1	PCB3	410363	Assem. PCB, Program Board, EN1001 Cascade/Multi-Valve
1	1	600531-001	Assem. Switch, Keylock, Momentary, SPST	
1	1	565003	Hole Plug, 3/4" Dia., Black, (For Keylock Hole)	
1	1	J33	322340-004	Assem. Harness, Power, Door Mounted
1	1	J33	322341-004	Assem. Harness, Power, Side Mounted
1	1	J44-J44-J44	322342	Assem. Harness, Smt. Display Bd./Program Bd./LED Indicator Bd.
1	1	J44-J44-J44	322356	Assem. Harness, Program Bd./Output/599 Bd., Door Mtd.
1	1	J44-J44-J44	322357	Assem. Harness, Program Bd./Output/599 Bd., Side Mtd.
1	1	J7-IN	322346	Assem. Harness, Program Bd. to Firing Board, Door Mounted
1	1	J7-IN	322347	Assem. Harness, Program Bd. to Firing Board, Side Mounted

PARTS LIST - CONTACTOR SECTION

QUANTITY	DESIG.	PART NO.	DESCRIPTION
1	T56	335017	Terminal Strip, 2 Pin, 15A, (For WFS)
1	T56	335024	Terminal Strip, 6 Pin, 20A
1	T56	310002	Transformer, Control, (Part of J3 Harness)
1	T8	311002	Transformer, Valve, 150VA, 230/460V
1	T8	311017	Transformer, Valve, 150VA, 575V
1	T8	311019	Transformer, Valve, 150VA, 380/460/415V
1	T8	311022	Transformer, Valve, 250VA
1	T8	311021	Transformer, Valve, 500VA
1	T8	325149	Assem. Wire, Valve Transformer, 22 Ga., Black
1	T8	341040	Insulator, Standoff, L2 Bus Bar
1	T8	346011	Lug, Screw, 1/4" Bolt to 2/0 Wire, L1, L2, H1, & 600A Contactor
1	T8	346015	Lug, Bolt to Dual 2/0 Wire, L2 Bus Bar
1	T8	346021	Lug, Screw, 1/4" Bolt to 4/0 Wire, L1, L2, & H1
1	T8	346006	Lug, Screw, 1/4" Bolt to 4/0 Wire, L2 Bus Bar
1	T8	346005	Lug, Screw, 1/4" Bolt to 350 MCM Wire, L1, L2, & H1
1	T8	346010	Lug, Screw, 1/4" Bolt to Dual 350 MCM Wire, L2 Bus Bar
1	T8	346003	Lug, Screw, 1/4" Bolt to 500 MCM Wire, L1, L2, & H1
1	T8	346016	Lug, Screw, 1/4" Bolt to Dual 500 MCM Wire, L2 Bus Bar
1	T8	600520	Assem. Contactor, Afr. 300A, w/TL5, 460/575V
1	T8	600520-004	Assem. Contactor, Afr. 300A, w/TL5, 460/575V, w/o L1 Lug
1	T8	600610	Assem. Contactor, Water, 600A, 460/575V
1	T8	600598	Assem. Contactor, Water, 1200A, 460/575V
1	T8	600549	Assem. Contactor, Water, 1800A, 460/575V
1	T8	600535	Assem. Contactor, Water, 2200A, 460/575V
1	TLS	300020	Switch, Temp. Limit, (N.C.), (Part of 600520 & 600520-004)
1	TLS	530021	Bracket, Mounting, 1800/2200A Contactor
1	TLS	531336	Bracket, Mounting, 300A Contactor
1	TLS	525035-001	Assem. Power Supply, Selectable 230/380/460/575V, Consisting of:
1	T2	600548-003	Transformer, Sense, (Part of 600547-005)
1	T4	531029	Power Supply, 120/240/240V, 65A
1	T4	325024	Assem. Wire, Surge Resistor, 18 Ga., Black, (Part of 600547-005)
1	JIN-JOUT	410323	Assem. PCB, Firing Board, Cascade, (Mounted on Power Supply)
1	JOUT	322348	Assem. Harness, Firing Bd., Input to Output
1	R74	322330	Assem. Termination Plug, Cascade Firing Bd. (SEE NOTE 7)
1	F1	600048	Assem. Resistor, Power, 2000 Ohm, 10W, (For 575V)
1	F1	310029	Power Supply, 120/240/240V, 65A
1	F1	308010	Fuseholder, 1 Pole, Mini, 600V, HPC-1(BBS)
1	F1	307024	Fuse, Control, 1/4", 1/2", 3/4", 1", 2", 3", 4", 5A
1	F1	307022	Fuse, 1 Amp, Slow Blow, 2A6, (Part of 410323)
1	PCB2	410322-001	Assem. PCB, S99 External Schedule Select
1	PCB2	342004	Lug, Screw, Chassis GND, 5/16" Bolt to 2/0 Wire
1	PCB2	410323	Assem. PCB, Terminal Strip Input Bd., Cascade
1	PCB4	410322-002	Assem. PCB, Terminal Strip Output Bd., W/DC Outputs, Cascade
1	PCB4	510236	Plate Mounting, Terminal Strip Input & Output Boards
1	T4	SEE T4/S6/S10 CHART	Assem. Transformer, Current, 200V, P2
1	T4	SEE T4/S6/S10 CHART	Assem. Transformer, Current, 500V, P5
1	T4	SEE T4/S6/S10 CHART	Assem. Transformer, Current, 1000V, P2
1	S6	600657	Assem. Secondary Current, 6" Coil Rogowski
1	S6	600668	Assem. Secondary Current, 10" Coil Rogowski
1	J12-J12	322475	Assem. Harness, Secondary Current, Rogowski Coil
1	H0SE	900045	Assem. Water Flow Switch, 3/8" Hose
1	H0SE	588008	Hose, 3/8" I.D., x 12' Long
1	H0SE	588021	Hose, 3/8" I.D. x 2-3/8" Dia. Coil x 18" Long
1	H0SE	556010	Hose Clamp, 3/8" Hose
1	H0SE	600179	Assem. Water Fitting, 3/8" Hose
1	H0SE	600297-004	Assem. Water Flow Switch, 3/8" Hose
1	C/B	510247	Circuit Breaker, Pole Amp, V. (SEE NOTE 10)
1	C/B	510257	Circuit Breaker, Style "L5/LF", w/Circuit Breaker
1	C/B	510053	Circuit Breaker, Style "HS/HF", w/Circuit Breaker
1	C/B	510055	Circuit Breaker, Style "GS/GF", w/Circuit Breaker
1	C/B	510114	Circuit Breaker, Style "HS/HF", w/Circuit Breaker
1	C/B	700115	Application Note, 599 Option
1	C/B	700189	Application Note, DC Valve Outputs
1	C/B	700194	MANUAL, 6000A CASCADE
1	C/B	421451	Logic Diagram, EN1001 Cascade
1	C/B	421438-011	Wiring Diagram, EN1001/599-Series W/DC Valve Output Cascade

0 Optional Keylock when specified by customer. See Note 8. Pack key in poly bag P/N 900148 & attach to door w/yellow tape P/N 900118.

1 Optional. See Note 10.

2 Optional.

3 Substitution or addition of part when 575V control is specified.

4 Optional Water Flow Switch Assembly (WFS). An additional Tertiary Six inches (36") of hose, P/N 900045 (as specified), and two (2) hose clamps, P/N 556010 are to be supplied. Add T56 P/N 335017. See Note 9.

5 For 1 & 2 Cascade controls with 300A Contactor(s), use Contactor P/N 600520.

6 For 3 thru 8 Cascade controls with 300A Contactor(s), use Contactor for Contactor number 1 & use 600520-004 for Contactor Numbers 2 thru 8.

7 For 1 or 2 Cascade control in "T" Cabinet substitute J7-IN Harness 322346-001 for 322346.

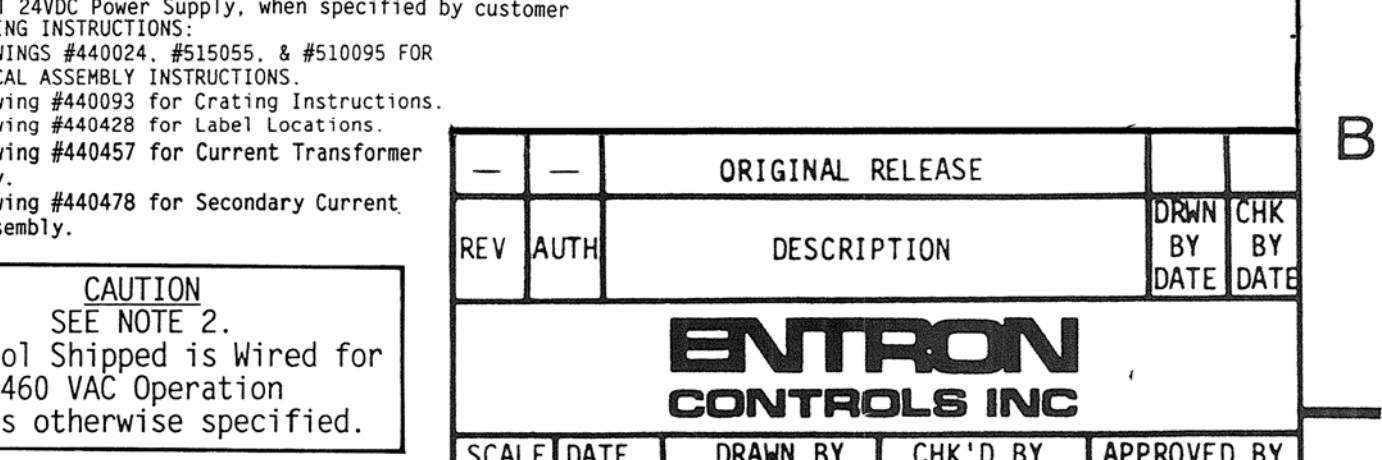
8 For 1 or 2 Cascade control in "D" Cabinet substitute J7-IN Harness 322347-001 for 322347.

9 For 2 Cascade control in "D" or "T" Cabinet substitute J3IN-3007 Harness 322348-001 for 322348.

10 For 1 or 2 Cascade control in "T" Cabinet substitute J44-J44-J44-J44 Harness 322356-001 for 322356.

11 For 1 or 2 Cascade control in "D" Cabinet substitute J44-J44-J44-J44 Harness 322357-001 for 322357.

12 Optional 24VDC Power Supply, when specified by customer.



CAUTION SEE NOTE 2. Control Shipped is wired for 460 VAC Operation unless otherwise specified.

REV	AUTH	DESCRIPTION	DRWN	CHK'D	BY	DATE	DATE

SCALE DATE: 12/10/03

TOLERANCE UNLESS SPECIFIED: ANGLES: ± .010; DECIMALS: ± 1/64

WIRING DIAGRAM, EN1001/599-SERIES, CASC/MULTI-VALVE CONTROL - 1-B CONTACTORS W/ DC VALVE OUTPUT CIRCUITS - WIRED FOR SELECTABLE 230/380/460/575 VAC OPERATION

NEXT ASSM/USED ON: 421438-011 A