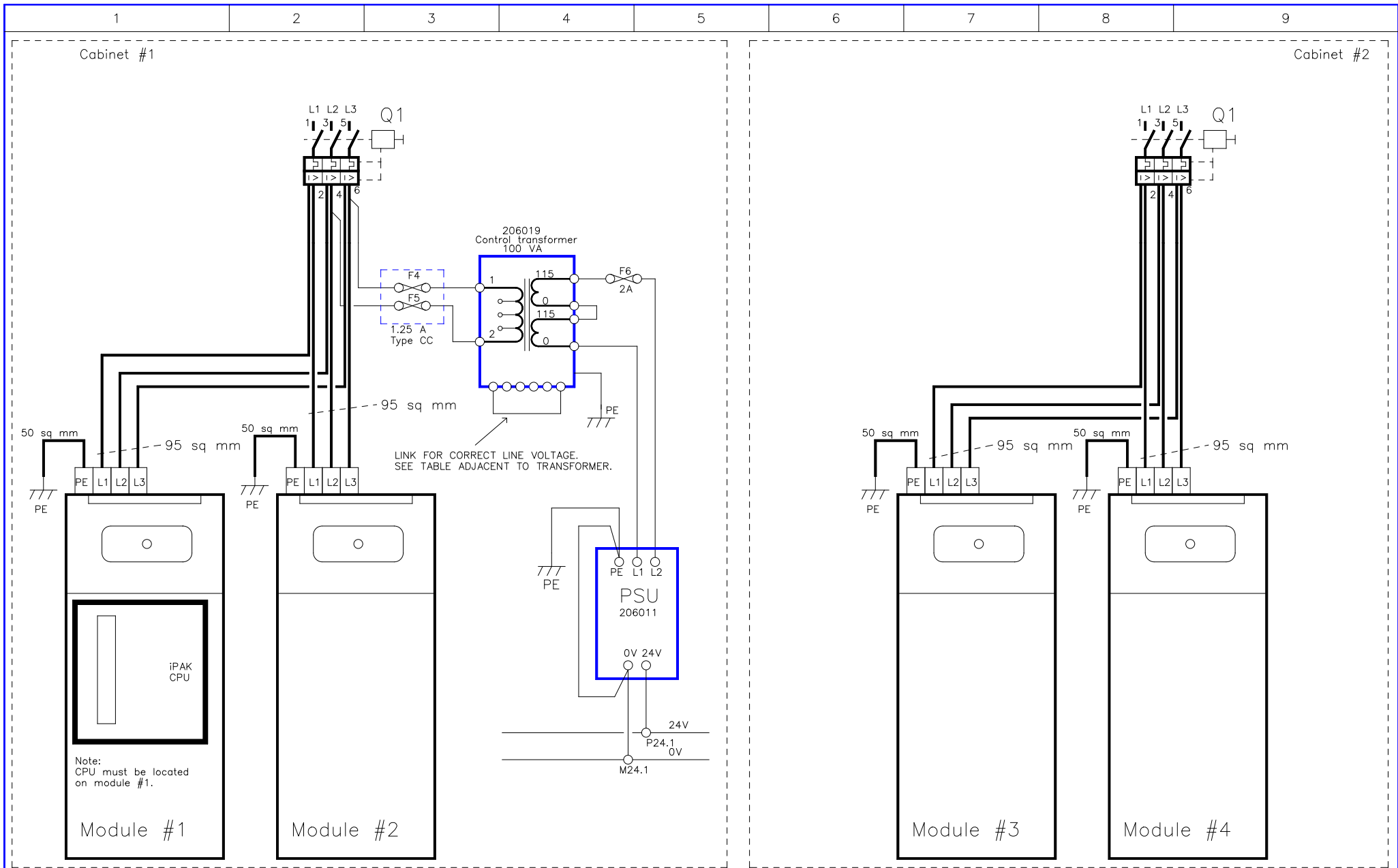


DATE:	24-10-17
DRAWN:	
CHECKED:	

BF ENTRON LTD

TITLE: iPAK LMI 6k CABINET WIRING

DRAWING No:	3U3588
ISSUE No:	5
SHEET No:	1 of 5



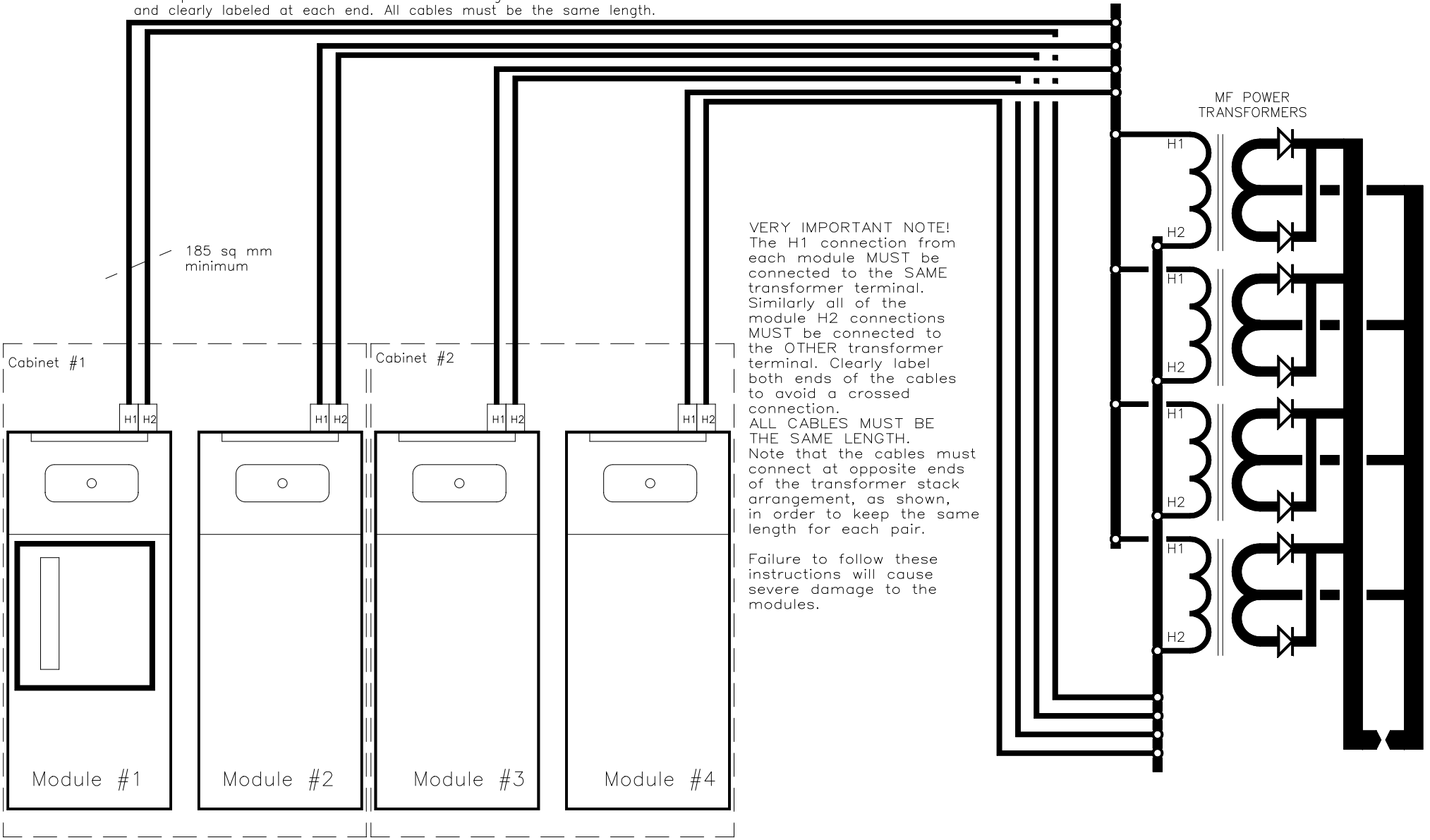
DATE:	24-10-17
DRAWN:	
CHECKED:	

BF ENTRON LTD

TITLE: iPAK LMI 6k CABINET WIRING

DRAWING No:	3U3588
ISSUE No:	5
SHEET No:	2 of 5

Cable pairs to each module should be bound together and clearly labeled at each end. All cables must be the same length.



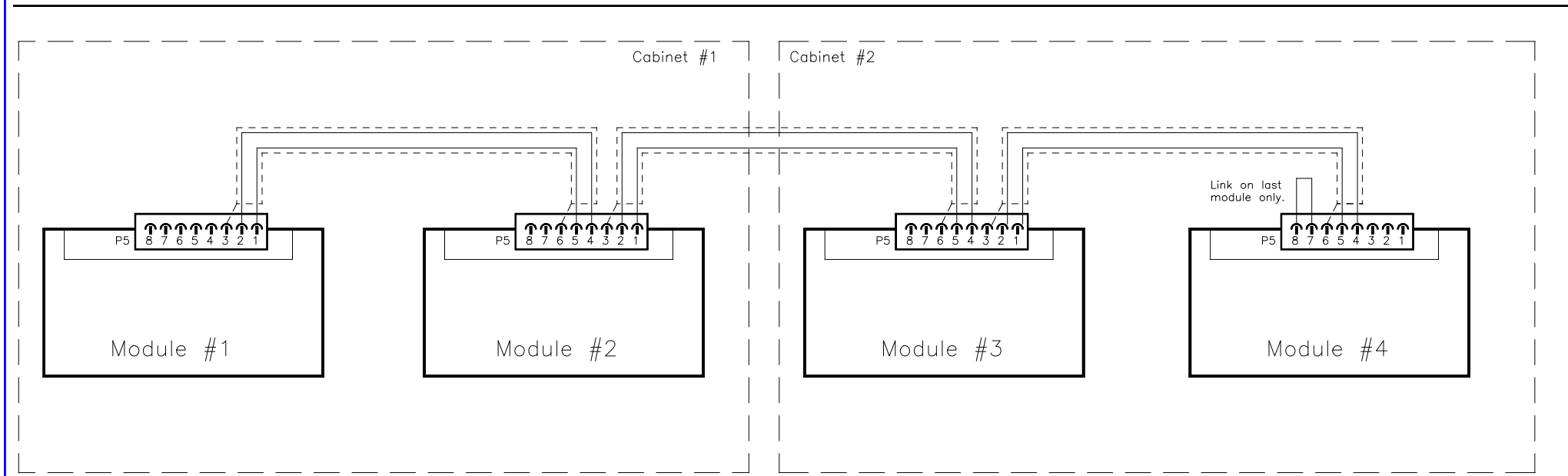
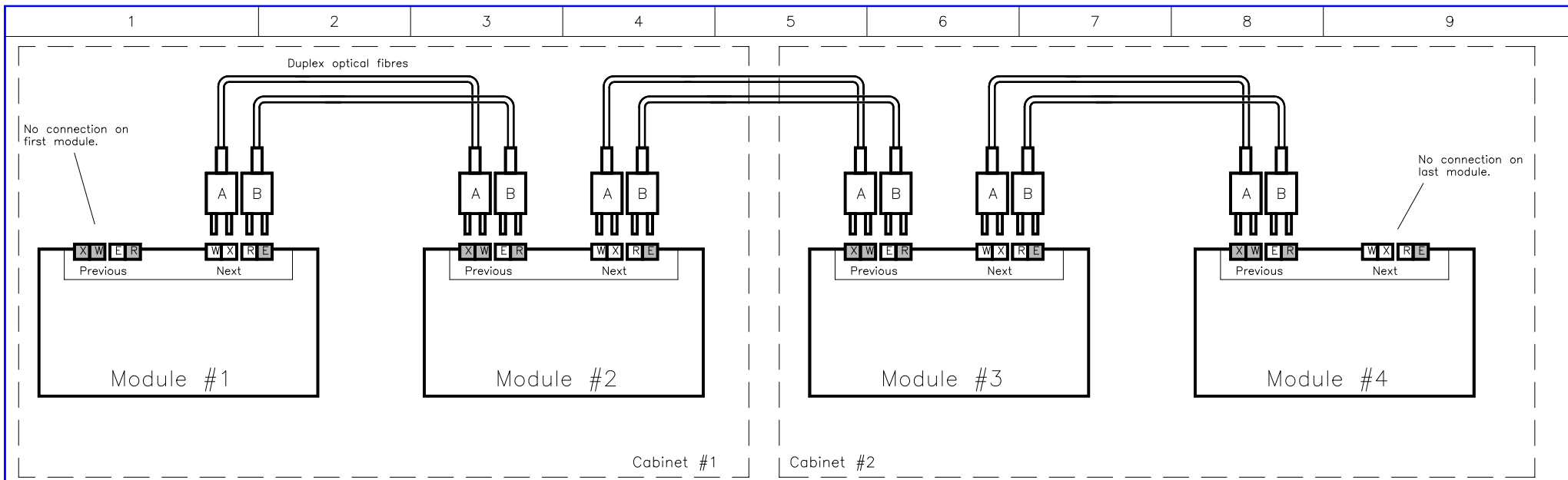
VERY IMPORTANT NOTE!
 The H1 connection from each module **MUST** be connected to the **SAME** transformer terminal. Similarly all of the module H2 connections **MUST** be connected to the **OTHER** transformer terminal. Clearly label both ends of the cables to avoid a crossed connection.
ALL CABLES MUST BE THE SAME LENGTH.
 Note that the cables must connect at opposite ends of the transformer stack arrangement, as shown, in order to keep the same length for each pair.
 Failure to follow these instructions will cause severe damage to the modules.

DATE:	24-10-17
DRAWN:	
CHECKED:	

BF ENTRON LTD

TITLE: iPAK LMI 6k CABINET WIRING

DRAWING No:	3U3588
ISSUE No:	5
SHEET No:	3 of 5

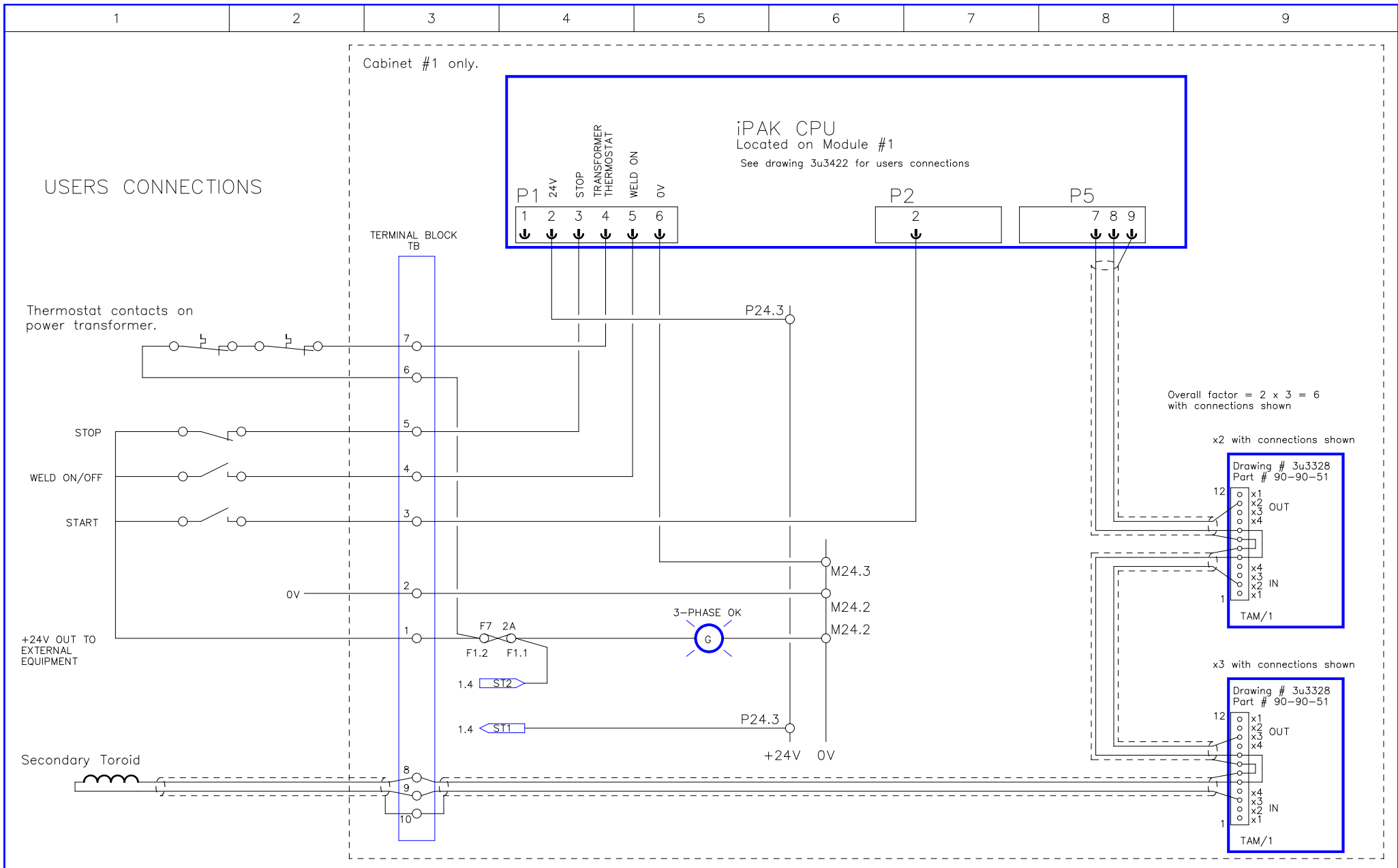


DATE:	24-10-17
DRAWN:	
CHECKED:	

BF ENTRON LTD

TITLE: iPAK LMI 6k CABINET WIRING

DRAWING No:	3U3588
ISSUE No:	5
SHEET No:	4 of 5



DATE:	24-10-17
DRAWN:	
CHECKED:	

BF ENTRON LTD

TITLE: **iPAK LMI 6k CABINET WIRING**

DRAWING No:	3U3588
ISSUE No:	5
SHEET No:	5 of 5