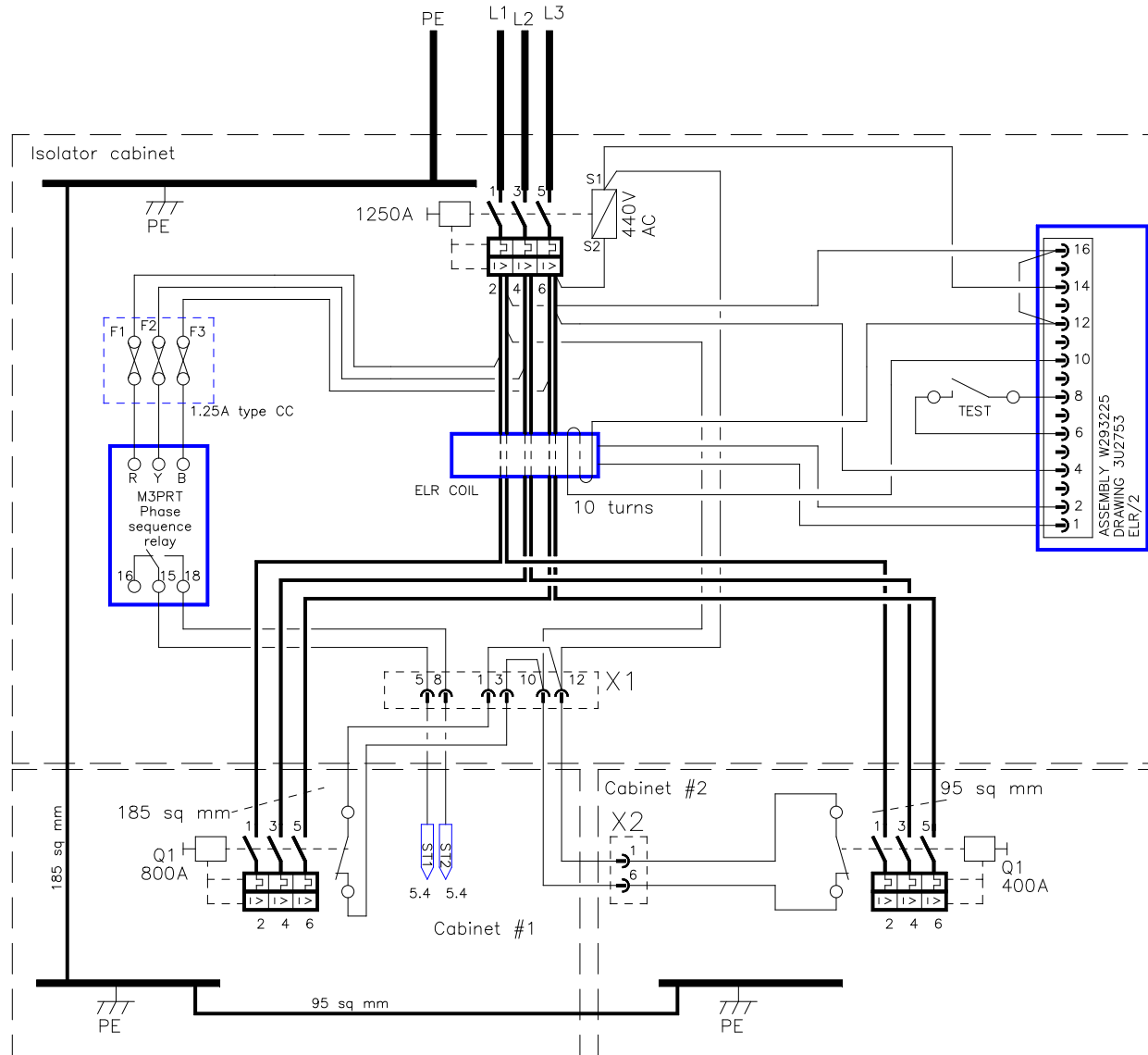


3-phase 480V max.



Note: MCCBs Q1 in each cabinet must be both switched on prior to closing the main MCCB which feeds them. Do not switch off either Q1 when main MCCB is on.

16
14
12
10
8
6
4
2
1

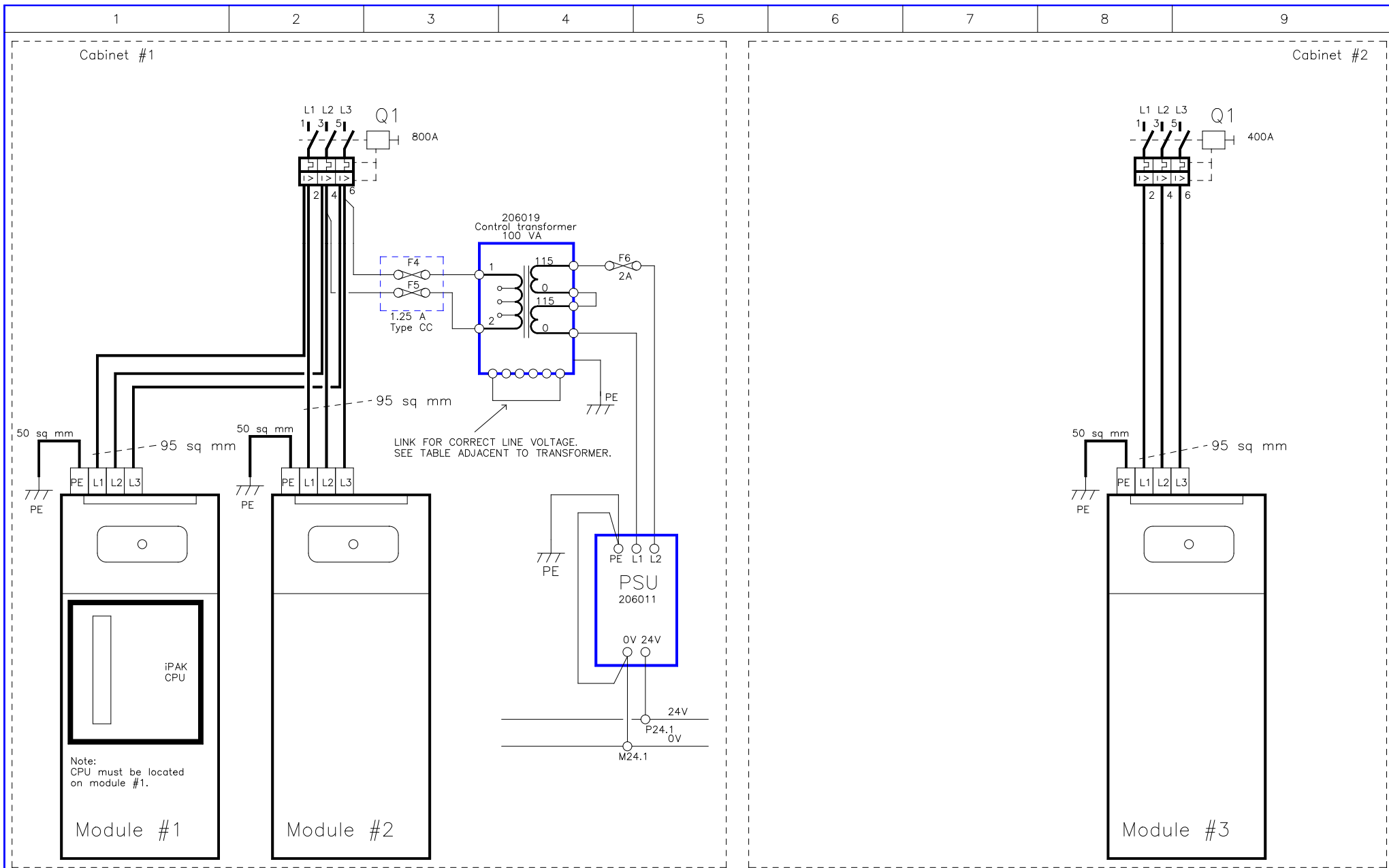
ASSEMBLY W293225
DRAWING 3U2753
ELR/2

DATE:	26-10-17
DRAWN:	
CHECKED:	

BF ENTRON LTD

TITLE: iPAK LMI 4k5 CABINET WIRING

DRAWING No:	3U3629
ISSUE No:	3
SHEET No:	1 of 5



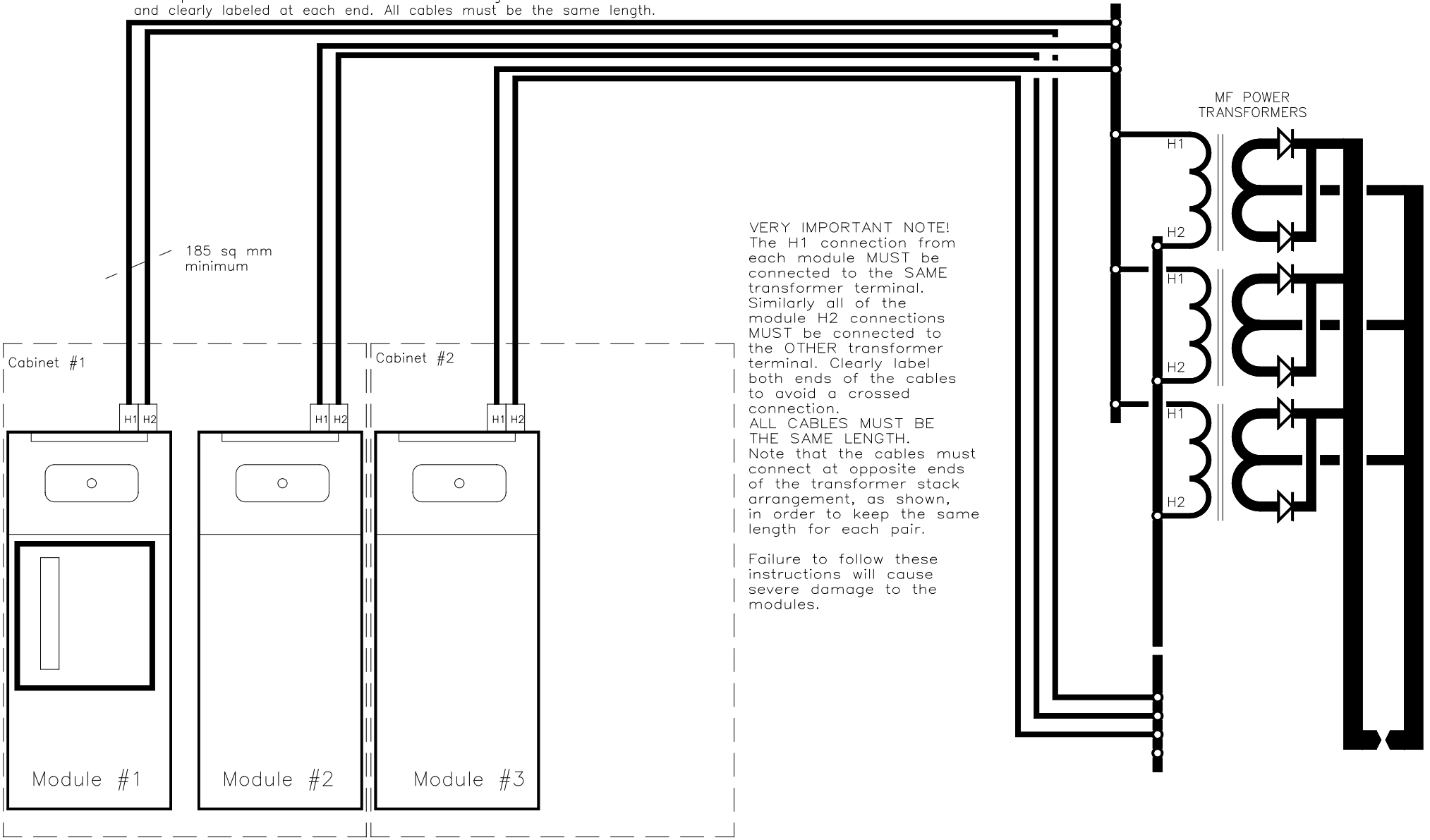
DATE:	26-10-17
DRAWN:	
CHECKED:	

BF ENTRON LTD

TITLE: iPAK LMI 4k5 CABINET WIRING

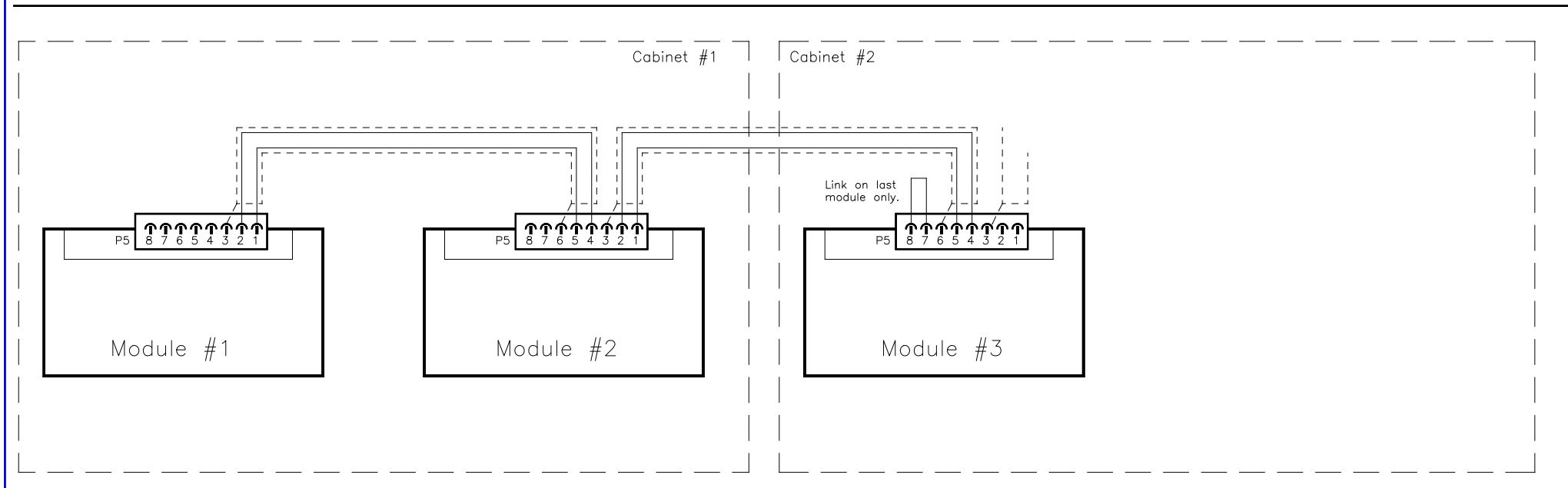
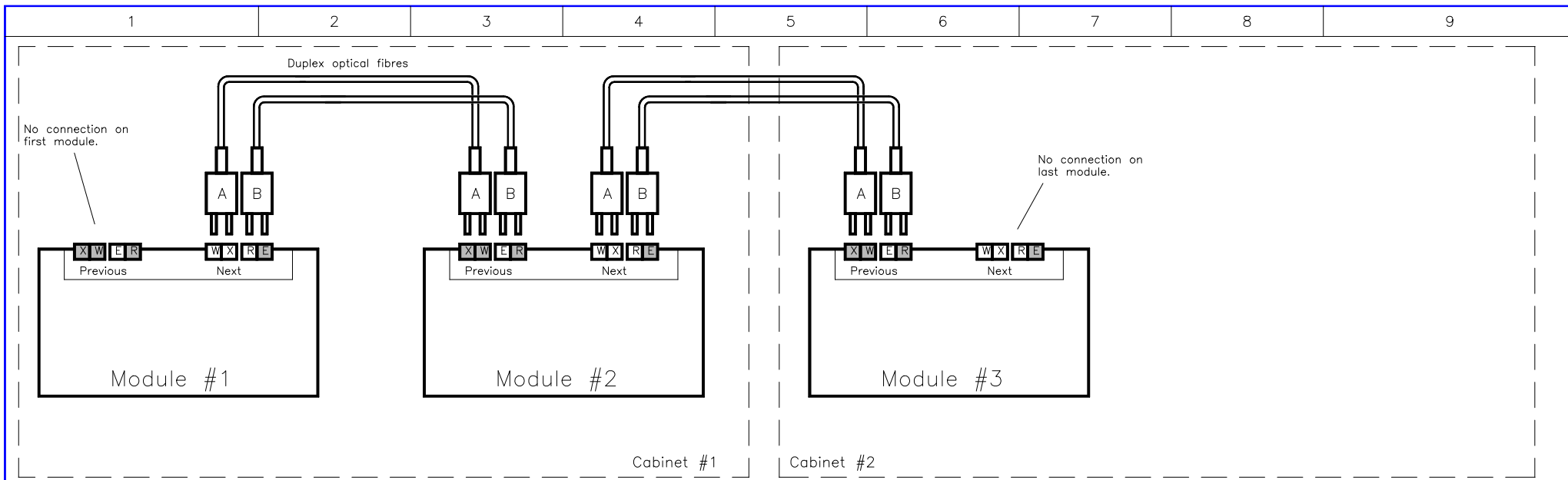
DRAWING No:	3U3629
ISSUE No:	3
SHEET No:	2 of 5

Cable pairs to each module should be bound together and clearly labeled at each end. All cables must be the same length.



VERY IMPORTANT NOTE!
 The H1 connection from each module **MUST** be connected to the **SAME** transformer terminal. Similarly all of the module H2 connections **MUST** be connected to the **OTHER** transformer terminal. Clearly label both ends of the cables to avoid a crossed connection.
ALL CABLES MUST BE THE SAME LENGTH.
 Note that the cables must connect at opposite ends of the transformer stack arrangement, as shown, in order to keep the same length for each pair.
 Failure to follow these instructions will cause severe damage to the modules.

DATE:	26-10-17	BF ENTRON LTD	TITLE:	iPAK LMI 4k5 CABINET WIRING	DRAWING No:	3U3629
DRAWN:					ISSUE No:	3
CHECKED:					SHEET No:	3 of 5

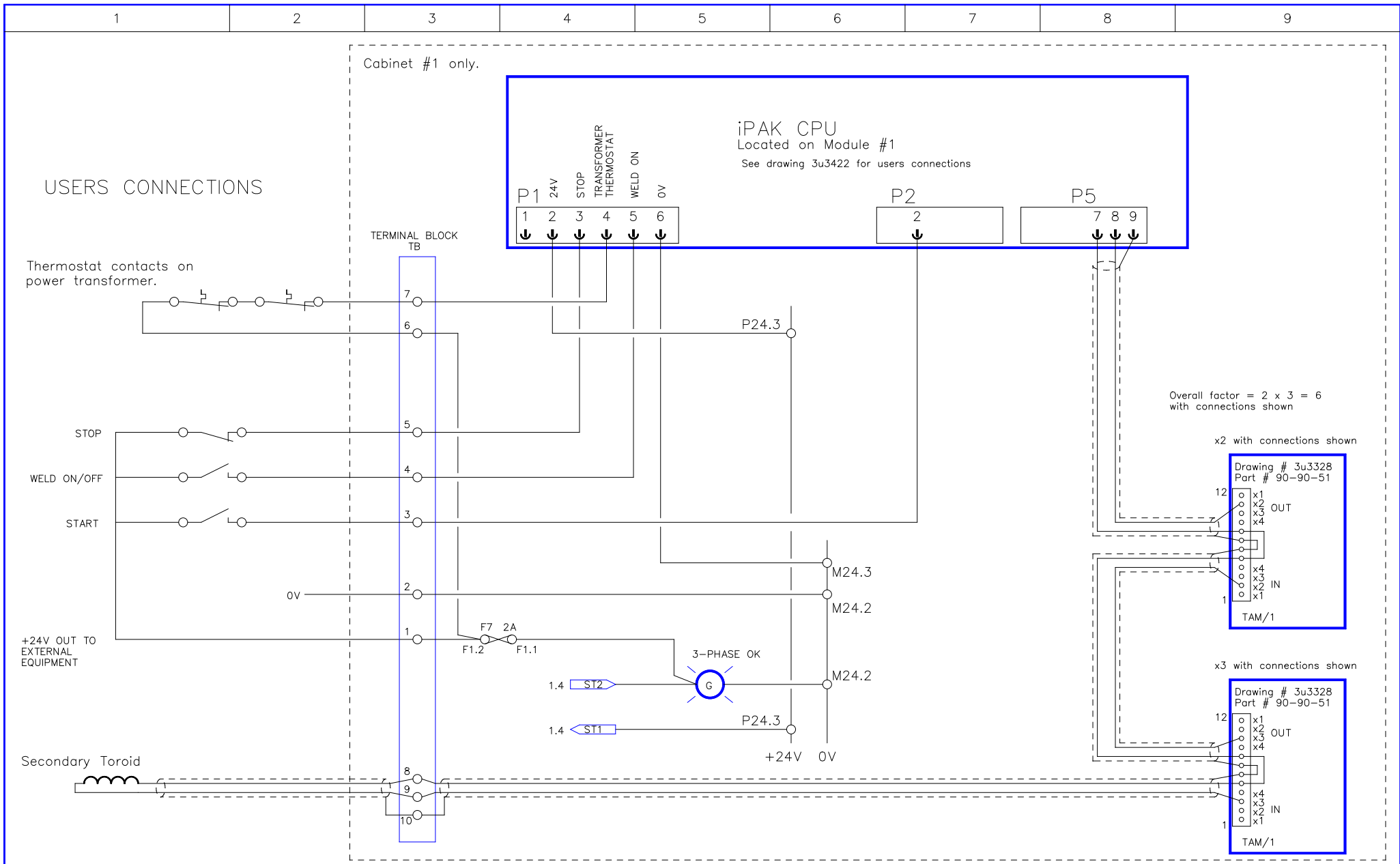


DATE:	26-10-17
DRAWN:	
CHECKED:	

BF ENTRON LTD

TITLE: iPAK LMI 4k5 CABINET WIRING

DRAWING No:	3U3629
ISSUE No:	3
SHEET No:	4 of 5



DATE:	26-10-17
DRAWN:	
CHECKED:	

BF ENTRON LTD

TITLE: iPAK LMI 4k5 CABINET WIRING

DRAWING No:	3U3629
ISSUE No:	3
SHEET No:	5 of 5