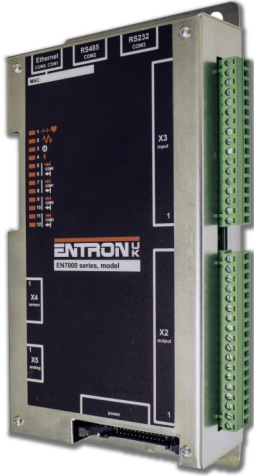


SINGLE PHASE AC constant current control for 50/60 Hz Steel Drum Seam welding applications.

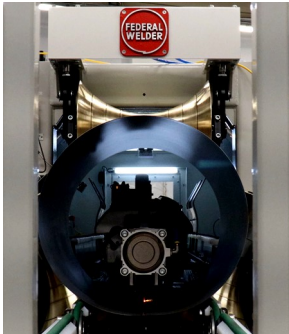
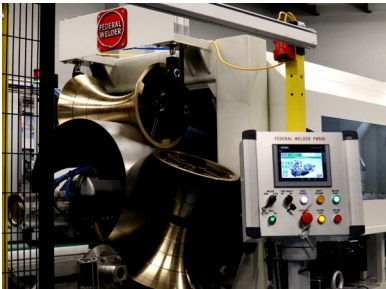
One control, two formats:

- Without touch-screen display
- With touch-screen display



EN7000v2D

- Gear plate mount / Remote mount.
- Pendant , Modbus , NetFlash programming.



Example: Drum Welding Machine.



Example: Steel Drum completed after weld.

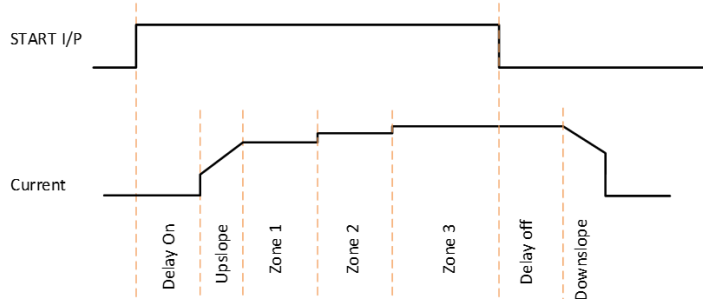
FEATURES

- 256 weld programs (schedules).
- Upslope.
- 3 selectable Weld Zones
Zone 1+ Zone 2 + Zone 3.
- Delay.
- Downslope.
- Constant Current / Phase Angle (% Heat).
- 16 Inputs/ 16 Outputs (short circuit protected).
Dedicated function.
- Secondary or Primary current regulation.
- Current Monitoring.
- Power Factor Setting.
- Data Log (Drums) 6000
- Ethernet and EtherNet/IP.
- RS232 Port.
- RS485 Port.
- Analogue inputs
- Analogue outputs.
- Feature and programming format common with iPAK2v2 D MFDC control.



EN7000v2D-TS

- Panel mount.
- Touch screen display, Pendant, Modbus, NetFlash programming



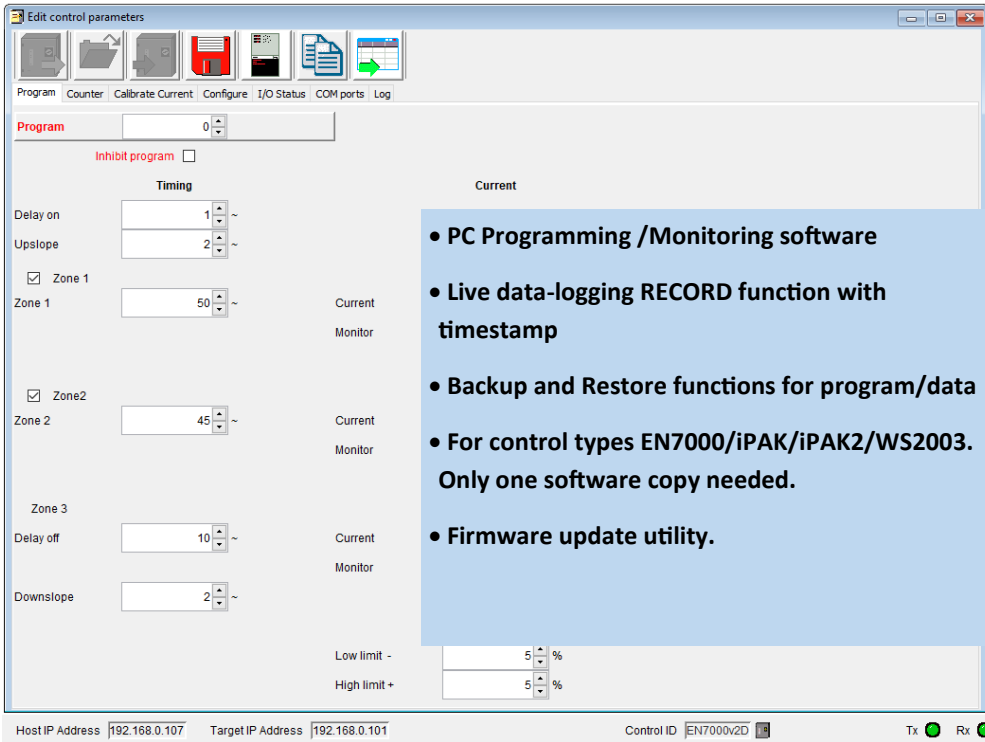
Example: Drum Welding Sequence.



Example: Complete EN7000v2D-TS system.

NetFlash PC Software for Ethernet (option)

Easy to use Networked PC. Access iPAK, iPAK2, WS2003, EN7000.



- PC Programming /Monitoring software
- Live data-logging RECORD function with timestamp
- Backup and Restore functions for program/data
- For control types EN7000/iPAK/iPAK2/WS2003. Only one software copy needed.
- Firmware update utility.



WSP3 Pendant (option)

Easy, intuitive 4 line display

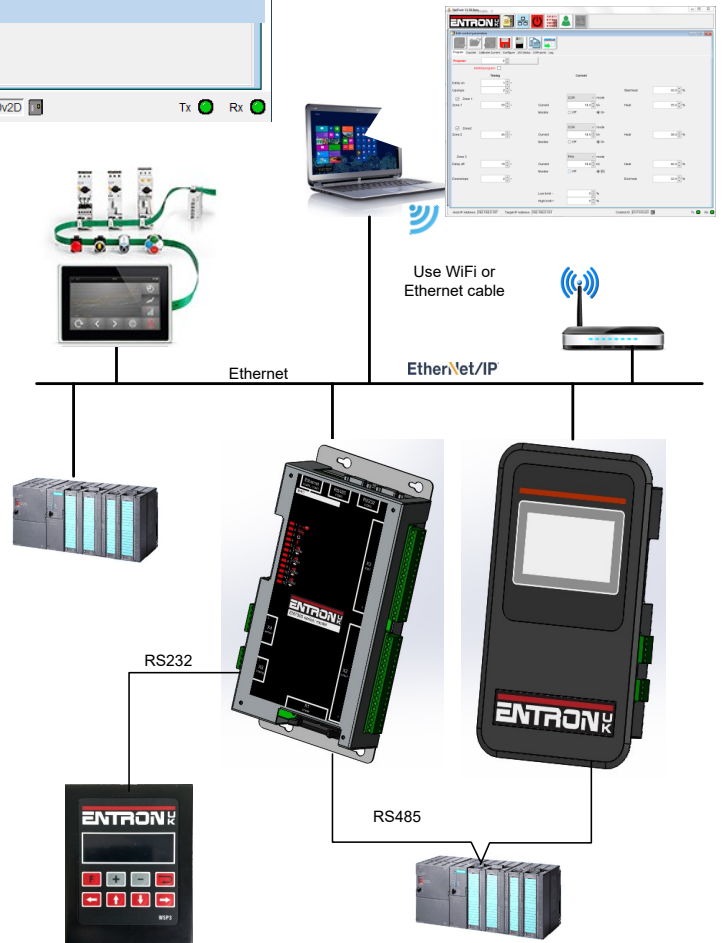
MULTIPLE COMMUNICATIONS SUPPORT :

Modbus-TCP/IP (Ethernet), Modbus-RTU (RS485), Ethernet/IP, RS232 all built-in. Other Fieldbuses supported via plug-in adapter option.

MULTIPLE CONTROL METHODS: Discrete I/O, Modbus TCP/IP (Ethernet), Modbus-RTU (RS485), EtherNet/IP.

PROGRAMMING METHODS : Pendant (RS232), HMI RS485 , HMI or PC software Ethernet TCP/IP, EtherNet/IP.

DATA-LOGGING (Spot mode): Internal data-logging up to 6000 records. Data can be recorded to hard drive through NetFlash.



BF Entron Ltd. England.
Tel: +44 (0)1384 455401

Entron Controls LLC. USA.
Tel: 864-416-0190

Entron Controls De Mexico.
Tel: +52 (844) 415 9081